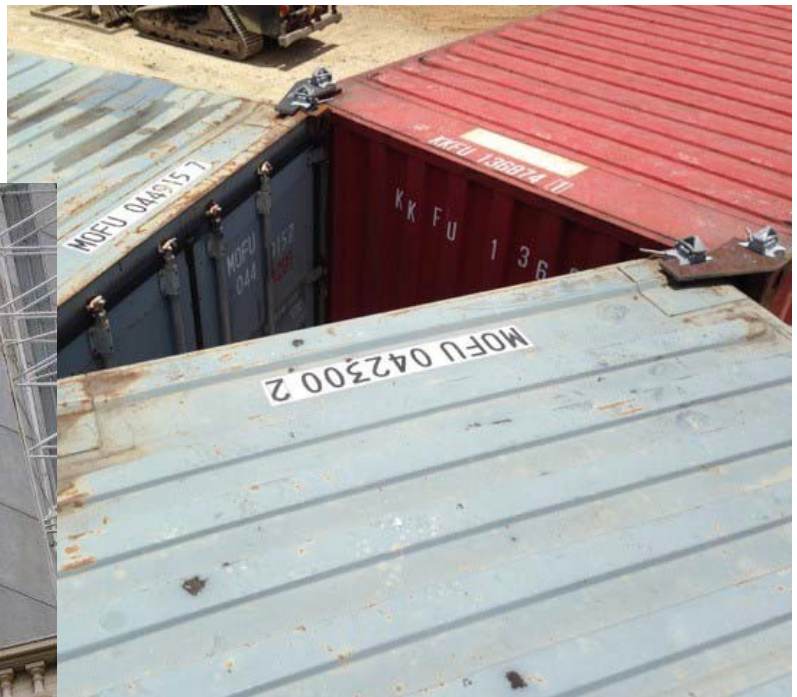
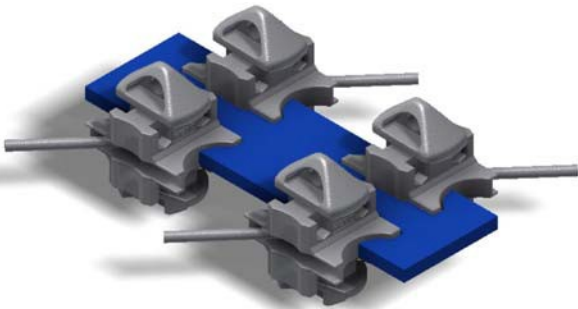


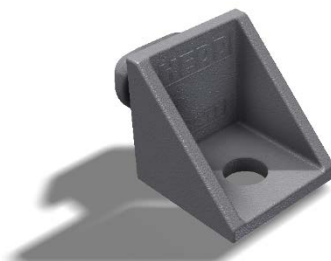
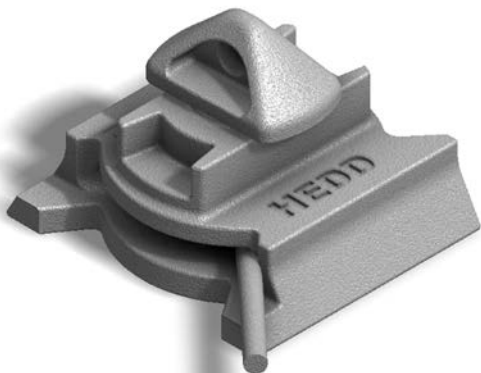
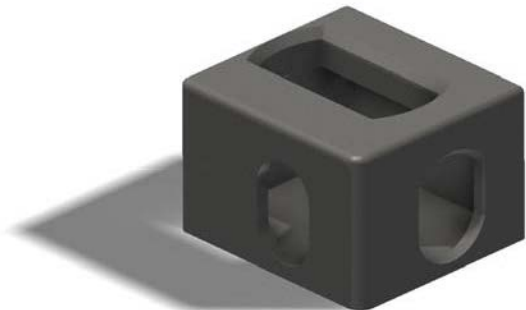
*Date: July 2021*

# **Shipping Container Connections**

## **Parts Catalogue**









# Vertical Container Connections



## **Double Ended Twist Lock**

Double Twist Locks are used to connect two containers together vertically.

Part Number: CHDTL

---



## **Semi-Automatic Twist Lock**

Semi-automatic Twist Locks can be pre-loaded and will shut automatically when a container is placed on them. These twist locks are also rated and marked for a 10T lifting capacity.

Part Number: CHSATL

---



## **Fully Automatic Twist Lock**

Fully Automatic Twist Locks have a fully automatic locking / unlocking function when loading and unloading containers.

Part Number: CHFATL

---



## **Transverse Double Ended Twist Lock**

The transverse double ended twist lock allows the stacking of containers at 90° to each other.

Part Number: CH90DTL



### **Stacking Cones**

Stacking cones provide a means to align a shipping container when stacking but do not provide vertical or lateral restraint between containers once stacked

Part Number: CHSSC

---



### **Weldable cones**

Weldable cones provide a means to locate a shipping container onto another object but do not provide vertical restraint and only limited lateral restraint

Part Number: CHWC

---

## **Horizontal Container Connections**



### **Bridge Clamp**

Bridge Clamps are used to clamp containers together horizontally.

Part Number: CHBC

---



### **Heavy Duty Bridge Clamps**

Heavy duty bridge clamps are used to clamp containers together horizontally when a higher load capability is required.

Part Number: CHBC - HD



### **Horizontal Twist Lock**

Horizontal twist locks are used to connect containers together horizontally.

Part Number: CHHTL



### **Interconnectors**

Interconnectors are used to connect containers together horizontally when a higher load capability is required

Part Number: CHINTB, CHINTT



### **Twist Lock 2 Way Joiner**

Twist lock 2 Way joiners are used to connect two double stacked containers together horizontally where you may not be able to get a Bridge Clamp in place. They are used in conjunction with the CHDTL.

Part Number: CHTL2WJ



### **Twist Lock 4 Way Joiner**

Twist lock 4 Way joiners are used to connect four double stacked containers together horizontally where you cannot get a Bridge Clamp in place. They are used in conjunction with the CHDTL.

Part Number: CHTL4WJ

# Structural Connections



## **Weldable Twist Lock**

Can be welded to any structure to allow shipping container connection.

Part Number: CHWTL

---



## **Transverse Weldable Twist Lock**

Has the locking head 90 degrees compared to the standard Weldable Twist Lock.

Part Number: CHTWTL

---



## **Boltable Twist Lock**

Can be bolted to any structure to allow shipping container connection.

Part Number: CHBTL

---



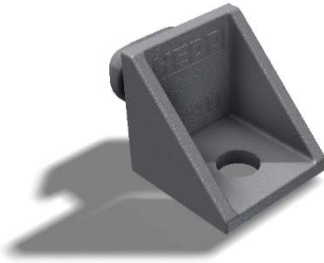
## **Raised Foundation**

Can be welded to any structure to allow shipping container connection through a double ended twist lock (CHDTL).

Part Number: CHRF



# Container Footing Connections



## **Side Twist Lock**

Allows your container to be bolted to a slab or footing without the need to move the container.

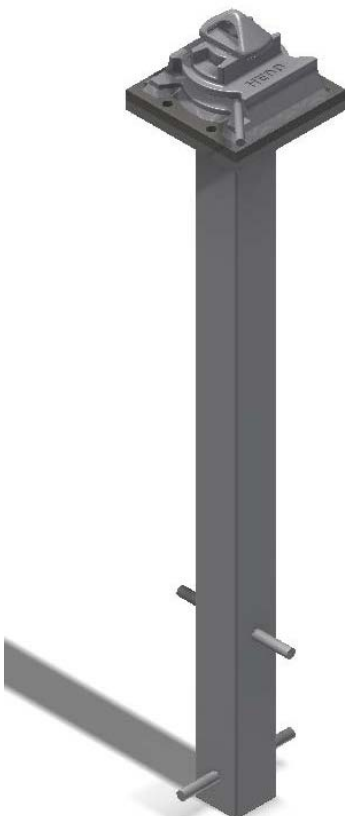
Part Number: CHSTL



## **Boltable Twist Lock**

Allows your container to be bolted to footing either using embedments or retrofitted anchor bolts.

Part Number: CHBTL



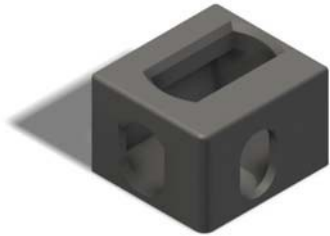
## **Twist Lock Footing Posts**

A cast in post allowing a shipping container to be connected to a concrete footing at a specified height above the ground.

Part Number: CHBTL + CHFP2



## Container Connections



### Corner Casting

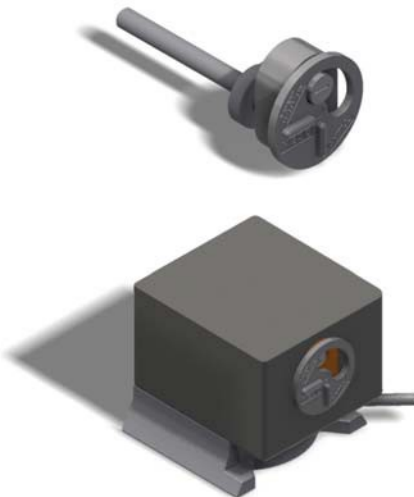
Corner Castings are the generic items used to allow connection of shipping containers to other objects.

Part Numbers:

CHCCTL, CHCCTR, CHCCBL, CHCCBR

---

## Container Security



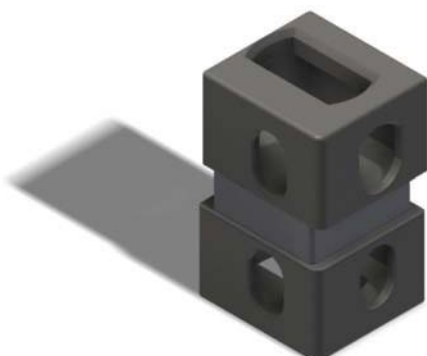
### Total Container Lock

This lock is the ultimate level of security for your shipping container, it stops anyone from stealing your container even if they have a crane, side loader or hyab. The security of your container is assured once these units are installed.

Part Number: CHTLL

---

## Container Spacing



### Container Spacer

Allows you to safely create a space between your container vertically.

Part Number: CHCS1

# Container Transport Connections



**Truck Twist Lock—Short Handle**  
Designed to be installed in a truck or trailer bed to allow connection of shipping containers.

Part Number: CHTTL-SH

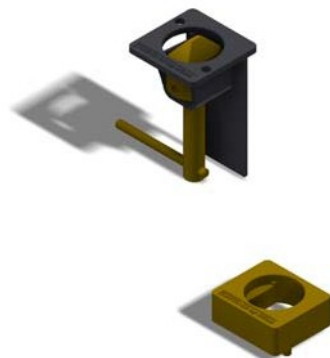
---



**Truck Twist Lock—Long Handle**  
Designed to be installed in a truck or trailer bed with higher than normal side rails or strap rails.

Part Number: CHTTL-LH

---



**Truck Twist Lock—Long Pin**  
Designed to be installed in a truck or trailer bed with raised side rails.

Part Number: CHTTL-LP

---



**Truck Twist Lock—Tilt Tray**  
Designed to be installed in tilt tray truck beds where the twist lock needs to be lowered while the container is still on the truck.

Part Number: CHTTL-TT



### **Truck Twist Lock—Tighten**

This German style type of truck twist lock is able to be tightened so eliminating any movement between the shipping container and trailer.

Part Number: CHTTL-G

---

## **Container lifting**



### **Lifting D-Rings**

Load rated for lifting purposes. Allows you to top lift using the container corner castings.

Part Number: CHCCD

---

## **Tandem Container Lifting**



### **Double Stacked Lifting Twist Lock**

Load rated for lifting purposes. Allows you to top lift double stacked empty containers.

Part Number: CHSATL



### **End to End Lifting Interconnector**

Load rated for lifting purposes. Allows you to lift horizontally joined containers.

Part Number: CHINTT, CHINTB

# Horizontal Container Movement



## **Container Corner Trolley**

Allows you to easily move a container on flat surfaces. Connects directly to the bottom corners of your container. Each has a 1 tonne WLL so giving a combined 4 tonne WLL when using one in each corner.

Part Number: CHTR1T

---



## **3 Tonne Container Castor Wheel**

Allows you to easily move a container on flat surfaces. Connects directly to the bottom corners of your container. Each has a 3 tonne WLL so giving a combined 12 tonne WLL when using one in each corner.

Part Number: CHC1-3T

---



## **5 Tonne Container Castor Wheel**

Allows you to easily move a container on flat surfaces. Connects directly to the bottom corners of your container. Each has a 5 tonne WLL so giving a combined 20 tonne WLL when using one in each corner.

Part Number: CHC1-5T



## Who are we:

We are the largest specialized supplier of shipping container connection devices to the Australian and New Zealand market.

## Where are we:

We have four outlets being Sydney, Adelaide, Perth and Auckland but can (and regularly do) deliver anywhere in the world.

## Contact us:

We are contactable via phone or e-mail, if we don't know the answer our engineering team will.

### Sydney Office

147 Prince Edward Park Rd  
Woronora NSW 2232  
Tel: 0402 566 834  
Fax: 02 9542 6072  
Email: [sales@twistlocks.com.au](mailto:sales@twistlocks.com.au)

### Perth Office

93 Orange Valley Road  
Kalamunda WA 6076  
Tel: 0408 882 156  
Email: [perth@twistlocks.com.au](mailto:perth@twistlocks.com.au)

### Adelaide Office

Tel: 0425 276 837  
Email: [adelaide@twistlocks.com.au](mailto:adelaide@twistlocks.com.au)

### New Zealand Office

11 Tarndale Grove  
Albany, Auckland 0632  
Tel: 021 36 36 10  
Email: [sales@twistlocks.co.nz](mailto:sales@twistlocks.co.nz)



To Order Call: 0402 566 834 or e-mail  
[sales@twistlocks.com.au](mailto:sales@twistlocks.com.au)

## Bulk Buys



We offer discounts when buying in bulk direct from our factory, ask for a quote today.



**Hardie Engineering Design and Development  
T/A Container Twistlocks**

PO Box 1259,  
Sutherland NSW 1499  
ABN 97 218 060 468

Phone: (02) 9542 6072    Mobile: 0402 566 834  
E-mail: [sales@twistlocks.com.au](mailto:sales@twistlocks.com.au)

Note; although we make every attempt otherwise photos and images in this brochure may vary slightly from actual product provided