

Southdale Neighborhood Plan



**Neighborhood Meeting #5
February 25, 2008**



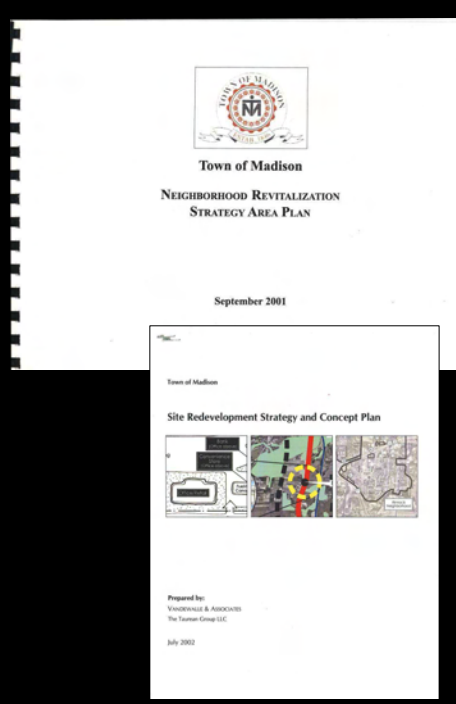
Tonight's Meeting Agenda

- 1. Welcome and Introductions**
- 2. Purposes of a Neighborhood Plan**
- 3. Review the Results of the Previous Neighborhood Meetings**
- 4. Progress on the Neighborhood Plan that has occurred since September 10, 2007**
- 5. Changes to the Draft Neighborhood Plan as a Result of Submitted Public Comments**
- 6. Explanation of the Format for the Remainder of the Evening**
- 7. Next Steps**



What are Neighborhood Plans?

- Improvements to the neighborhood for the next 10-20 years
- Reacting to current changes
- Guiding future changes so they happen on the neighborhood's terms
- Recommendations on land uses, open spaces, supporting infrastructure
- Short and long-term recommendations
- Implementation plan – who is doing what task when?



Goals for the Southdale Neighborhood

Land Use

- Incorporate sustainable practices
- Incorporate a diverse mix of activities (residences, shops, schools, workplaces, and parks)
- Integrate rather than buffer uses
- Provide opportunities and flexibility for a wide range of uses to respond to the marketplace



Goals for the Southdale Neighborhood

Housing & Economic Development

- Offer a wide spectrum of housing options
- Enhance opportunities for employment within the neighborhood
- Stimulate reinvestment and economic development



Goals for the Southdale Neighborhood

Transportation

- Improve access to goods and services
- Improve pedestrian safety through construction of sidewalks
- Create new intersections to improve access and service to underutilized parcel and promote economic development
- Promote a range of transportation options
- Create a compact neighborhood that encourages pedestrian activities without automobiles
- Incorporate a network of streets of various sizes and functions and look for alternative within and outside the neighborhood
- Utilize the existing railroad infrastructure for transit
- Reduce block lengths and increase public access to remote areas of the neighborhood

Goals for the Southdale Neighborhood

Open Space & Community Facilities

- Preserve and create open spaces, greens and parks that are accessible and convenient to all
- Create opportunities for community gardens in a centralized location available to all residents
- Create a central location for community activities and services through the identification and development of a potential Community Center



Neighborhood Meeting Process

Meeting 1, January 29, 2007

- Introduced Neighborhood Plan Initiative and Review Opportunities

Meeting 2, February 26, 2007

- Reviewed Options and Alternatives for Future Neighborhood Vision

Meeting 3, April 16, 2007

- Presented Draft Plan Recommendations

Meeting 4, September 10, 2007

- Present and Discuss Revised Draft Plan Recommendations

Meeting 5, February 25, 2008

- Discuss Revised Draft Plan Recommendations

Meeting 6, April 30, 2008

- Will Present and Discuss Revised Final Plan Recommendations



Progress on the Plan Since September 10, 2007

- City neighborhood meetings – November 14 and February 20
- Discussions regarding a location for a community center
- Individual meetings with City, Town, and The Alexander Company
- Southdale-Rimrock Neighborhood Association meetings



Neighborhood Input

Land Use

- Residents want neighborhood service - grocery store, coffee shop, etc.
- New bank and conveniences store helpful and used
- Affordability and diversity make it a great place to live
- Some like private feel of neighborhood, some don't
- Provide access to commercial goods and services - affordable and geared toward serving residents
- Offer affordable homeownership opportunities
- Preserve existing housing, don't displace current residents
- Promote businesses start-up (live/work)
- Create better job opportunities for residents within neighborhood



Neighborhood Input

Open Space & Community Gather Space (Facilities)

- Southdale Park is important – update equipment
- Community gardens are extremely valuable
- Open space & habitat preservation are important
- Create a community center
- Find a centralized location for neighborhood gatherings
- Create new community gardens, preserve existing gardens
- Establish a community center (daycare, after school programs, voting, services)
- Preserve existing open space
- Preserve and enhance Southdale Park



Neighborhood Input

Transportation (Bikes, Pedestrians, and Vehicles)

- Semi-trucks use local street
- Concern over heavy construction traffic nearby
- Rimrock / CTH MM intersection unsafe
- Sidewalks are needed
- Path at the back of Southdale Park unsafe
- Biking on-street feels safe
- Reconfigure Rimrock / Ski Lane intersection
- Improve and expand alternative modes of transportation
- Expand of existing bicycle accommodations
- Install sidewalk for safety
- Improve Clausen Street / Ski Lane (CTH MM) intersection
- Extend Lake George Road – some like, others don't
- Don't plan streets over existing housing
- Improve existing streets – some see need, others don't



City of Fitchburg Plan Commission Input

- Expand planning area to Rimrock and CTH MM intersection
- Integrate, don't buffer uses
- Improve connections – reduce isolation
- Develop a grand vision for neighborhood revitalization (i.e. urban infill & redevelopment)
- Remain affordable and look to achieve 50/50 rental to owner split

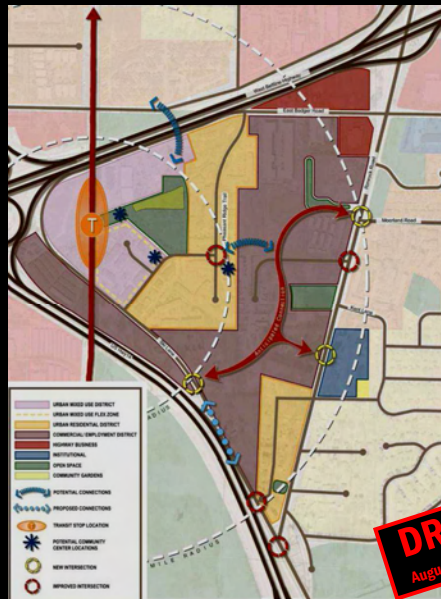


Near Term Plan



- Improvements for current residents
- Focuses on City/Town initiatives
- Accomplished over 0-10 years

Long Term Plan



- Offers Town / City Guidance for Future
- Addresses both City / Town and private initiatives
- Offers guidance for decades (30-50 years)

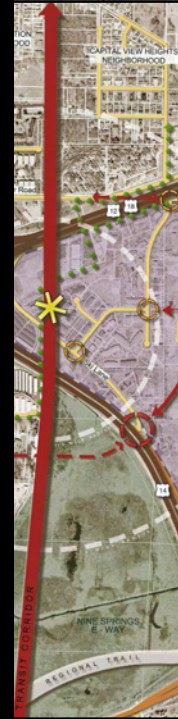
Changes to the Draft Southdale Neighborhood Plan

Future changes to the draft neighborhood plan, as a result of public comment at and since Neighborhood Meeting #4

- More information on the existing conditions – a description of the residential housing stock
- Expand the goals of the plan (link residents to jobs, provide senior housing, improve the appearance of affordable housing, create a regional approach to providing affordable housing)
- Recommend uses within the community center (day care, medical uses, after school)
- Describe role of business incubator
- Describe role of community non-profit for community garden administration
- Include Housing transition strategies
- Include better description for need for where additional residential uses can best be included in the neighborhood
- Recommend roundabout at Deer Valley-Lake George connection
- Reconsider on-street parking
- Recommend improvements to West Badger (safe walking/biking routes to South Transfer Station and Goodman Pool)
- Recommend Rimrock/Engelhart intersection improvements
- Recommend support for commuter rail station

Tonight's Small Group Discussions

- Three Tables (five 15-minute sessions)
- Discuss previous comments and responses
- Answer questions for additional information
- Provide specific comments
 - What's missing?
 - What's unclear?
- Comments written down for response at next meeting
- Fill out survey if you need more time or would prefer to comment that way



Tonight's Small Group Discussions

- Ground Rules
 - We're here to listen
 - Please respect other's opinions, all are important
 - Try to offer specific comments and statements



Tonight's Small Group Discussions

	<i>Table 1</i>	<i>Table 2</i>	<i>Table 3</i>
6:50-7:10pm	Balance and location of land uses	Location of community center	Affordable Housing
7:10-7:30pm	Business and Economic Development	Transportation/ Neighborhood Isolation	Location of community gardens
7:30-7:50pm	Business and Economic Development	Transportation/ Neighborhood Isolation	Affordable Housing
7:50-8:10pm	Balance and location of land uses	Location of community center	Location of community gardens
8:10-8:30pm	Business and Economic Development	Public Planning Process	Affordable Housing

Next Steps

- **Public Review and Comment, April 7, 2008 - April 30, 2008 (tentative)**
 - **Online: Town of Madison website and City of Fitchburg website**
 - **Hardcopy: Town of Madison Town Hall, City of Fitchburg City Hall, South Madison Library Branch Reference Section**
- **Southdale Neighborhood Meeting #6, Wednesday, April 30, 2008 (tentative)**
 - **Review the Draft Final Southdale Neighborhood Plan**
 - **Review resident comments and responses**
 - **Review schedule of Town of Madison and City of Fitchburg review and approval processes**