

World Leader

in Energy Recovery

MS
270A
SERIES

DRI™ ECO FRESH™
Energy Recovery Wheels



DRI™
Innovative Air Solutions

World Class Features

High Selectivity :

EcoFresh Energy Wheels MS 270A series use **Molecular Sieve 3Å (EcoSorb 300)** desiccant coated on aluminium substrate. This results in high latent recovery and control on cross contamination.

Aluminium Substrate :

The aluminium substrate eliminates any fire risks and results in high sensible recovery and high structural strength.

In-built purge sector eliminates cross contamination :

Purge section provides strict separation of air flows, preventing carryover of bacteria, dust and pollutants from exhaust air to supply air.

Purge section and sealing system limit cross contamination to 0.04% of the exhaust air concentration by volume.

Non-Contact Labyrinth Seal :

- No wear and tear • Effective sealing • Long life • Brush seal for wheels upto 2200 mm.

Structural Rigidity, Hardened Edges and Innovative Manufacturing Design :

- State-of-the-art winding technology and adhesives give EcoFresh rotors high structural strength.
- Wheel edges hardened as standard to suit marine coastal application needs.

Highly Polished Surface :

Vertical run-out less than 1 mm per 1000 mm resulting in extremely low leakage across the central divider seals.

Robust Spoke Structure

Highest Recovery Efficiency Ratio (RER) in the industry

Industry's Highest Recovery Performance :

- High Desiccant loading / coating.
- Equal sensible and latent recovery, thus, comparatively higher total enthalpy recovery.
- Higher performance, low pressure drops.
- Laminar airflow due to thin aluminium substrate and uniform desiccant coating.
- Superior airflow characteristics.

Wide Range & Additional Options :

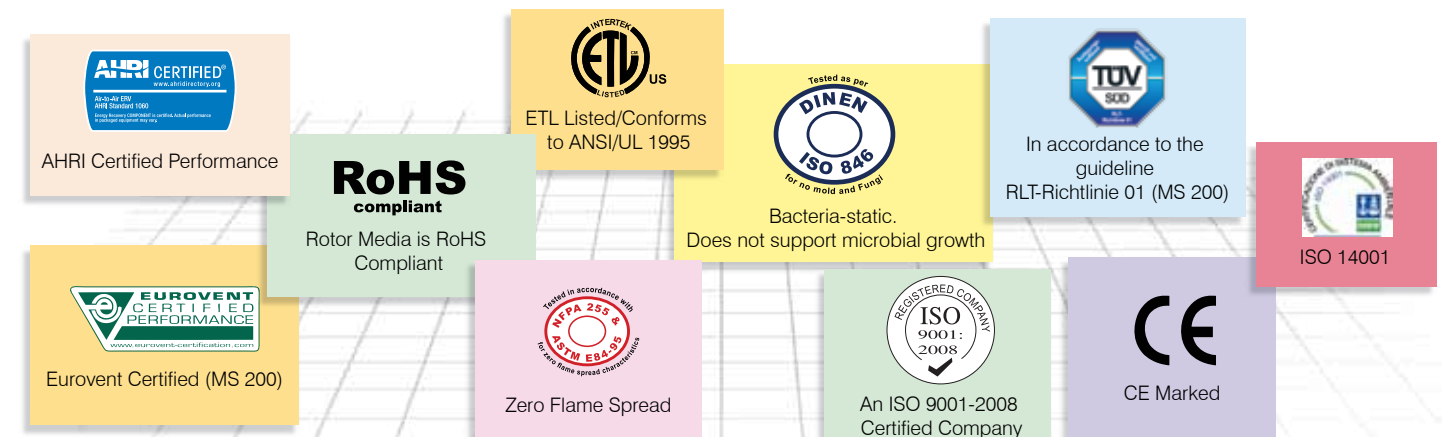
- Total energy recovery (Enthalpy) and AHRI Certified sensible wheels
- Customized flute height and rotor depth options
- Cassette as well as rotor options
- Standard and Customized options
- 500 mm to 5000 mm (dia.)
- Easy retrofit options

Segmented and Non-Segmented Options

Controls Package Available



Worldwide Recognition

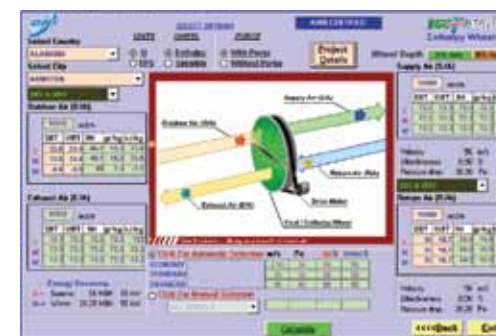


State-of-the-art Manufacturing & Test Facilities



Fully integrated Manufacturing Plant

Selection Software Available



World's largest installation base

DRI has the world's largest installation base of **3Å Molecular Sieve Coated Wheels**.

DRI Green building products help to maintain indoor Air Quality (IAQ) requirements and recover energy from exhaust air, resulting in considerable reduction in installed tonnage and utility bills.

They also assist in enhancing Indoor Air Quality (IAQ), maintaining desired temperature and humidity and increasing productivity.

Worldwide Memberships



DRI has its Airineers spread out world over

- USA
- Europe
- South Africa
- Japan
- China
- Malaysia
- Thailand
- Brazil
- Australia
- UAE
- India
- Korea
- Philippines

AHRI CERTIFIED®
www.ahridirectory.org

Air-to-Air ERV
AHRI Standard 1060

Energy Recovery COMPONENT is certified. Actual performance is packaged equipment may vary.

Velocity		M/S	1.0	1.5	2.0	2.5	3.0	3.5	4.0	4.5	5.0	Energy Recovery (200000 BTU/h) is certified. Actual performance in packaged equipment may vary.		
		FPM	200	300	400	500	600	700	800	900	1000	Height and Width "A" mm Inches	Depth in Flow Direction "B" mm Inches	Net Weight Kg. Pounds
Sensible		Efficiency in %	90	88	85	82	80	78	77	75	73			
Latent (Winter Heating)			89	86	83	80	78	76	74	72	70			
Latent (Summer Cooling)			88	85	82	79	77	75	73	71	69			
Total (Winter Heating)			90	87	84	81	79	78	76	74	72			
Total (Summer Cooling)			89	86	83	80	78	76	75	73	71			
Pressure Drop		Pa in. w.c	76 0.30	97 0.38	127 0.50	165 0.65	203 0.80	234 0.92	264 1.04	295 1.16	325 1.28			
Model Number		Air Volume												
HRW-500-MS 270A	CMH	273	409	546	682	765	955	1092	1228	1365	700	365	63	
	CFM	161	241	321	402	450	562	642	723	803	27.6	14.4	139	
HRW-600-MS 270A	CMH	416	623	831	1039	1189	1454	1662	1870	2078	800	365	71	
	CFM	245	367	489	611	700	866	978	1100	1223	31.5	14.4	156	
HRW-700-MS 270A	CMH	586	879	1172	1465	1699	2051	2345	2638	2931	850	365	79	
	CFM	345	517	690	862	1000	1207	1380	1552	1725	33.5	14.4	174	
HRW-800-MS 270A	CMH	785	1177	1569	1962	2379	2746	3139	3531	3923	950	365	90	
	CFM	462	693	924	1154	1400	1616	1847	2078	2309	37.4	14.4	198	
HRW-900-MS 270A	CMH	1011	1517	2022	2528	3059	3539	4044	4550	5055	1030	365	103	
	CFM	595	893	1190	1488	1800	2083	2380	2678	2975	40.6	14.4	227	
HRW-1000-MS 270A	CMH	1265	1898	2531	3164	3738	4429	5062	5695	6327	1130	365	113	
	CFM	745	1117	1489	1862	2200	2607	2979	3351	3724	44.5	14.4	249	
HRW-1100-MS 270A	CMH	1548	2322	3096	3869	4588	5417	6191	6965	7739	1230	365	153	
	CFM	911	1366	1822	2277	2700	3188	3643	4099	4554	48.4	14.4	337	
HRW-1200-MS 270A	CMH	1820	2730	3640	4550	5438	6371	7281	8191	9101	1330	365	169	
	CFM	1071	1607	2142	2678	3200	3749	4285	4820	5356	52.4	14.4	372	
HRW-1300-MS 270A	CMH	2105	3157	4210	5262	6287	7367	8419	9472	10524	1430	365	199	
	CFM	1239	1858	2477	3097	3700	4335	4955	5574	6193	56.3	14.4	439	
HRW-1400-MS 270A	CMH	2467	3701	4934	6168	7307	8635	9869	11103	12336	1530	365	221	
	CFM	1452	2178	2904	3630	4300	5082	5808	6534	7260	60.2	14.4	487	
HRW-1500-MS 270A	CMH	2858	4286	5715	7144	8666	10002	11430	12859	14288	1630	365	239	
	CFM	1682	2523	3363	4204	5100	5886	6727	7568	8409	64.2	14.4	527	
HRW-1600-MS 270A	CMH	3239	4859	6479	8099	9686	11338	12958	14577	16197	1730	395	276	
	CFM	1906	2860	3813	4766	5700	6672	7626	8579	9532	68.1	15.6	608	
HRW-1700-MS 270A	CMH	3683	5524	7366	9207	11045	12890	14732	16573	18415	1830	395	318	
	CFM	2167	3251	4335	5418	6500	7586	8670	9753	10837	72.0	15.6	701	
HRW-1800-MS 270A	CMH	4154	6232	8309	10386	12574	14540	16617	18695	20772	1930	395	342	
	CFM	2445	3667	4890	6112	7400	8557	9779	11002	12224	76.0	15.6	754	
HRW-1900-MS 270A	CMH	4654	6981	9307	11634	13934	16288	18615	20942	23269	2030	395	365	
	CFM	2739	4108	5477	6847	8200	9585	10955	12324	13694	79.9	15.6	804	
HRW-2000-MS 270A	CMH	5181	7771	10362	12952	15633	18133	20724	23314	25905	2130	395	392	
	CFM	3049	4574	6098	7623	9200	10672	12196	13721	15245	83.9	15.6	864	
HRW-2130-MS 270A	CMH	6024	9036	12049	15061	18182	21085	24097	27109	30122	2201	395	427	
	CFM	3545	5318	7091	8863	10700	12409	14181	15954	17727	86.7	15.6	941	
HRW-2200-MS 270A (MonoG)	CMH	6355	9532	12709	15887	19031	22241	25419	28596	31773	2201	395	427	
	CFM	3740	5610	7479	9349	11200	13089	14959	16829	18699	86.7	15.6	941	
HRW-2200-MS 270A (H.M. & SEG)	CMH	6355	9532	12709	15887	19031	22241	25419	28596	31773	2400	530	772	
	CFM	3740	5610	7479	9349	11200	13089	14959	16829	18699	94.5	20.9	1701	
HRW-2400-MS 270A (MonoG)	CMH	7608	11413	15217	19021	22940	26630	30434	34238	38042	2480	530	485	
	CFM	4478	6716	8955	11194	13500	15671	17910	20149	22388	97.6	15.6	1069	
HRW-2400-MS 270A (H.M. & SEG)	CMH	7608	11413	15217	19021	22940	26630	30434	34238	38042	2600	530	851	
	CFM	4478	6716	8955	11194	13500	15671	17910	20149	22388	102.4	20.9	1876	
HRW-2600-MS 270A	CMH	8974	13461	17948	22435	27018	31409	35896	40383	44870	2800	530	932	
	CFM	5281	7922	10562	13203	15900	18484	21125	23765	26406	110.2	20.9	2054	
HRW-2800-MS 270A	CMH	10451	15677	20902	26128	31436	36579	41805	47030	52256	3000	530	1016	
	CFM	6150	9226	12301	15376	18500	21527	24602	27677	30752	118.1	20.9	2239	
HRW-3000-MS 270A	CMH	12040	18060	24080	30100	36194	42140	48160	54180	60200	3200	530	1105	
	CFM	7086	10628	14171	17714	21300	24800	28342	31885	35428	126.0	20.9	2435	
HRW-3200-MS 270A	CMH	13741	20611	27481	34352	41291	48093	54963	61833	68704	3400	584	1453	
	CFM	8086	12130	16173	20216	24300	28302	32346	36389	40432	133.9	23.0	3202	
HRW-3400-MS 270A	CMH	15553	23330	31106	38883	46729	54436	62213	69989	77766	3600	584	1565	
	CFM	9153	13730	18306	22883	27500	32036	36612	41189	45765	141.7	23.0	3449	
HRW-3600-MS 270A	CMH	17477	26216	34954	43693	52506	61170	69909	78648	87386	3800	584	1680	
	CFM	10285	15428	20571	25713	30900	35999	41141	46284	51427	149.6	23.0	3703	
HRW-3800-MS 270A	CMH	19513	29270	39026	48783	58624	68296	78052	87809	97565	4000	584	1799	
	CFM	11483	17225	22967	28709	34500	40192	45934	51676	57417	157.5	23.0	3965	
HRW-4000-MS 270A	CMH	21661	32491	43321	54152	65081	75812	86643	97473	108303	4200	584	1922	
	CFM	12747	19121	25495	31868	38300	44616	50989	57363	63737	165.4	23.0	4236	
HRW-4200-MS 270A	CMH	23920	35880	47840	59800	71878	83720	95680	107640	119600	4400	584	2569	
	CFM	14077	21115	28154	35192	42300	49269	56308	63346	70384	173.2	23.0	5662	
HRW-4400-MS 270A	CMH	26291	39436	52582	65727	79014	92018	105164	118309	131455	4800	584	2722	
	CFM	15472	23208	30944	38681	46500	54153	61889	69625	77361	181.1	23.0	5999	
HRW-4600-MS 270A	CMH	28774	43161	57547	71934	86321	100708	115095	129482	143869	4800	584	2778	
	CFM	16933	25400	33867	42333	50800	59267	67733	76200	84667	189.0	23.0	6123	
HRW-4800-MS 270A	CMH	31368	47052	62736	78421	94138	109789	125473	141157	156841	5000	584	3038	
	CFM	18460	27690	36920	46150	55400	64611	73841	83071	92301	196.9	23.0	6696	
HRW-5000-MS 270A	CMH	34074	51112	68149	85186	102294	119260	136298	153335	170372	5200	584	3175	
	CFM	20053	30079	40106	50132	60200	70185	80211	90238	100264	204.7	23.0	6998	

(3) The above models carry a suffix (N) when intended for sale in North America, as an AHRI certified product, with 60Hz Drive Motor.

(3) The above models carry a suffix (N) when intended for sale in North America, as an AHRI certified product, with 60Hz Drive Motor.

**DESICCANT ROTORS INTERNATIONAL Pvt. Ltd.**

DRI (INDIA)
100-101, Udyog Vihar, Phase - IV,
Gurgaon - 122015, India
Phone : +91-124-4188888
Fax : +91-124-4188800
Email : dri@pahwa.com
Web : www.drirotors.com

DRI (KOREA)
202 2F D.H. Building, 174-2,
Songpa-dong, Songpa-gu,
Seoul, Korea
Phone : +82-2-4140629
Fax : +82-2-4140639
Email : drikorea@hanmail.net
Web : www.drikorea.co.kr

DRI (USA)
1145, Fuller Lane /
P.O. Box 1116, Cornville,
Arizona (AZ) 86325, USA
Phone : +(928) 639-2767
Email : mgclark@driamerica.com
Web : www.driamerica.com

DRI (UAE)
P.O. Box No. 120672,
Q3-106, SAIF-Zone,
Sharjah, UAE
Phone : +971-6-5578148
Fax : +971-6-5578149
Email : enquire@dri.ae
Web : www.drirotors.com

- | MALAYSIA
- | CHINA
- | THAILAND
- | PHILIPPINES
- | AUSTRALIA
- | BRAZIL
- | S. AFRICA

Phone	Fax
60-3-77259919	+60-3-77259957
86-21-51591555	+86-21-51591559
66-2-7463400	+66-2-746440
632-8078435-37	+632-8078435
61-8-9'2762307	+61-8-93757989
55-41-9841-3542	
27 031 2027829	

E-mail	Website
m@bryair.com.my	www.bryair.com.my
raish@bryair.com.cn	www.bryair.com.cn
iland@bryair.com.my	www.bryair.co.th
il@bryair.com.ph	www.bryair.com.ph
dermalkani@bigpond.com	www.drirotors.com
umar@bryair.com.br	www.bryair.com.br
s@topgun.co.za	www.drirotors.com

| USA | Brazil | Europe | Australia | South Africa | Philippines | UAE | Japan | India | China | Malaysia | Thailand | Korea

www.drirotors.com

-IRW 270A/2014/001/R.