

The ExtraHop Platform

REAL-TIME STREAM PROCESSING FOR ALL DATA IN MOTION

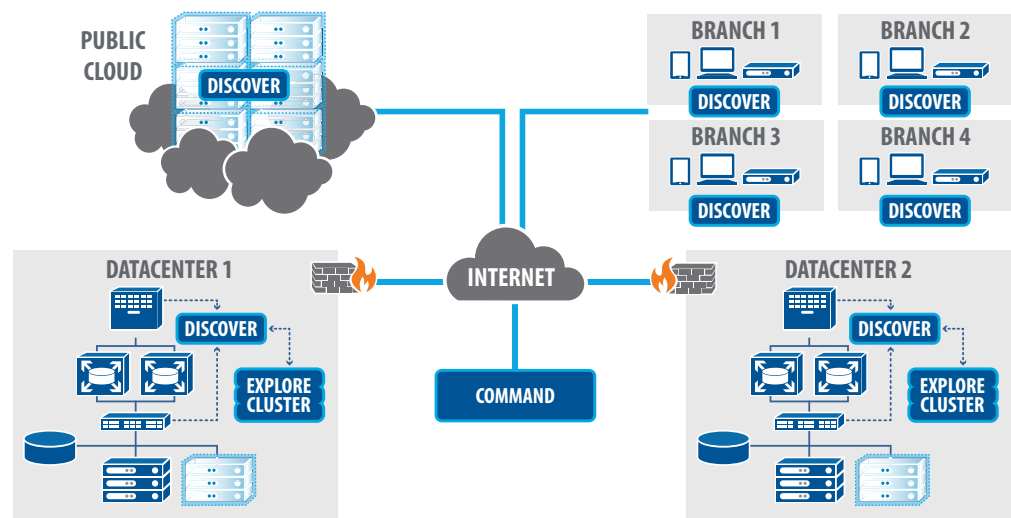


"We've achieved the 'holy grail' of IT Operations where we're not just remediating problems faster, but preventing problems from occurring in the first place."

—John Hluboky
VP of Technical Operations,
Practice Fusion

All business transacts on the network and all technology communicates on the network. The ExtraHop platform transforms unstructured packets into structured wire data, and presents that information—in real-time—for all teams to explore and visualize.

- **Proactive monitoring and remediation** – Correlate performance across all tiers of your environment, on-premises and in the cloud.
- **Optimization and continuous improvement** – Make decisions about your IT infrastructure based on data, not assumptions.
- **Pervasive security monitoring and compliance** – Detect anomalies and get alerts based on real-time observed behavior.
- **Business and operations analytics** – Extract and analyze metrics in the payload for real-time operational intelligence.



The ExtraHop Discover appliance is the linchpin of the ExtraHop platform. Feed it network traffic from a tap or port mirror, and it transforms packets into structured wire data for highly scalable, real-time IT and business analysis.

The ExtraHop Explore appliance receives transaction and flow records from the Discover appliance and indexes them for multidimensional analysis. You can search, explore, pivot, and extract insight from it at any time.

The ExtraHop Command appliance merges all your data streams from Discover appliances across datacenters, the cloud, and branch offices. You can centrally view and manage all your data in one place.

ExtraHop is used to monitor over 1 million systems and trillions of transactions every day for enterprise customers like these:



ABOUT EXTRAHOP NETWORKS

ExtraHop is the global leader in real-time wire data analytics. The ExtraHop platform analyzes all L2-L7 communications, including full bidirectional transactional payloads. This provides the correlated, cross-tier visibility essential for today's complex and dynamic IT environments.

ExtraHop Networks, Inc.
520 Pike Street, Suite 1700
Seattle, WA 98101
877-333-9872 (voice)
206-274-6393 (fax)
info@extrahop.com
www.extrahop.com

FEATURES

L2-L7-Content Analysis

Application wire protocol analysis at the transaction level across all technology tiers

Auto-Discovery

Automatic discovery, classification, and mapping of all physical and virtual devices, clients, and applications

Advanced TCP Analysis

Simulation the TCP state machines of endpoints, enabling the most-advanced TCP analysis in the industry

Enterprise Scalability

Analysis for more than 1.3 million HTTP transactions per second, with bulk decryption at 40 Gbps and 64,000 SSL handshakes per second for 2048-bit keys

Application Inspection Triggers

Simple and extensible means to rapidly define custom metrics of anything in the header or payload

Geomaps

Map visualizations to answer questions such as where are users coming from and what is their experience

Bundles

Prebuilt, extensible solution bundles support specific applications

Application Activity Maps

Automatically generated maps showing relationships and dependencies between application components

Sophisticated Alerting Engine

Built-in advanced alerting engine to support both threshold-based alerts and trend-based alerts

Rich APIs

APIs for ingesting and exporting data, and a REST API tool for easy automation and orchestration

Role-Based Dashboards

Built-in, customizable dashboards that deliver immediate value to multiple teams

Open Data Stream

Stream data to other platforms such as MongoDB, Elasticsearch, Kafka, AppDynamics, and Splunk

Universal Payload Analysis

Programmability allowing for the analysis of any custom protocol based on TCP or UDP

Metrics Explorer

Charting and visualization tool for 3,400 metrics, in addition to user-defined metrics

Visual Query Language

UI elements that control queries, including for grouping, pivoting, sorting, filtering, and time-range selection

EXTRAHOP DISCOVER APPLIANCES

	PHYSICAL	VIRTUAL	CLOUD
Throughput	Up to 40 Gbps	Up to 10 Gbps	Up to 10 Gbps
Servers/monitored	Up to 5,500	Up to 3,000	Up to 3,000
Packets per second	Up to 4 million	Up to 1 million	Up to 1 million

EXTRAHOP EXPLORE APPLIANCES

	PHYSICAL	VIRTUAL
Transactions per second (data ingestion rate, single node)	Up to 35,000	Up to 35,000 (full resources)
Storage & lookback	25 TB onboard	Extensible