



# ENJOY

A Safe and Relaxing Soak Spa Right In Your Home

# inside AMERICAN TUBS

American Tubs designs and manufactures a complete line of



Premium quality walk-in Bathtubs, that are ideal for people with limited mobility, Seniors, the disabled and people with pain such as arthritis, stress and other debilitating conditions. American Tubs inspiration behind the design of every walk in bathtub is luxury, safety and functionality. Our tubs are made of marine-grade fiberglass, triple gel coat shells, manufactured utilizing premium materials, advanced methods and adherence to strict quality guidelines to create a durable,



high gloss finish that is easy to clean. Before any Walk-in Tub leaves our factory, we perform a variety of tests and careful inspection of the frame, triple gel coat finish, overall construction, and three specific water tests. Once the bath tub has passed all quality assurance points it is signed off by a Quality Assurance Specialist carefully packaged and shipped.

*All of our tubs are made with hand laid, woven sheet, marine-grade fiberglass with a triple gel coat for shine and durability*

# Details of our TUBS

Easy and Safe Access



We offer well fit design walk-in tubs that empower those in need with the dignity and independence of taking care of your own personal hygiene needs. *Ultimate in accessibility and pure comfort.*

All of our tubs comes with the following:

- High Quality Chrome Fixtures
- Easy To Operate Drain Release
- No Leak Door Sealing System
- Slip Resistant Floor
- 17" Contoured Seating
- Safety Secondary Door Drain
- Removable Access Panels
- Safety Grab Bar
- Stainless Steel Frame
- Adjustable Height Legs
- Wall extension for 60" opening
- Optional Therapy Systems

*Customize your walk-in tub to your unique needs*

HIGHEST STANDARD  
WALK IN SOAKER TUBS  
AIR MESSAGE SYSTEMS  
HYDRO MESSAGE SYSTEMS  
DUAL MESSAGE SYSTEMS



Our Tubs include waste and overflow assembly as well as the faucet with a hand held shower head.



#### **Waste & Overflow**

Large easy grip handle that requires only a 1/4 turn to release the water, in addition the overflow set height in the tub for maximum soaking depth.



#### **Door Drain**

A critical part & UPC code require ; water that may leak around the door seal will be captured in the Secondary Drain. The excess water will then be directed to the bath drain.



#### **Easy Grip Door Lock**

Ergonomically shaped design and strategic placement allows you to lower and raise the latch with ease.



#### **Built-in Seat**

The comfort seat is 17" high. Follow ADA (American Disability Act) standard height in our bathtubs. Allows ease of getting up and sitting down. Anti slip



#### **3.5" Low Threshold**

Allows easy and safe enter and exit to the tub without discomfort



#### **Angled Grab Bar**

Providing you the ease of sitting or standing with the least amount of effort



#### **Access Panel**

Cosmetically perfect and also provides easier installation and service

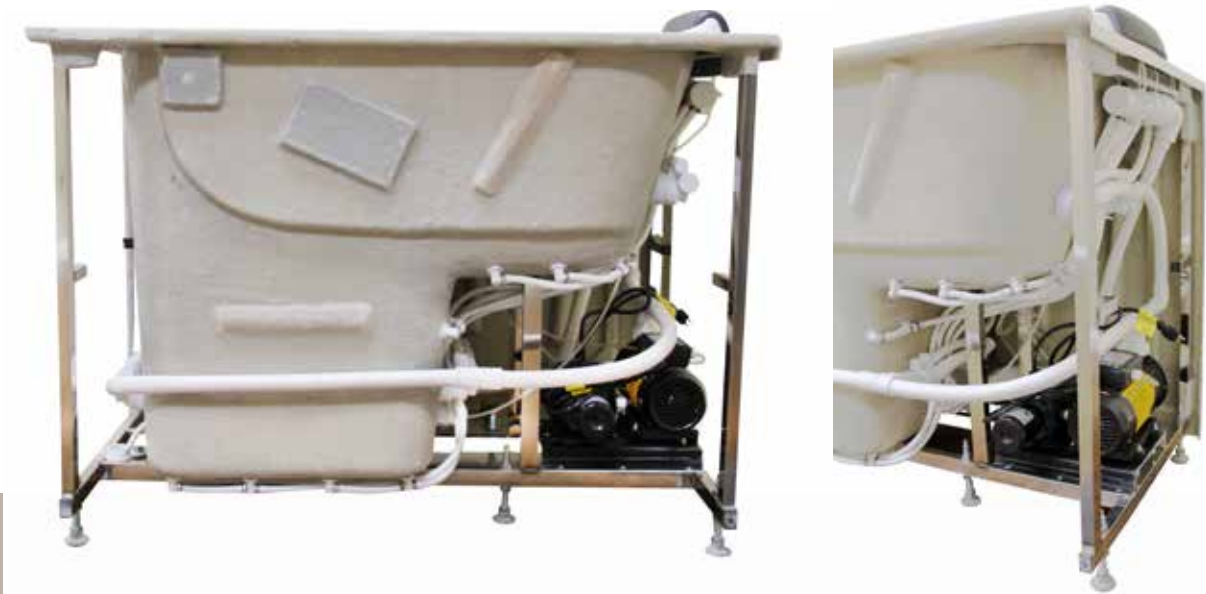


#### **Extension Panel**

Our tub has the ability to extend to a perfect fit, allowing standard and custom installation

# BUILT WITH THE HIGHEST STANDARDS

Our tubs are made with a beautiful finish and lifetime of worry-free use



## Tile Flange

Prevents water from dripping off the deck by creating a water tight seal along three sides of walls



## Motor Placement

Motor mounting platform is located under each tub and behind the access panel for ease of service and maintenance



## Adjustable legs

Adjustable leveling legs: New design 6 adjustable legs under the tub to provide stability of the tub. Fast & Easy leveling with only one hand.



## Durable Frame

Durable Frame: Our tubs use high quality stainless steel to ensure durability and long lasting durability with a Lifetime Guarantee.



## Triple Gel Coat/ Marine-Grade Fiberglass Certified Shell

Made with hand laid, woven sheet, marine-grade fiber glass with a triple gel coat for shine and durability



## True 2 inch fast flow drain

Allows to drain the tub in 80 seconds



## Door & Door seal

Intelligently designed & constructed. NO leaks ever, lifetime guarantee



## Controls

Pneumatic push control or electronic console panel with touch keypad

# Systems Choose the right fit for you and your family



## AIR MASSAGE

This system features 20 individual air jets placed around the tub. These jets send air bubbles that cling to the skin to promote circulation. An added benefit with air jets is that bath salts and oils can be used.



### SYSTEM INCLUDES

- Twenty (20) brass chrome air jets
- 110V-120V. Standard Plug-In, 1hp Air Pump (UL approval)
- Pneumatic push control in chrome

## HYDRO MASSAGE

6 or 10 Jets provide a more vigorous, focused massage as water sprays out of the jets which are strategically placed throughout your tub to hit specific areas such as your neck, shoulders, back, arms, hips, legs and feet.



### SYSTEM INCLUDES

- 6 or 10 brass chrome power water jets
- 110V-120V. Standard Plug-In, 1hp Air Pump (UL certified)
- Pneumatic push control or in chrome

## CHROMATHERAPY

It is used to balance each person's physical, spiritual, mental and emotional energy. With our LED lighting designs you can create an ideal relaxed environment.



### SYSTEM INCLUDES

- 9-LED lights strategically placed in tub
- Combination of 7 colors
- Choices of 21 blended colors to help you release stress



## AROMATHERAPY

Used to improve physical, mental and emotional well-being of our central nervous system. Just a little drop combined with warm water will rejuvenate your body and mind.



## Electronic console unit with touch keypad controls

- Hydro
- Air massage
- Ozone
- Chromathrapy
- FM Radio
- LED screen shows water temperatures
- Memory for presets



## OZONE SANITIZER

Created from the oxygen we breathe, Ozone gas is a powerful sanitizer that is known to kill disease-causing microorganisms. This Ozone gas then flows through the air system piping and out through the air jets disinfecting the system while you bath.



## IN-LINE HEATER

Designed for the pressure side of the bathtub pump and has a built in internal pressure switch to control heater operation. Important: bathtub heaters will only maintain the water temperature that is put into the tub. They will not increase the water temperature.



### SYSTEM INCLUDES

- 104° preset thermostat
- Intelligent High Limit Switch
- Heater "On" Light

# Models and specifications

## CARE 2645

The 2645 was designed with space in mind. This model fits in the smallest of spaces. Its flex door design also allows the bather to sit in comfort while closing and opening the door.

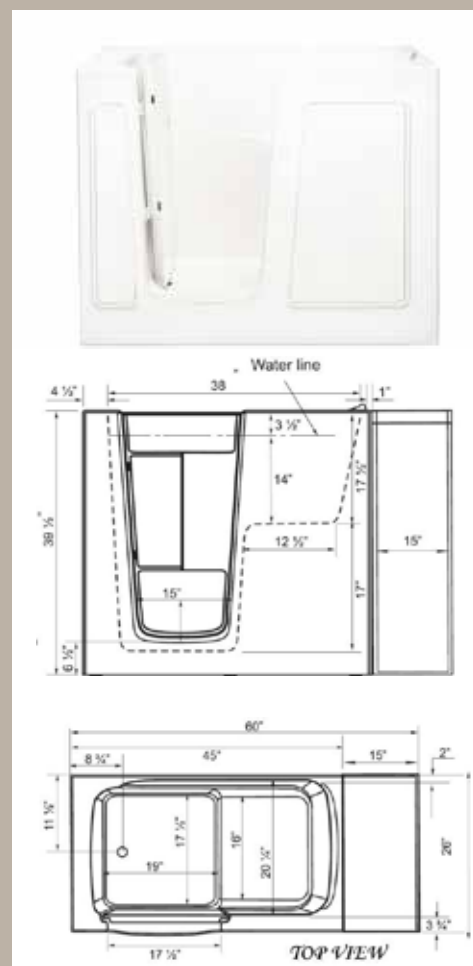
- *Hand laid, woven sheet, marine-grade fiberglass*
- *Durable triple gel coat finished*
- Excellent color uniformity
- Easy-to-clean high gloss finish
- Sure-LOCK Tub Door Latch System

### Available System / Parts

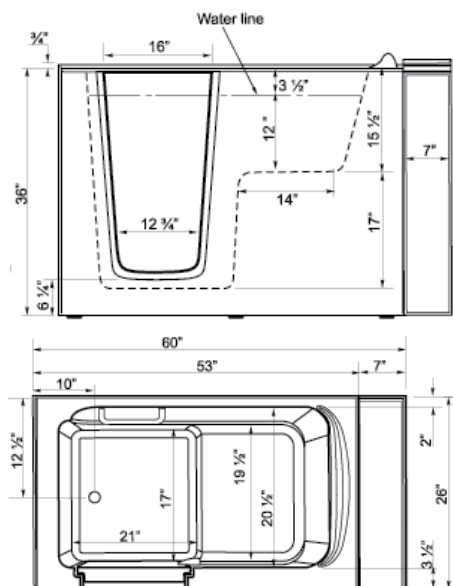
- Soaking • Hydro Massage • Air Massage • Dual Massage
- Chromatherapy system
- Aromatherapy • Faucets • In-line heater
- Headrest Pillow • Ozone sterilizer

### SPECIFICATIONS:

|   |                   |                |       |
|---|-------------------|----------------|-------|
| AVAILABLE COLORS                                  | WHITE / BISCUIT   |                |       |
| DOOR SWING  | INWARD.           |                |       |
| DOOR SIDE   | LEFT OR RIGHT     | DOOR OPENING   | 17.5" |
| SEAT (W)X(H)X(D)inch                              | 17.5X17X12.5      | SEAT CONTOURED | YES   |
| SAFETY GRAB BAR                                   | YES               |                |       |
| NON SLIP FLOOR                                    | YES               |                |       |
| FAUCET DECK                                       | YES               |                |       |
| WALL EXTENSION KIT TO FIT IN STANDARD 60" OPENING |                   |                |       |
| WATER CAPACITY                                    | 45 GAL            |                |       |
| DIMENSIONS (inch)                                 | 26(W)X45(L)X40(H) |                |       |







## CARE 2653

It is constructed of the marine-grade composites with a triple gel coat finish for beauty and durability. CARE 2653 is perfect for small bathrooms.

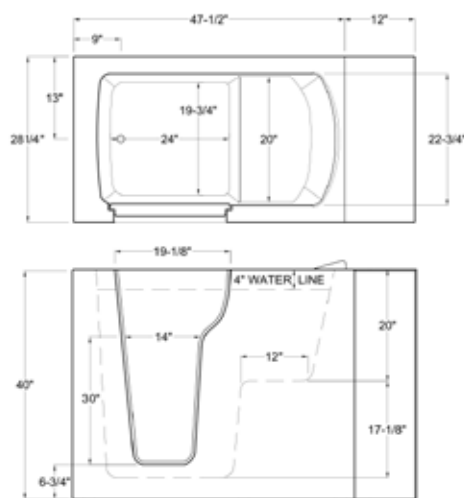
- *Hand laid, woven sheet, marine-grade fiberglass*
- *Durable triple gel coat finished*
- Heavy duty fiberglass reinforced
- Excellent color uniformity
- Easy-to-clean high gloss finish

### Available System / Parts

- Soaking • Hydro Massage • Air Massage • Dual Massage
- Chromatherapy system • Aromatherapy
- Faucets • Water In-line heater • Headrest Pillow • Ozone sterilizer

### SPECIFICATIONS:

|   |                   |                         |        |
|---|-------------------|-------------------------|--------|
| AVAILABLE COLORS                                  | WHITE / BISCUIT   |                         |        |
| DOOR SWING  | INWARD.           |                         |        |
| DOOR SIDE   | LEFT OR RIGHT     | DOOR OPENING            | 16"    |
| SEAT (W)X(H)inch                                  | 20.5X17X14        | SEAT CONTOURED          | YES    |
| SAFETY GRAB BAR                                   | YES               |                         |        |
| NON SLIP FLOOR                                    | YES               |                         |        |
| FAUCET DECK                                       | YES               |                         |        |
| WALL EXTENSION KIT TO FIT IN STANDARD 60" OPENING |                   |                         |        |
| WATER CAPACITY                                    | 45 GAL            |                         |        |
| DIMENSIONS (inch)                                 | 26(W)X53(L)X36(H) | APPROX. SHIPPING WEIGHT | 225 Lb |



## CARE 2848S

Easy-to-install. It is constructed of the marine-grade fiberglass composites with triple gel coat finish for beauty and durability.

- *Hand laid, woven sheet, marine-grade fiberglass*
- *Durable triple gel coat finished*
- Excellent color uniformity
- Easy-to-clean high gloss finish

### Available System / Parts

- Soaking • Hydro Massage • Air Massage • Dual Massage
- Chromatherapy system • Aromatherapy
- Faucets • Water In-line heater • Headrest Pillow • Ozone sterilizer

### SPECIFICATIONS:

|   |                   |                |     |
|---|-------------------|----------------|-----|
| AVAILABLE COLORS                                  | WHITE / BISCUIT   |                |     |
| DOOR SWING  | INWARD.           |                |     |
| DOOR SIDE   | LEFT OR RIGHT     | DOOR OPENING   | 21" |
| SEAT (W)X(H)X(D)inch                              | 23X17X14          | SEAT CONTOURED | YES |
| SAFETY GRAB BAR                                   | YES               |                |     |
| NON SLIP FLOOR                                    | YES               |                |     |
| FAUCET DECK                                       | YES               |                |     |
| WALL EXTENSION KIT TO FIT IN STANDARD 60" OPENING |                   |                |     |
| WATER CAPACITY                                    | 50 GAL            |                |     |
| DIMENSIONS (inch)                                 | 28(W)X48(L)X40(H) |                |     |



## CARE 2852

The bather can enjoy an extra 3.5" of soaking depth compare to a normal 36" tall walk in bathtubs. One of our most popular model that combines size and function in one package. Its spacious interior size allows for maximum bathing room while maintaining a frame that allows the tub to be maneuvered into its final position without the need for excessive remodeling.

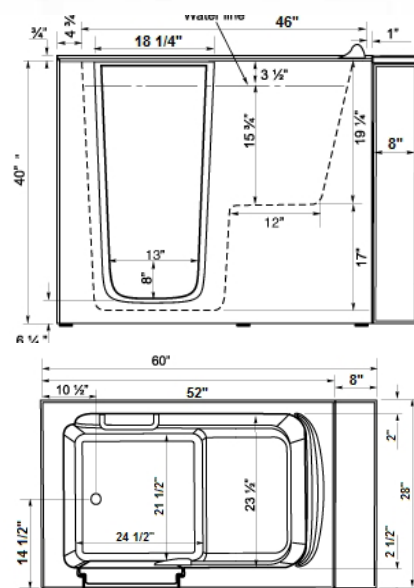
- *Hand laid, woven sheet, marine-grade fiberglass*
- *Durable triple gel coat finished*
- Heavy duty fiberglass reinforced
- Excellent color uniformity • Easy-to-clean high gloss finish

### Available System / Parts

- Soaking • Hydro Massage • Air Massage • Dual Massage
- Chromatherapy system • Aromatherapy • Faucets
- Water In-line heater • Headrest Pillow • Ozone sterilizer

### SPECIFICATIONS:

|   |                   |                |     |
|---|-------------------|----------------|-----|
| AVAILABLE COLORS                                  | WHITE / BISCUIT   |                |     |
| DOOR SWING  | INWARD.           |                |     |
| DOOR SIDE   | LEFT OR RIGHT     | DOOR OPENING   | 18" |
| SEAT (W)X(H)X(D)inch                              | 23.5X17X12        | SEAT CONTOURED | YES |
| SAFETY GRAB BAR                                   | YES               |                |     |
| NON SLIP FLOOR                                    | YES               |                |     |
| FAUCET DECK                                       | YES               |                |     |
| WALL EXTENSION KIT TO FIT IN STANDARD 60" OPENING |                   |                |     |
| WATER CAPACITY                                    | 55 GAL            |                |     |
| DIMENSIONS (inch)                                 | 28(W)X52(L)X40(H) |                |     |



## CARE 3048

Another popular model that ideal for a retrofit when width is not an issue, but length is. This walk in bath tub will fit in the space of many existing showers. The 40" height affords the bather the ability to have a deeper level of immersion in water than does the standard 36" tall walk in bath tub.

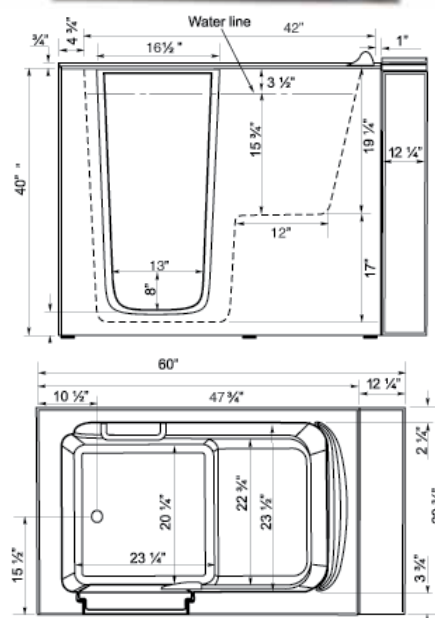
- *Hand laid, woven sheet, marine-grade fiberglass*
- *Durable triple gel coat finished*
- Excellent color uniformity • Easy-to-clean high gloss finish

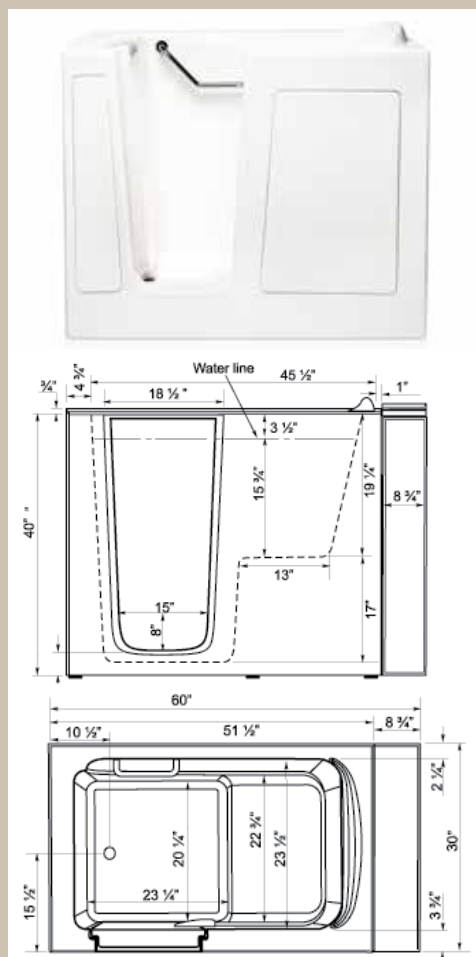
### Available System / Parts

- Soaking • Hydro Massage • Air Massage • Dual Massage
- Chromatherapy system • Aromatherapy • Faucets
- Water In-line heater • Headrest Pillow • Ozone sterilizer

### SPECIFICATIONS:

|   |                   |                |     |
|---|-------------------|----------------|-----|
| AVAILABLE COLORS                                  | WHITE / BISCUIT   |                |     |
| DOOR SWING  | INWARD.           |                |     |
| DOOR SIDE   | LEFT OR RIGHT     | DOOR OPENING   | 16" |
| SEAT (W)X(H)X(D)inch                              | 23X17X13          | SEAT CONTOURED | YES |
| SAFETY GRAB BAR                                   | YES               |                |     |
| NON SLIP FLOOR                                    | YES               |                |     |
| FAUCET DECK                                       | YES               |                |     |
| WALL EXTENSION KIT TO FIT IN STANDARD 60" OPENING |                   |                |     |
| WATER CAPACITY                                    | 57 GAL            |                |     |
| DIMENSIONS (inch)                                 | 29(W)X48(L)X39(H) |                |     |





## CARE 3052

It is constructed of the marine-grade composites with a triple gel coat finish for beauty and durability.

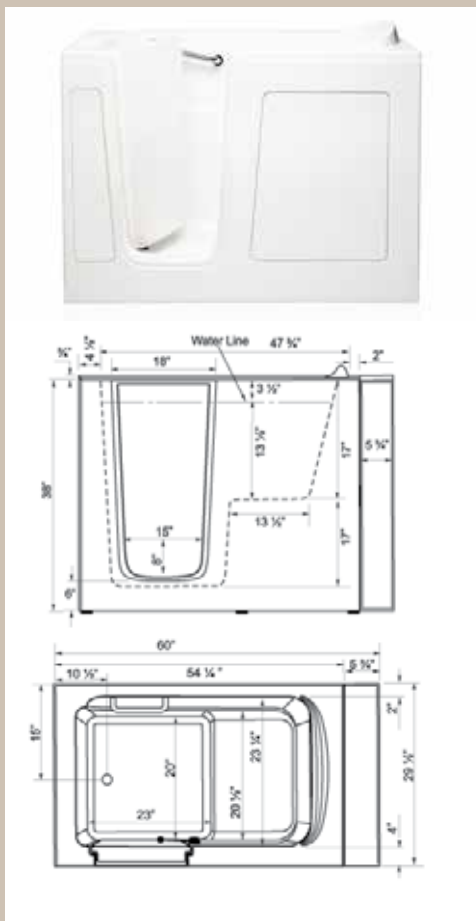
- *Hand laid, woven sheet, marine-grade fiberglass*
- *Durable triple gel coat finished*
- Excellent color uniformity
- Easy-to-clean high gloss finish

### Available System / Parts

- Soaking • Hydro Massage • Air Massage • Dual Massage
- Chromatherapy system • Aromatherapy
- Faucets • Water In-line heater • Headrest Pillow • Ozone sterilizer

### SPECIFICATIONS:

|   |                     |                |     |
|---|---------------------|----------------|-----|
| AVAILABLE COLORS                                  | WHITE / BISCUIT     |                |     |
| DOOR SWING  | INWARD.             |                |     |
| DOOR SIDE   | LEFT OR RIGHT       | DOOR OPENING   | 18" |
| SEAT (W)X(H)X(D)inch                              | 23X17X13.5          | SEAT CONTOURED | YES |
| SAFETY GRAB BAR                                   | YES                 |                |     |
| NON SLIP FLOOR                                    | YES                 |                |     |
| FAUCET DECK                                       | YES                 |                |     |
| WALL EXTENSION KIT TO FIT IN STANDARD 60" OPENING |                     |                |     |
| WATER CAPACITY                                    | 65 GAL              |                |     |
| DIMENSIONS (inch)                                 | 30(W)X51.5(L)X40(H) |                |     |



## CARE 3054

CARE 3054 is perfect for new construction and or retro fitting because of its industry standard size.

- *Hand laid, woven sheet, marine-grade fiberglass*
- *Durable triple gel coat finished*
- Excellent color uniformity
- Easy-to-clean high gloss finish

### Available System / Parts

- Soaking • Hydro Massage • Air Massage • Dual Massage
- Chromatherapy system • Aromatherapy
- Faucets • Water In-line heater • Headrest Pillow • Ozone sterilizer

### SPECIFICATIONS:

|   |                   |                |     |
|---|-------------------|----------------|-----|
| AVAILABLE COLORS                                  | WHITE / BISCUIT   |                |     |
| DOOR SWING  | INWARD.           |                |     |
| DOOR SIDE   | LEFT OR RIGHT     | DOOR OPENING   | 18" |
| SEAT (W)X(H)X(D)inch                              | 23X17X14          | SEAT CONTOURED | YES |
| SAFETY GRAB BAR                                   | YES               |                |     |
| NON SLIP FLOOR                                    | YES               |                |     |
| FAUCET DECK                                       | YES               |                |     |
| WALL EXTENSION KIT TO FIT IN STANDARD 60" OPENING |                   |                |     |
| WATER CAPACITY                                    | 57 GAL            |                |     |
| DIMENSIONS (inch)                                 | 30(W)X54(L)X38(H) |                |     |

## CARE 3060

CARE 3060 is perfect for new construction and or retro fitting because of its industry standard.

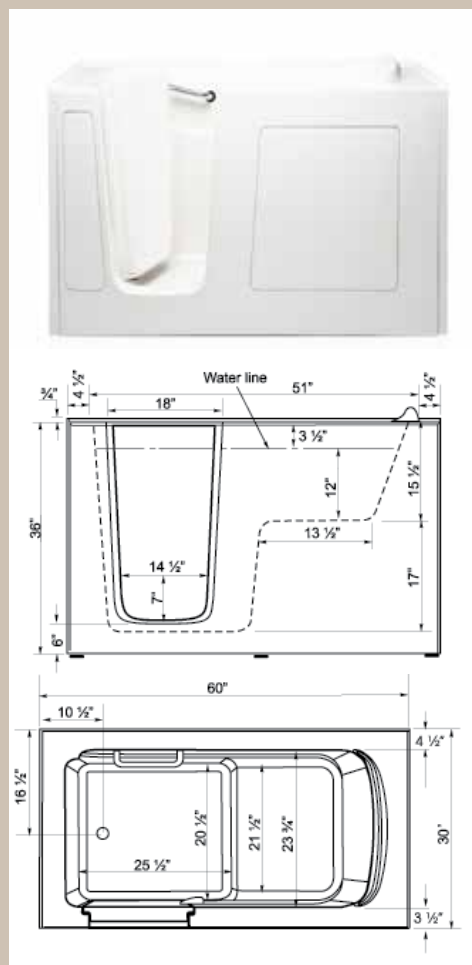
- *Hand laid, woven sheet, marine-grade fiberglass*
- *Durable triple gel coat finished*
- Excellent color uniformity
- Easy-to-clean high gloss finish

### Available System / Parts

- Soaking • Hydro Massage • Air Massage • Dual Massage
- Chromatherapy system • Aromatherapy
- Faucets • Water In-line heater • Headrest Pillow • Ozone sterilizer

SPECIFICATIONS:

|   |                   |                |     |
|---|-------------------|----------------|-----|
| AVAILABLE COLORS                                  | WHITE             |                |     |
| DOOR SWING  | INWARD.           |                |     |
| DOOR SIDE   | LEFT OR RIGHT     | DOOR OPENING   | 18" |
| SEAT (W)X(H)X(D)inch                              | 20.5X17X13.5      | SEAT CONTOURED | YES |
| SAFETY GRAB BAR                                   | YES               |                |     |
| NON SLIP FLOOR                                    | YES               |                |     |
| FAUCET DECK                                       | YES               |                |     |
| WALL EXTENSION KIT TO FIT IN STANDARD 60" OPENING |                   |                |     |
| WALL TILES FLANGES                                | ALL SIDES         |                |     |
| WATER CAPACITY                                    | 75 GAL            |                |     |
| DIMENSIONS (inch)                                 | 30(W)X60(L)X36(H) |                |     |



## CARE 3355

It is constructed of the marine-grade composites with a triple gel coat finish for beauty and durability. CARE 3355 has largest capacity.

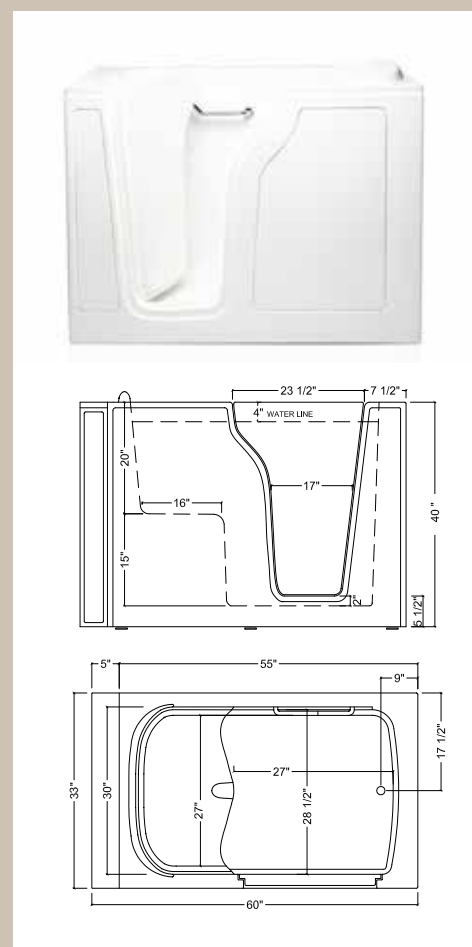
- Hand laid, woven sheet, marine-grade fiberglass
- Durable triple gel coat finished
- Excellent color uniformity
- Easy-to-clean high gloss finish

### Available System / Parts

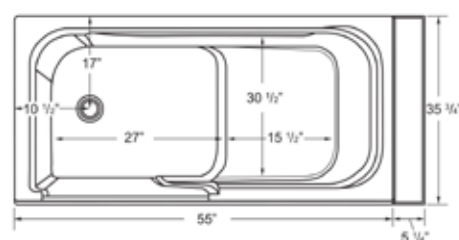
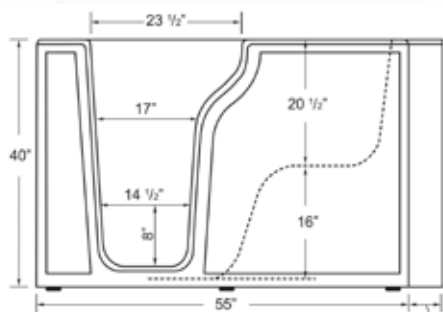
- Soaking • Hydro Massage • Air Massage • Dual Massage
- Chromatherapy system • Aromatherapy
- Faucets • Water In-line heater • Headrest Pillow • Ozone sterilizer

SPECIFICATIONS:

|   |                   |                |     |
|---|-------------------|----------------|-----|
| AVAILABLE COLORS                                  | WHITE / BISCUIT   |                |     |
| DOOR SWING  | INWARD.           |                |     |
| DOOR SIDE   | LEFT OR RIGHT     | DOOR OPENING   | 24" |
| SEAT (W)X(H)X(D)inch                              | 30.5X17X15.5      | SEAT CONTOURED | YES |
| SAFETY GRAB BAR                                   | YES               |                |     |
| NON SLIP FLOOR                                    | YES               |                |     |
| FAUCET DECK                                       | YES               |                |     |
| WALL EXTENSION KIT TO FIT IN STANDARD 60" OPENING |                   |                |     |
| WATER CAPACITY                                    | 115 GAL           |                |     |
| DIMENSIONS (inch)                                 | 33(W)X55(L)X40(H) |                |     |







## CARE 3555

This model is one of our largest capacity walk-in tubs, with a 30 1/2 inch wide seat, this walk-in tub provides plenty of room for those who require a larger seating area. The inward opening door on the CARE 3555 is 23 1/2 inches at the top, 17 1/2 inches at the curve of the door and 14 1/2 inches wide at the bottom providing one of the most spacious entries into any walk-in bath.

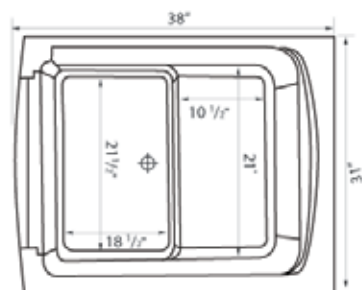
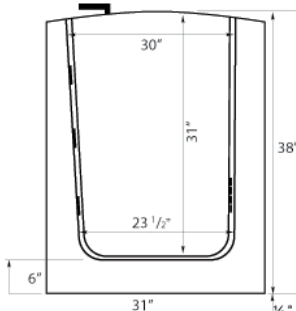
- *Hand laid, woven sheet, marine-grade fiberglass*
- *Durable triple gel coat finished*
- Excellent color uniformity • Easy-to-clean high gloss finish

### Available System / Parts

- Soaking • Hydro Massage • Air Massage • Dual Massage
- Chromatherapy system • Aromatherapy • Faucets
- Water In-line heater • Headrest Pillow • Ozone sterilizer

### SPECIFICATIONS:

|   |                   |                |     |
|---|-------------------|----------------|-----|
| AVAILABLE COLORS                                  | WHITE             |                |     |
| DOOR SWING  | INWARD.           |                |     |
| DOOR SIDE   | LEFT OR RIGHT     | DOOR OPENING   | 18" |
| SEAT (W)X(H)X(D)inch                              | 20.5X17X13.5      | SEAT CONTOURED | YES |
| SAFETY GRAB BAR                                   | YES               |                |     |
| NON SLIP FLOOR                                    | YES               |                |     |
| FAUCET DECK                                       | YES               |                |     |
| WALL EXTENSION KIT TO FIT IN STANDARD 60" OPENING |                   |                |     |
| WALL TILES FLANGES                                | ALL SIDES         |                |     |
| WATER CAPACITY                                    | 75 GAL            |                |     |
| DIMENSIONS (inch)                                 | 30(W)X60(L)X36(H) |                |     |



## LOVE 3138

Great for replacing existing shower stall or mobile home  
Free Standing / Compact size

- *Hand laid, woven sheet, marine-grade fiberglass*
- *Durable triple gel coat finished*
- Excellent color uniformity
- Easy-to-clean high gloss finish

### Available System / Parts

- Soaking • Hydro Massage • Air Massage • Dual Massage
- Chromatherapy system • Aromatherapy
- Faucets • Water In-line heater • Headrest Pillow • Ozone sterilizer

### SPECIFICATIONS:

|   |                   |                |     |
|---|-------------------|----------------|-----|
| AVAILABLE COLORS                                  | WHITE             |                |     |
| DOOR SWING  | OUTWARD.          |                |     |
| DOOR SIDE   | LEFT OR RIGHT     | DOOR OPENING   | 21" |
| SEAT (W)X(H)X(D)inch                              | 24X17X10.5        | SEAT CONTOURED | YES |
| SAFETY GRAB BAR                                   | NO                |                |     |
| NON SLIP FLOOR                                    | YES               |                |     |
| WALL EXTENSION KIT TO FIT IN STANDARD 60" OPENING |                   |                |     |
| WATER CAPACITY                                    | 45 GAL            |                |     |
| DIMENSIONS (inch)                                 | 33(W)X38(L)X38(H) |                |     |

## LOVE 3052

This tub is ideal for both: step-in or wheelchair Slide-in access  
Free Standing



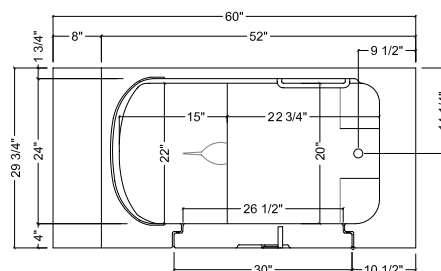
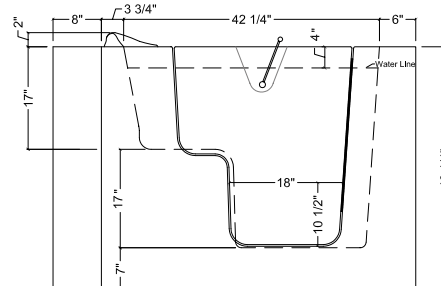
- Hand laid, woven sheet, marine-grade fiberglass
- Durable triple gel coat finished
- Excellent color uniformity
- Easy-to-clean high gloss finish

### Available System / Parts

- Soaking • Hydro Massage • Air Massage • Dual Massage
- Chromotherapy system • Aromatherapy
- Faucets • Water In-line heater • Headrest Pillow • Ozone sterilizer

### SPECIFICATIONS:

|   |                   |                |     |
|---|-------------------|----------------|-----|
| AVAILABLE COLORS                                  | WHITE / BISCUIT   |                |     |
| DOOR SWING  | OUTWARD.          |                |     |
| DOOR SIDE   | LEFT OR RIGHT     | DOOR OPENING   | 28" |
| SEAT (W)X(H)X(D)inch                              | 24X17X15.5        | SEAT CONTOURED | YES |
| SAFETY GRAB BAR                                   | YES               |                |     |
| NON SLIP FLOOR                                    | YES               |                |     |
| FAUCET DECK                                       | YES               |                |     |
| WALL EXTENSION KIT TO FIT IN STANDARD 60" OPENING |                   |                |     |
| WATER CAPACITY                                    | 70 GAL            |                |     |
| DIMENSIONS (inch)                                 | 30(W)X52(L)X40(H) |                |     |



## LOVE 3252

Ideal for both: step-in or wheelchair Slide-in access  
Free Standing *Bigger Is Better*



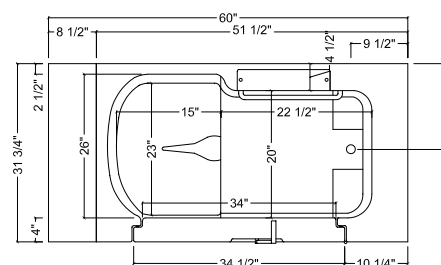
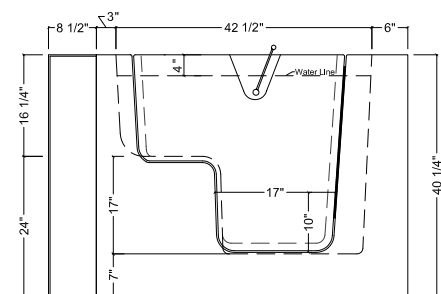
- Hand laid, woven sheet, marine-grade fiberglass
- Durable triple gel coat finished
- Excellent color uniformity
- Easy-to-clean high gloss finish

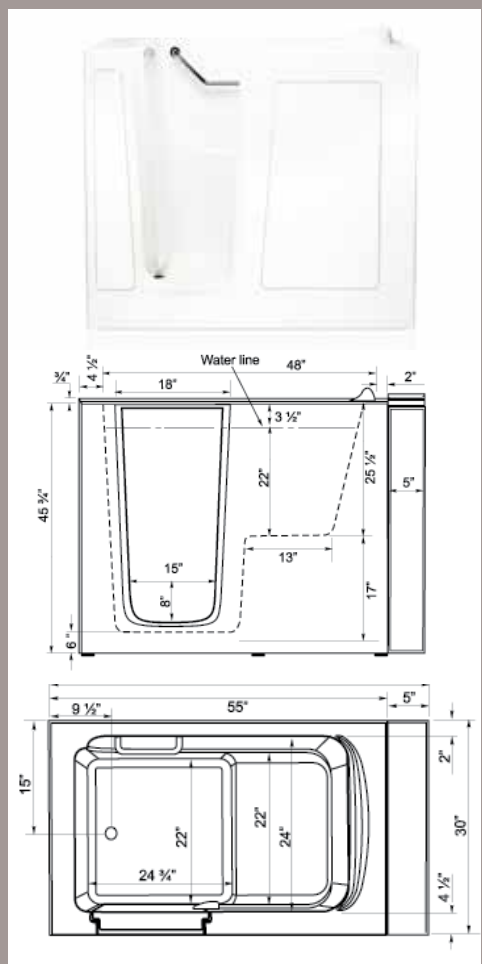
### Available System / Parts

- Soaking • Hydro Massage • Air Massage • Dual Massage
- Chromotherapy system • Aromatherapy
- Faucets • Water In-line heater • Headrest Pillow • Ozone sterilizer

### SPECIFICATIONS:

|   |                   |                |     |
|---|-------------------|----------------|-----|
| AVAILABLE COLORS                                  | WHITE / BISCUIT   |                |     |
| DOOR SWING  | OUTWARD.          |                |     |
| DOOR SIDE   | LEFT OR RIGHT     | DOOR OPENING   | 35" |
| SEAT (W)X(H)X(D)inch                              | 26X17X15.5        | SEAT CONTOURED | YES |
| SAFETY GRAB BAR                                   | YES               |                |     |
| NON SLIP FLOOR                                    | YES               |                |     |
| FAUCET DECK                                       | YES               |                |     |
| WALL EXTENSION KIT TO FIT IN STANDARD 60" OPENING |                   |                |     |
| WATER CAPACITY                                    | 75 GAL            |                |     |
| DIMENSIONS (inch)                                 | 32(W)X52(L)X40(H) |                |     |





## SAIN 3055D

This tub is ideal for those who love *DEEP SOAKING*

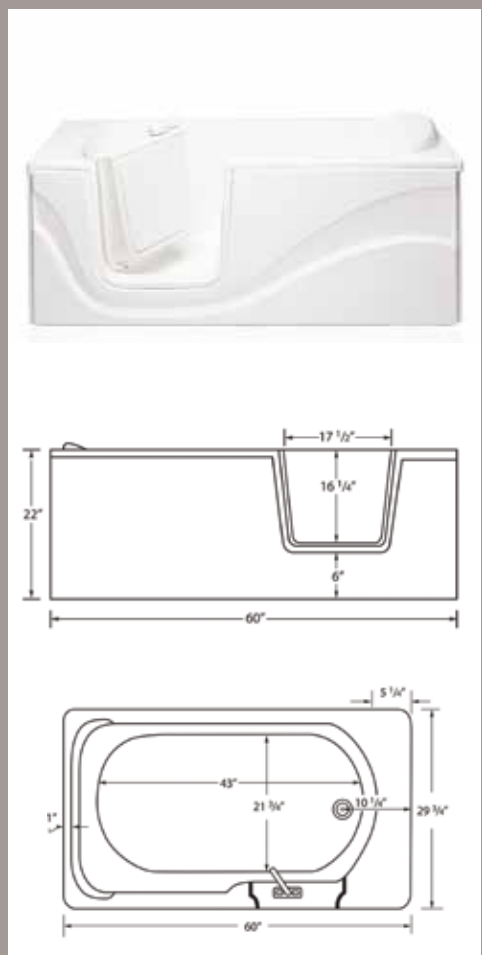
- *Hand laid, woven sheet, marine-grade fiberglass*
- *Durable triple gel coat finished*
- Excellent color uniformity
- Durable triple gel coat surface
- Easy-to-clean high gloss finish

### Available System / Parts

- Soaking • Hydro Massage • Air Massage • Dual Massage
- Chromatherapy system • Aromatherapy
- Faucets • Water In-line heater • Headrest Pillow • Ozone sterilizer

### SPECIFICATIONS:

|   |                     |                |       |
|---|---------------------|----------------|-------|
| AVAILABLE COLORS                                  | WHITE / BISCUIT     |                |       |
| DOOR SWING  | INWARD              |                |       |
| DOOR SIDE   | LEFT OR RIGHT       | DOOR OPENING   | 18.5" |
| SEAT (W)X(H)X(D)inch                              | 24.5X17X14          | SEAT CONTOURED | YES   |
| SAFETY GRAB BAR                                   | YES                 |                |       |
| NON SLIP FLOOR                                    | YES                 |                |       |
| FAUCET DECK                                       | YES                 |                |       |
| WALL EXTENSION KIT TO FIT IN STANDARD 60" OPENING |                     |                |       |
| WATER CAPACITY                                    | 105 GAL             |                |       |
| DIMENSIONS (inch)                                 | 30(W)X55(L)X46.5(H) |                |       |



## SAIN 3060LL

A tub with a door perfect for space saving is the Serpentine 3060LL Walk-In Bathtub. This stylish walk in bath affords the opportunity to soak and relax in a compact step in tub with a welded stainless steel frame, and high gloss triple gel coat finish.

- *Hand laid, woven sheet, marine-grade fiberglass*
- *Durable triple gel coat finished*
- Excellent color uniformity
- Easy-to-clean high gloss finish

### Available System / Parts

- Soaking • Hydro Massage • Air Massage • Dual Massage
- Chromatherapy system • Aromatherapy
- Faucets • Water In-line heater • Headrest Pillow • Ozone sterilizer

### SPECIFICATIONS:

|   |                   |              |       |
|---|-------------------|--------------|-------|
| AVAILABLE COLORS                                  | WHITE / BISCUIT   |              |       |
| DOOR SWING  | INWARD            |              |       |
| DOOR SIDE   | LEFT OR RIGHT     | DOOR OPENING | 18.5" |
| SEAT (W)X(H)X(D)inch                              | No Seat           |              |       |
| SAFETY GRAB BAR                                   | YES               |              |       |
| NON SLIP FLOOR                                    | YES               |              |       |
| FAUCET DECK                                       | YES               |              |       |
| WALL EXTENSION KIT TO FIT IN STANDARD 60" OPENING |                   |              |       |
| WATER CAPACITY                                    | 105 GAL           |              |       |
| DIMENSIONS (inch)                                 | 60(W)X30(L)X22(H) |              |       |



# Accessories



## 5 PCS PREMIUM FAUCET

- Thermostatic Bath Mixer
- Safety lock at desire water temperature
- Fast Fill
- Jewel Arched Solid Brass Spout
- 3/4" Valve, 3/4" Ports
- Ceramic Disc Cartridges
- Quick Connect Spout Installation
- NPS Connections
- 15 GPM (Average) @ 60 PSI



## 5 PCS ROMAN FAUCET

- Fast Fill
- Jewel Arched Solid Brass Spout
- 3/4" Valve, 3/4" Ports
- Ceramic Disc Cartridges
- Quick Connect Spout Installation
- NPS Connections
- 15 GPM (Average) @ 60 PSI



## 5 PCS FRENCH FAUCET

- Fast Fill
- Jewel Arched Solid Brass Spout
- 3/4" Valve, 3/4" Ports
- Ceramic Disc Cartridges
- Quick Connect Spout Installation
- NPS Connections
- 15 GPM (Average) @ 60 PSI



## Elite FAUCET

- Fast Fill
- Jewel Arched Solid Brass Spout
- 3/4" Valve, 3/4" Ports
- Ceramic Disc Cartridges
- Quick Connect Spout Installation
- NPS Connections
- 15 GPM (Average) @ 60 PSI



## LED LIGHTS ON FAUCET

- 9-LED lights strategically placed under the all 5 pieces faucet
- Combination of 7 colors
- Choices of 21 blended colors to help you release stress

## SLIDER BAR FOR HAND-HELD

- 16" adjustable height
- Swivel hand shower holder
- Soap tray



## 2" WASTE OVER FLOW KIT

The cable operated bath waste & overflow allows the drain to easily open and close with a simple one-eighth turn of the contoured handle.



## NECK REST PILLOW

- Comfortable and elegant look
- Two Colors: Black or White

## UNIVERSAL ADJUSTABLE HAND-HELD SHOWER HOLDER



## WALL MOUNT SAFETY GRAB BAR



## SAFETY GRAB BAR ANGLE



## SAFETY GRAB BAR STRAIGHT



17940 Ajax Circle,  
City of Industry CA 91748  
Office: (626)581-3588  
Fax: (800)943-8652  
[www.american tubs.com](http://www.american tubs.com)

