

Please find template(s) on the following tab(s) and use it for your project

Please prepare the design (liners) for printing according to the following specification:

- **Composite file** without cut marks, registration marks and side descriptions, centred on the page.
- Page format increased by 5 mm on each side for the „bleed" space.
- **Texts converted to curves, or else attach fonts used in the project (PC system).**
- Colours only as CMYK (PANTONE isn't allowed).
- Bitmaps with a minimum resolution of **300 dpi**.
- All important elements of the project (subtitles, logos, photos) should be placed within the safe area from the border.
- It is highly recommended not to place important texts on the fold line.
- **The sum of CMYK components should not exceed 250%, while in the case of dark elements - 320%.**
- The text below **10 points** should be in **100%K** (black) only, without using the other colours.
- Black text (for large degrees of writing) is always printed on the image; in the project select background from underneath (switch off over print). The black font should be printed on a white or any other, but uniform background.
- Black elements with a larger surface area should have a color composition of CMYK 40 40 0 0 100
- Font traps and bleed size are given by the Graphic designer who prepares the artwork.
- **Javro does not make any corrections** to finished projects submitted by the Client.
- Only at the customer's request corrections can be made, but it involves additional costs, understood as the costs for the composition and also extends the acceptance process.

[!] In case of not following those conditions, Javro is not responsible for quality and date of production of the finished product.

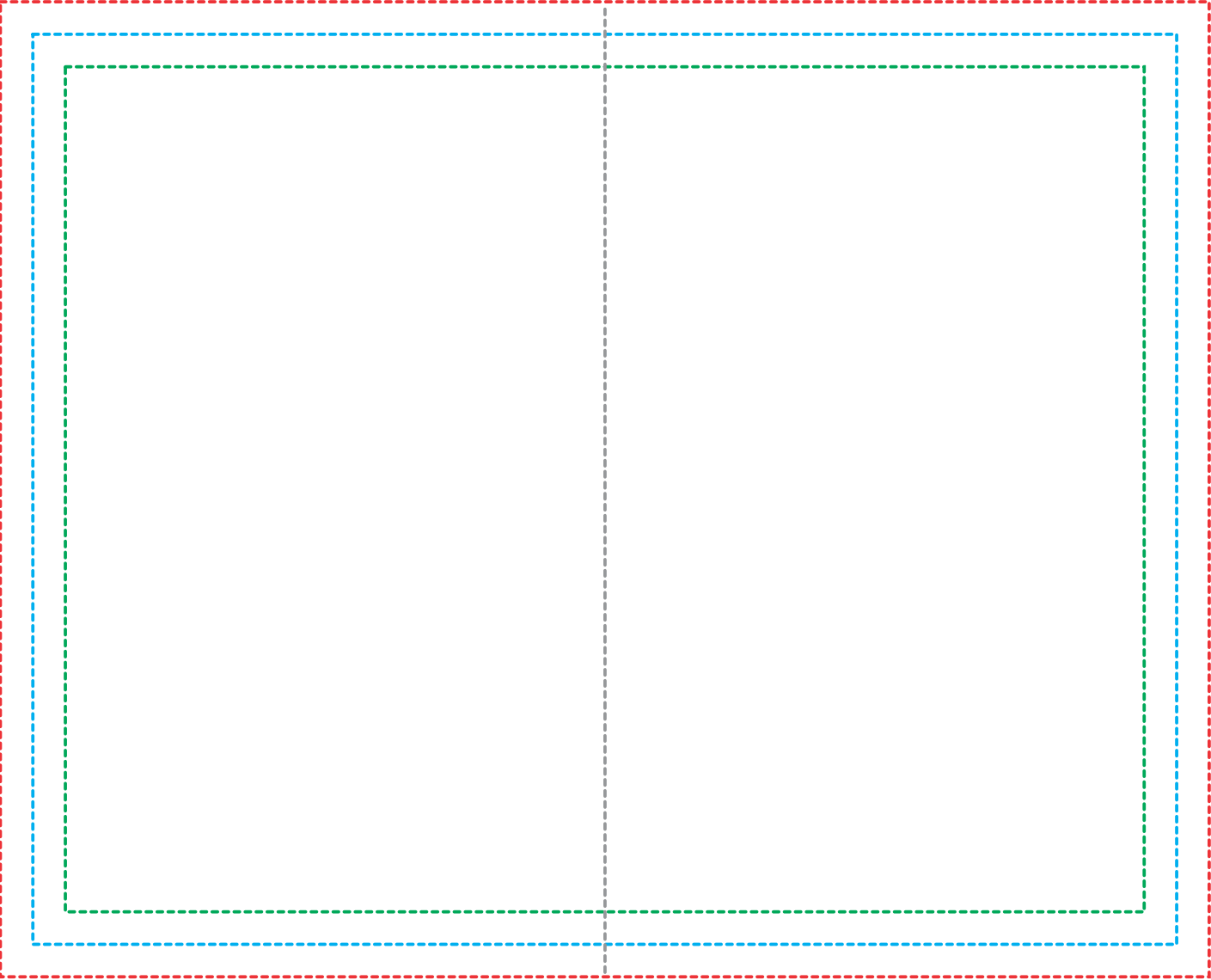
Common errors usually made in project preparation:

- Wrong format, added print characters and additional descriptions.
- Too small or no bleed area
- Important design elements too close to the wrapping, cutting, perforation or registry lines.
- Objects in lower resolution than required.
- Works or elements in the RGB or PANTONE colour system.
- The maximum sum of CMYK components exceeded.
- The number of colours used in the work does not correspond to the number of printing colours specified in the order.
- Fonts not converted to curves
- Lack of fonts (if not converted to curves).

Motley Pocket front endpaper





this template copy and paste into your artwork

- Gross dimensions 186 x 150
- Net dimensions 176 x 140
- Safety area 166 x 130
- Folding line



Motley Pocket back endpaper

this template copy and paste into your artwork

- Gross dimensions 186 x 150 
- Net dimensions 176 x 140 
- Safety area 73 x 130 
- Folding line 
- Area for glueing 93 x 140 