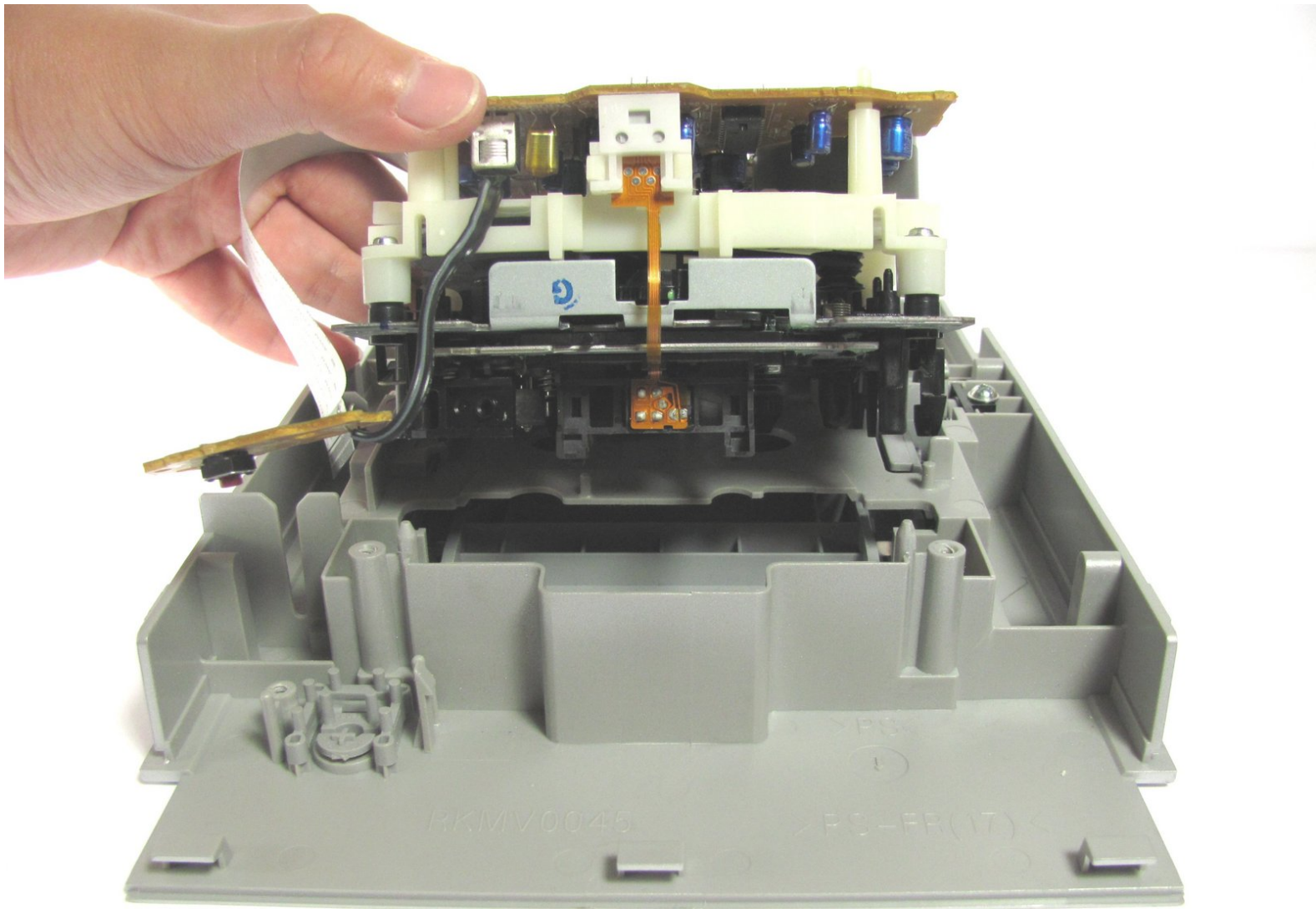




Panasonic SC-PM31 Cassette Player Replacement

Use this guide to replace a broken cassette tape player on your Panasonic SC-PM31 Stereo System.

Written By: Jessica Chao



INTRODUCTION

This replacement guide involves removing many screws. Before you start to take apart the device you will need to obtain a #2 Phillips screwdriver. Also make sure you have the replacement Panasonic SC-PM31 cassette player in hand.



TOOLS:

- [Phillips #2 Screwdriver](#) (1)



PARTS:

- [Cassette player replacement](#) (1)


Step 1 — Removing the side and back screws



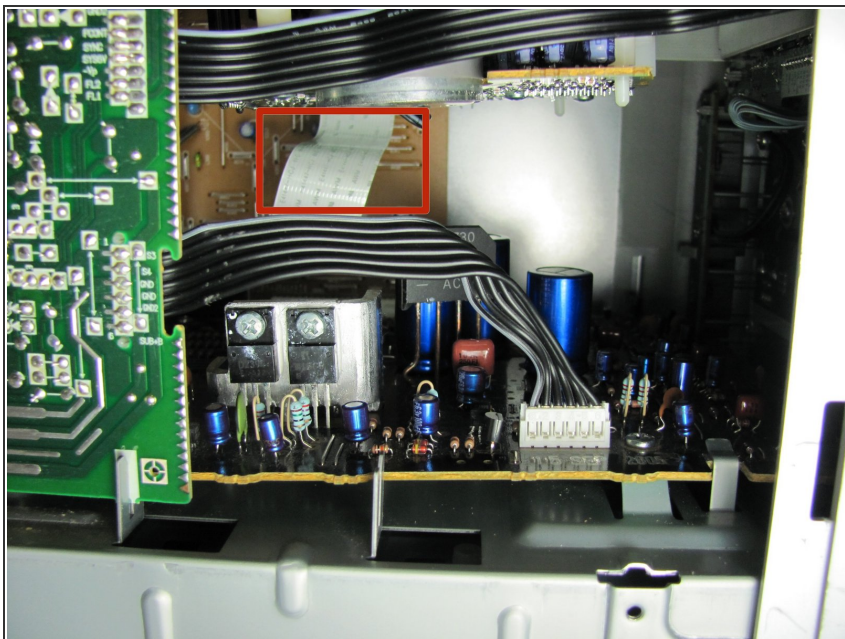
- Remove the five 9 mm #2 Phillips screws from the side panel nearest the power button.
- Repeat the process for the opposite panel.
- Remove the two 15 mm #2 Phillips screws from the back of the top panel.
- Remove the middle 10mm #2 Phillips screw from the back of the top panel.

Step 2 — Removing the panels



-  If you do not have a plastic opening tool, you can open the system using your finger. However, if you choose to use your hands, make sure to wear gloves. The panel is very sharp.
- Swing the back half of the panel slightly away from the unit. Then, starting at the top back corner, slide plastic opening tool through the created gap from back to front. The panel should pop off. Repeat the process on the opposite panel.

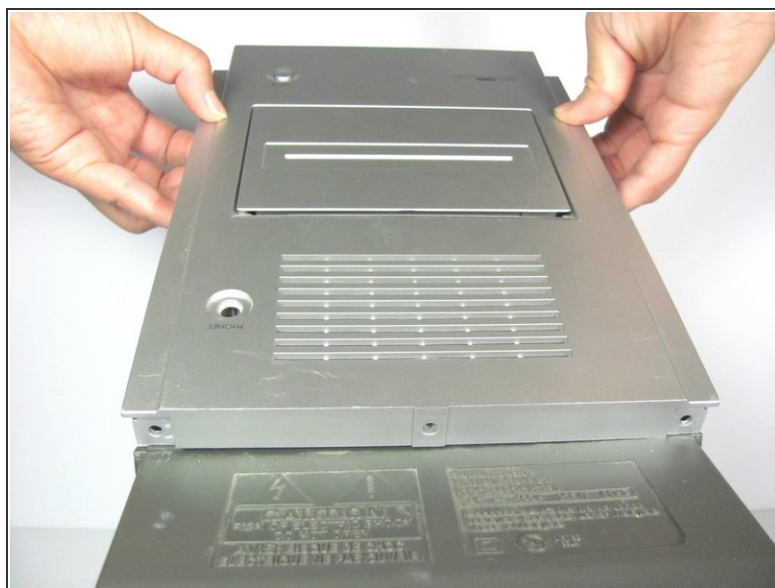
Step 3 — Removing the white ribbon wire



- Looking in through the side nearest the power button, use your fingers to pull the white ribbon connection toward you, away from the rear circuit board.

ⓘ The process will require the use of moderate force and can be eased by wiggling the ribbon during removal.

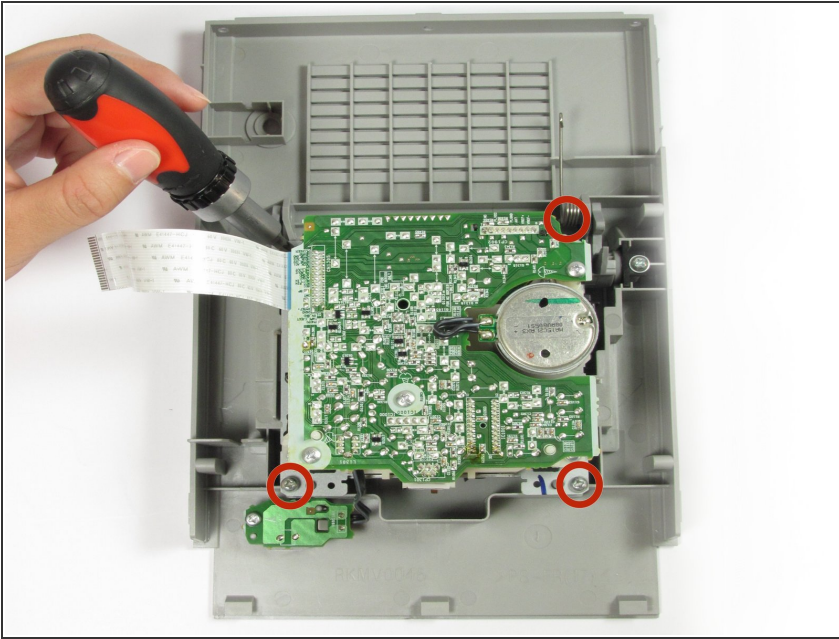
Step 4 — Removing the top panel



- Remove the top panel. You will need to slightly bend the plastic tab outwards, to undo the clasp that is attached to the top.

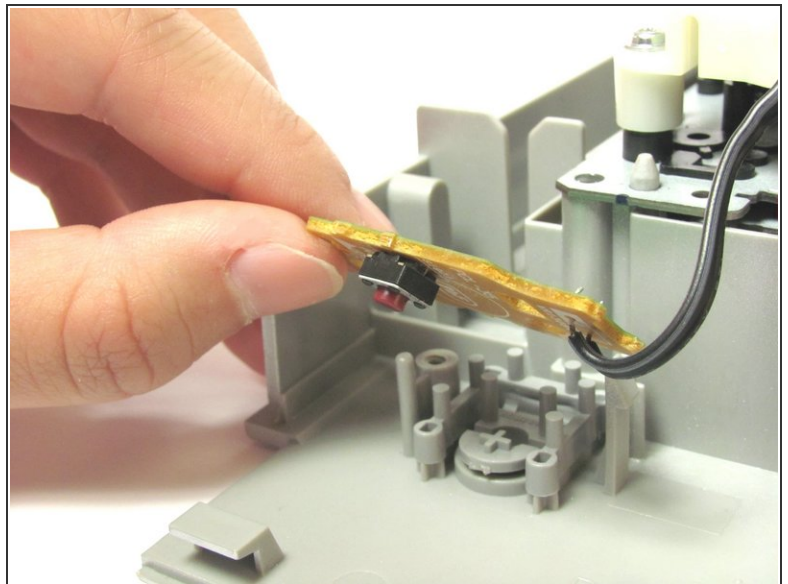
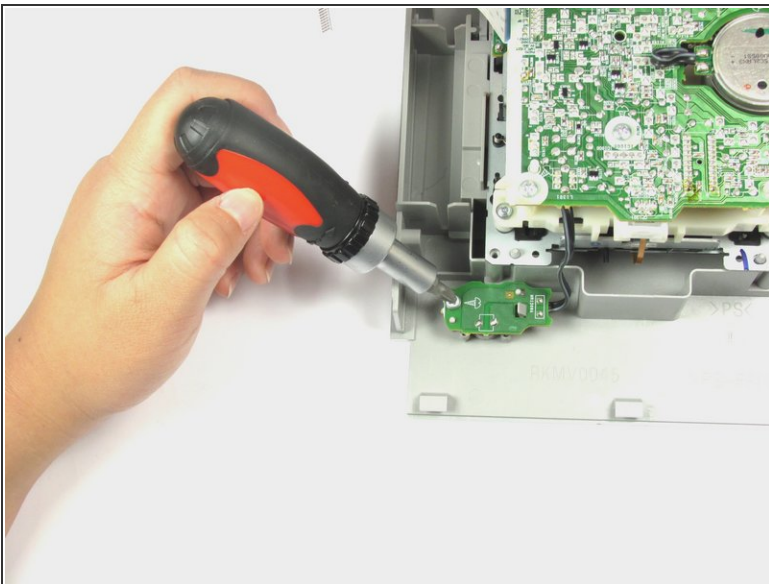
☑ When reassembling the device, reattach the white ribbon wire (Step 3) before replacing the top panel.

Step 5 — Removing the circuit board



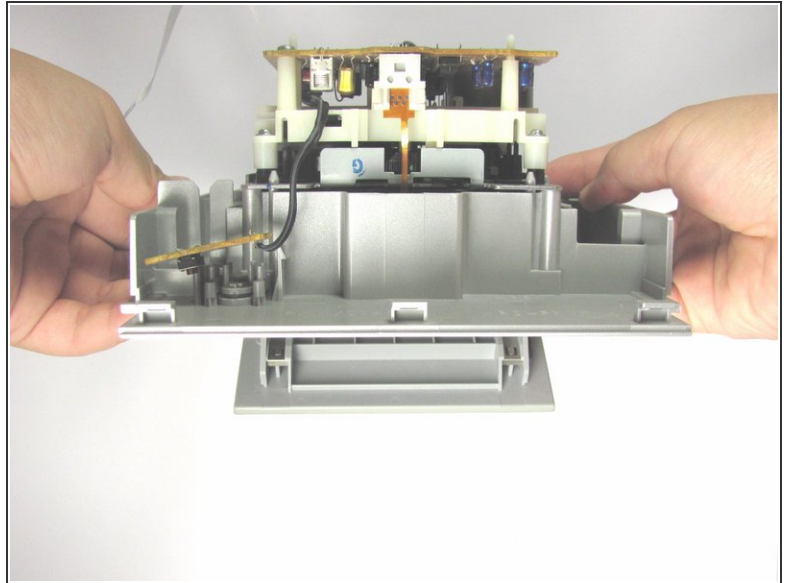
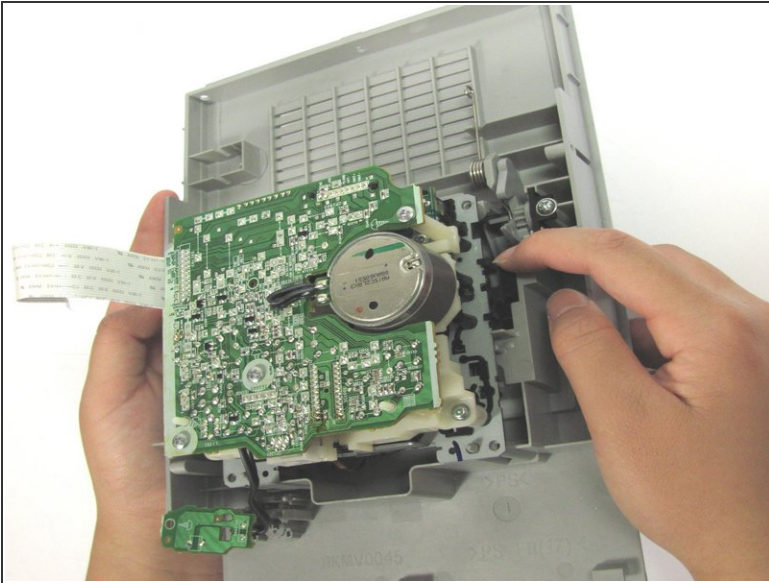
- Turn the top panel upside down.
- Remove the four Phillips #2 dome-headed screws with length 9.5mm holding the cassette assembly to the plastic exterior.

Step 6 — Removing the smaller circuit board




- Remove the Phillips #2 screw with length 9.5mm from the small circuit board.
- Lift the small circuit board from the plastic.

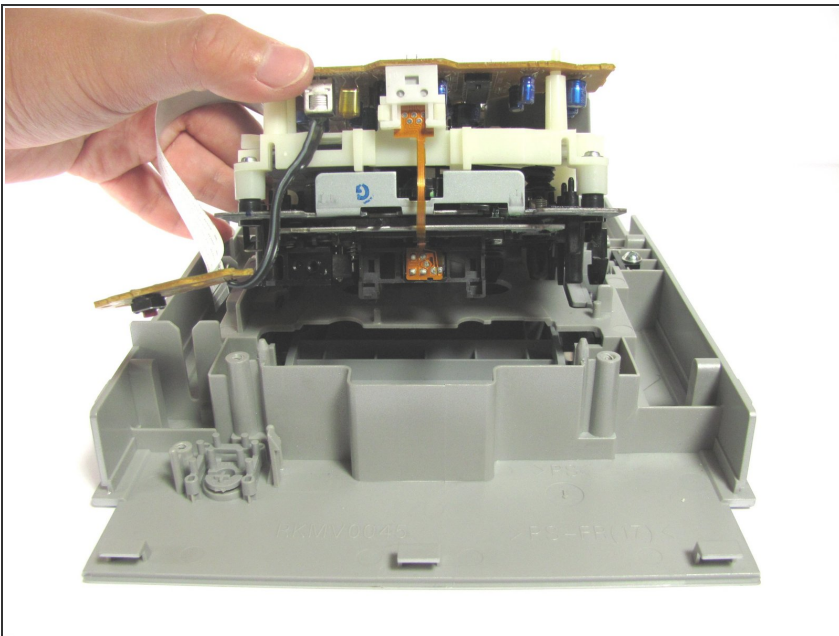
Step 7 — Removing the cassette player



- Lift the device up. With your right hand index finger, press the latch towards you to manually move the rear latch to open the cassette door.

 The cassette door will open underneath.

Step 8 — Removing the cassette player



- Carefully lift the cassette player out of the plastic casing.

To reassemble your device, follow these instructions in reverse order.