

341-353 Eddy Road | Cleveland, OH 44108

FOR SALE



WESTON

Please call us for more details!

Square Feet: 142,026

Docks: 8

Office Space: 7,329 SF

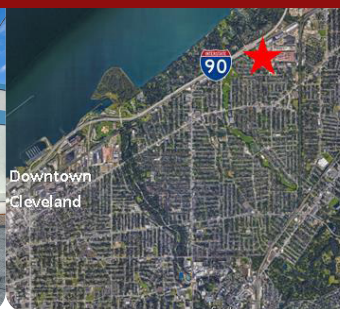
Drive Ins: 8

Clear Height: Up to 24'

Sales Price: Please Contact Us!

Power: 100-800 amp /
100-480 v / 3 phase

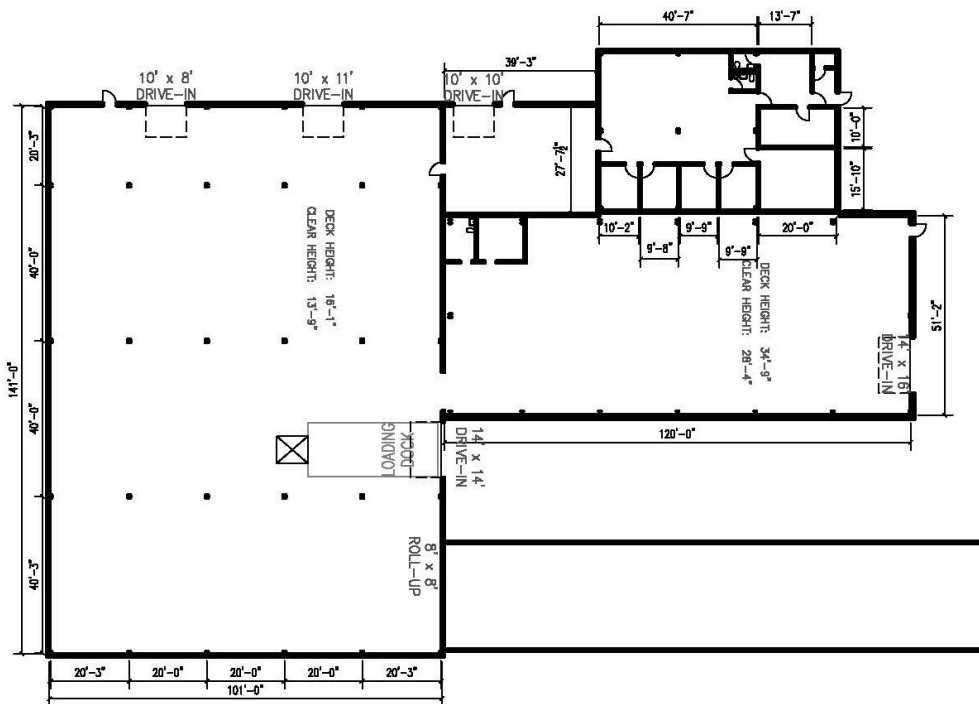
Zoning: Industrial



Weston Inc. | 4760 Richmond Road - Suite 200 - Cleveland, OH 44128 - 440.349.9000 | www.teamweston.com

Weston owns and manages a real estate portfolio of more than 21m SF in 8 states across the country. Established in 1972, our company today has offices in Cleveland, OH and Louisville, KY. We maintain strong relationships with over 750 tenants nationwide.

Floor Plan Main Building
117,456 SF - 4,752 SF Office

A portrait of a man with short, dark hair, smiling. He is wearing a dark grey suit jacket, a white dress shirt, and a blue patterned tie. The background is a blurred outdoor scene with green foliage and a building.

WESTON