

Automatic Weigh Price Labeling

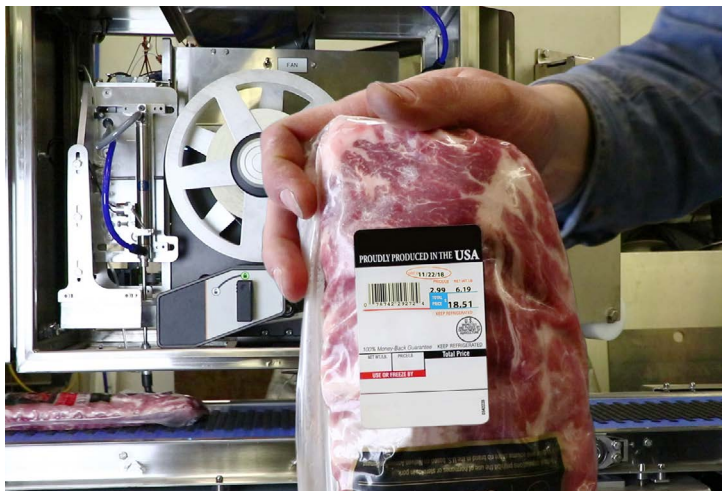
Finding nickels & dimes in better yield design

The Industry's First Washdown Labeler!

Introducing the **industry's first** washdown compatible automatic weigh price labeler! Less expensive component replacement from a washdown crew's carelessness.



Product can be labeled on top and bottom by our print and apply applicators. Large view windows and doors permit label stock status oversight and easy printer accessibility, while the labelers are easy to rotate & adjust for accurate label placement.



Labels can be adhered to difficult-to-label products, such as ribs (above). The printer can print barcodes with clarity and the applicator can consistently apply labels to flat, overwrap, or rounded surfaces.

N		20.00			1lb	
Select	Tare	Zero	Print	Units	Setup	
Tare 1	VANDE BERG SCALES Model: SDS-1700-SS SN: 1010 V: 2.3.5.0		CC No: 14-069 nmax 10,000 Class III/IIIL		NTEP Info	
20 x 0.01 lb						

Actual weight indicator incorporated into our touchscreen controllers

"[This is the] best WPL system we have!"

-Martin Don Juan, AEI Superintendent
-Fred Wines, Capital Projects Manager

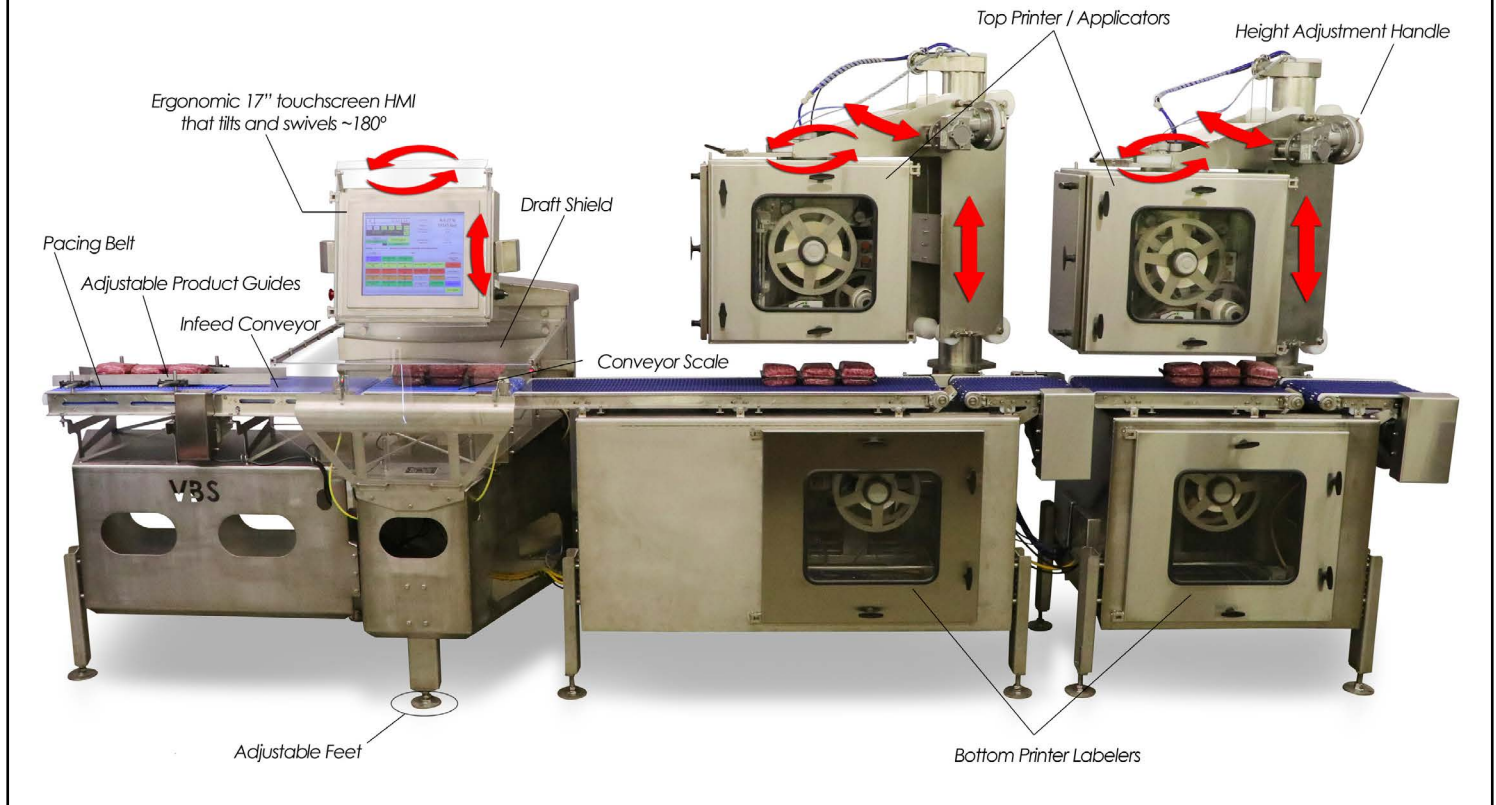
Cargill – Dodge City, KS

We have your Weigh Price Labeling solution!

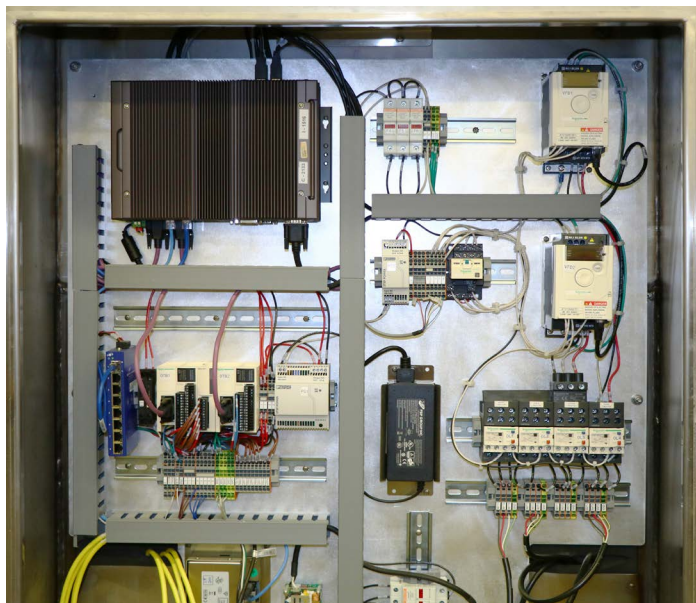
VANDE BERG
S C A L E S
Division of VBS, Inc.

Washdown-Capable Automatic Weigh Price Labeler

Two Top / Two Bottom



Features

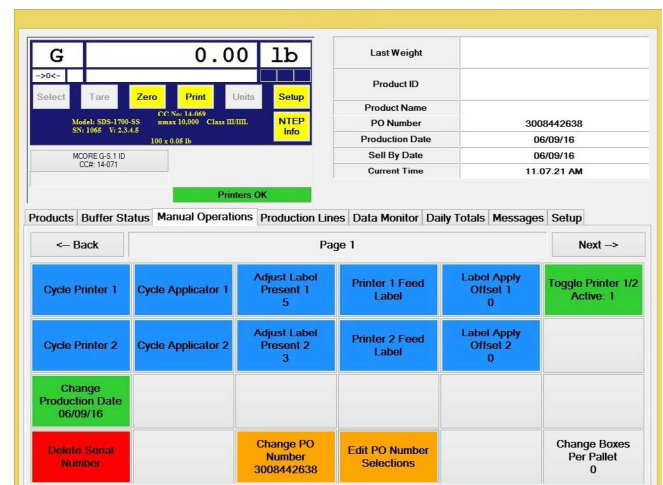


Our straightforward electronic controls make troubleshooting effortless and the obvious choice over our competitors.

Weigh Price Labeling can save a significant amount of labor in weighing and labeling packages. Packages are automatically spaced, aligned, weighed and labeled.

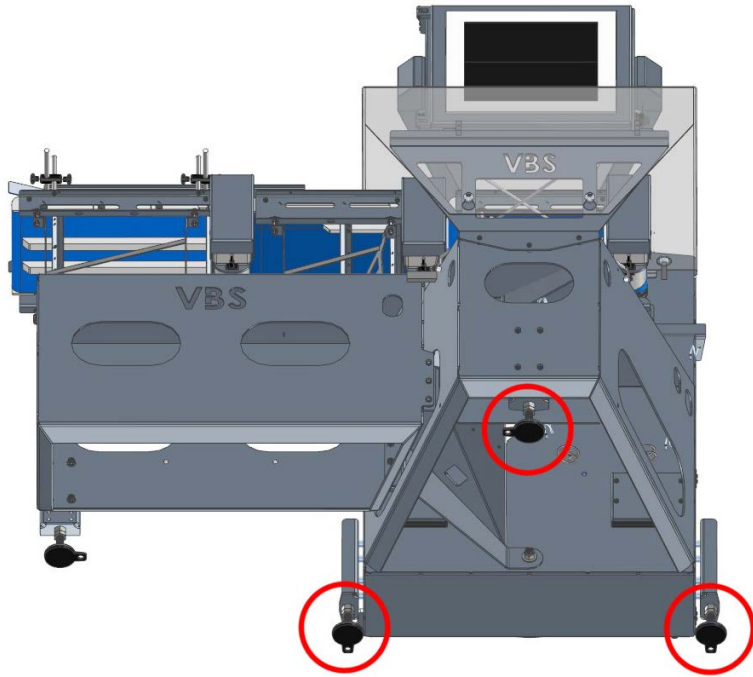
Features and Benefits

- Completely washdown compatible – an industry first
- Rigid 304 stainless steel construction
- Achieves minimal product give-away
- Lower operating cost than most existing weigh price labelers on the market
- Industry standard speeds and capacities
- Built from easily available standard components
- Easy product setup with 17-inch touchscreen HMI
- Low cost of ownership



Intuitive HMI touchscreen allows for minimal training and easy operation.

Innovative Design Features

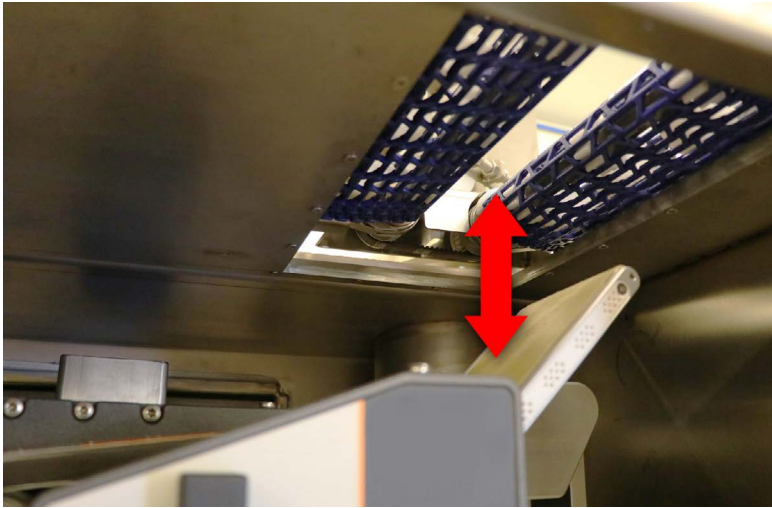


(Underside View) Our intentional 3-point design permits a very stable equipment base allowing for the most accurate in motion weights.

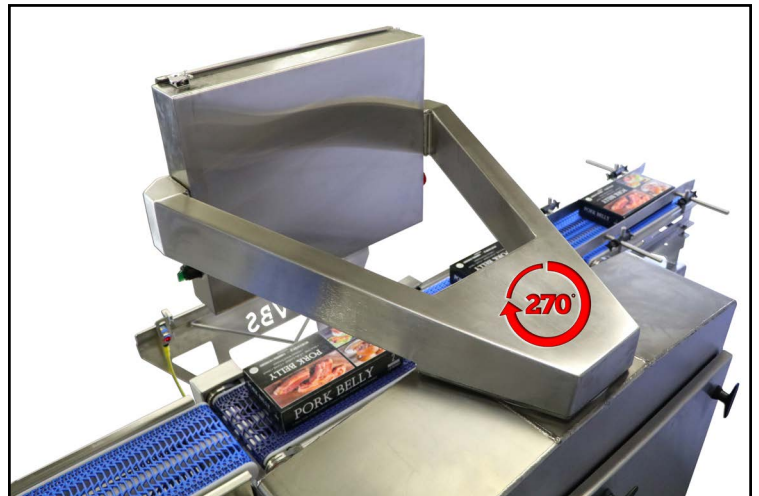


The majority of our weigh price labeling systems are outfitted with an applicator that applies labels with high speed and precision to the base and/or top of packages.

Large doors permit easy access to service to the printer components as well as easily replaceable label stock. Additionally, changing label stock does not require special tools.



Bottom labeler raises and lowers pneumatically to store for washdown.



The controller swing arm can be easily adjusted side-to-side or tilted up/down to an ergonomic position to accommodate virtually anyone.



Washdown cover for top applicator.



Optional Features



This top-only labeler utilizes an open base, with an optional pre-label push reject/air knife and barcode verification scanner.



Scan this 2D barcode to see a short video on breaking a 2x4 over our WPL



Scan this 2D barcode to see our video on weigh-price labelers



Additional Features and Benefits

- Can be integrated into a production line or used as a stand-alone machine
- Easily setup hotkeys for common products (up to 200 are possible)
- Remote troubleshooting via Ethernet

WPL Specifications

- Construction: Heavy-gauge 3/16" 304 Stainless Steel Plate
- Interface: 17-inch HMI Color Touchscreen
- Controller: Embedded OS
- Label Preview: WYSIWYG editor
- Data Export: Configurable (i.e. - SQL, .xls, .csv)
- Communication: Ethernet TCP/IP, RS-232, RS-485/RS-422

Look up our YouTube channel
youtube.com/vbsmarketing
or scan this code:



ETHERNET



USB



SERIAL

VANDE BERG S C A L E S

Division of VBS, Inc.

770 7th St NW • Sioux Center, IA 51250
Fax 712.722.0900 • 712.722.1181
info@vbssys.com • www.vbssys.com

071420.09

No parts pricing sucker punches!



We use standard, industry-available components that are often easily attainable from multiple vendors, in the design and construction of our equipment assuring our customer economical, simplified, fast and efficient maintainability.