

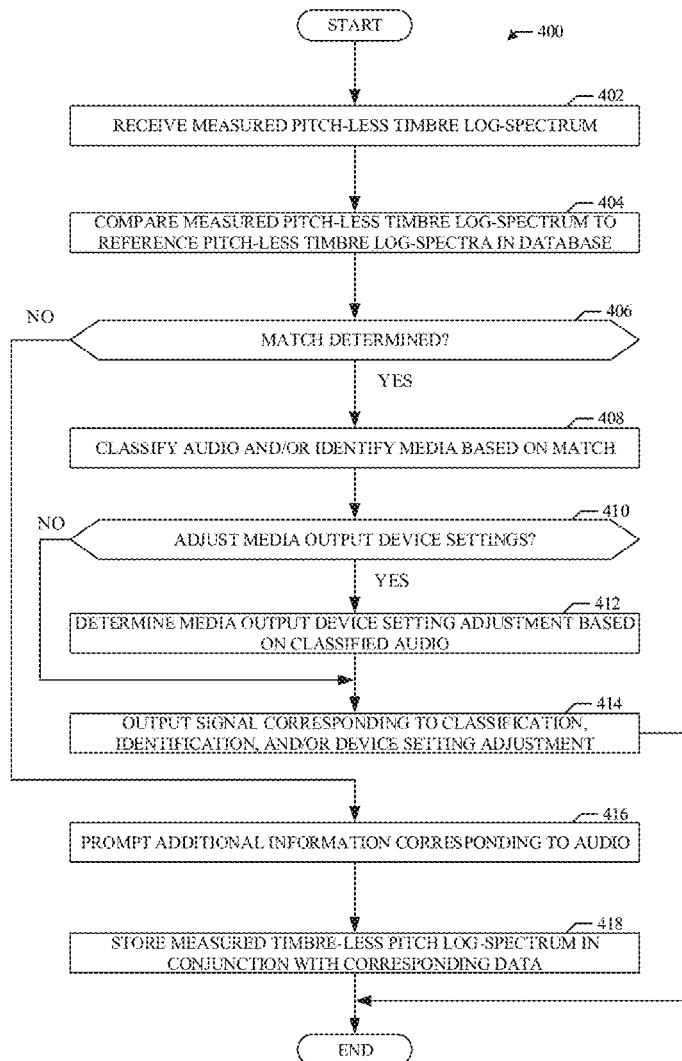


US 20210151021A1

(19) **United States**(12) **Patent Application Publication** (10) **Pub. No.: US 2021/0151021 A1**  
(43) **Pub. Date: May 20, 2021**(54) **METHODS AND APPARATUS TO EXTRACT  
A PITCH-INDEPENDENT TIMBRE  
ATTRIBUTE FROM A MEDIA SIGNAL****Publication Classification**(51) **Int. Cl.**  
**G10H 3/12** (2006.01)  
**G10H 1/06** (2006.01)  
(52) **U.S. Cl.**  
**CPC** ..... **G10H 3/125** (2013.01); **G10H 1/06**  
(2013.01); **G10H 2210/056** (2013.01); **G10H**  
**2250/235** (2013.01); **G10H 2250/221**  
(2013.01)(71) Applicant: **The Nielsen Company (US), LLC,**  
New York, NY (US)(72) Inventor: **Zafar Rafii**, Berkeley, CA (US)(21) Appl. No.: **17/157,780**(22) Filed: **Jan. 25, 2021**(57) **ABSTRACT****Related U.S. Application Data**

(63) Continuation of application No. 16/821,567, filed on Mar. 17, 2020, now Pat. No. 10,902,831, which is a continuation of application No. 16/659,099, filed on Oct. 21, 2019, now Pat. No. 10,629,178, which is a continuation of application No. 16/239,238, filed on Jan. 3, 2019, now Pat. No. 10,482,863, which is a continuation of application No. 15/920,060, filed on Mar. 13, 2018, now Pat. No. 10,186,247.

Methods and apparatus to extract a pitch-independent timbre attribute from a media signal are disclosed. An example apparatus includes an audio characteristic extractor to determine a logarithmic spectrum of an audio signal; transform the logarithmic spectrum of the audio signal into a frequency domain to generate a transform output; determine a magnitude of the transform output; and determine a timbre attribute of the audio signal based on an inverse transform of the magnitude.



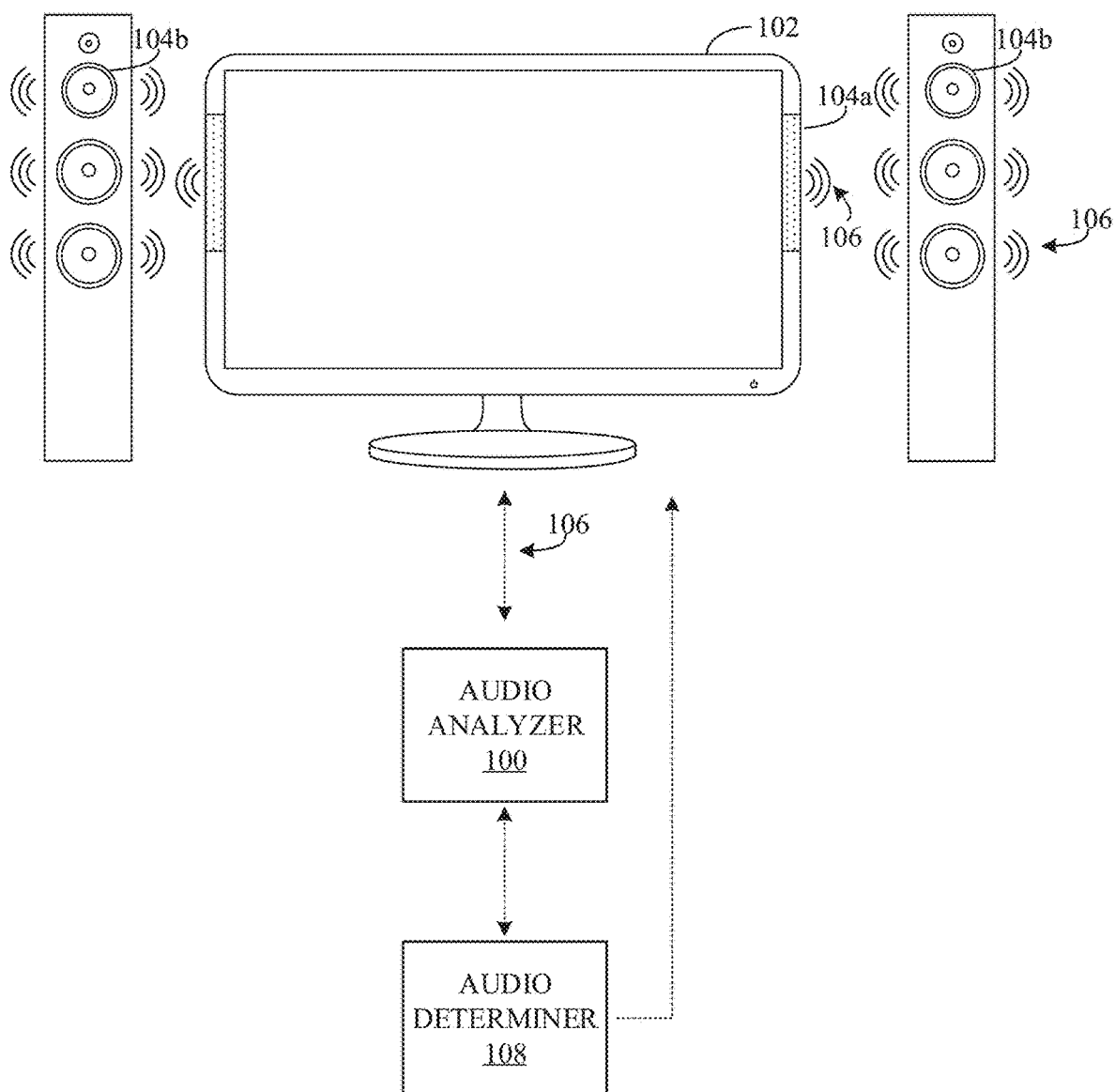


FIG. 1

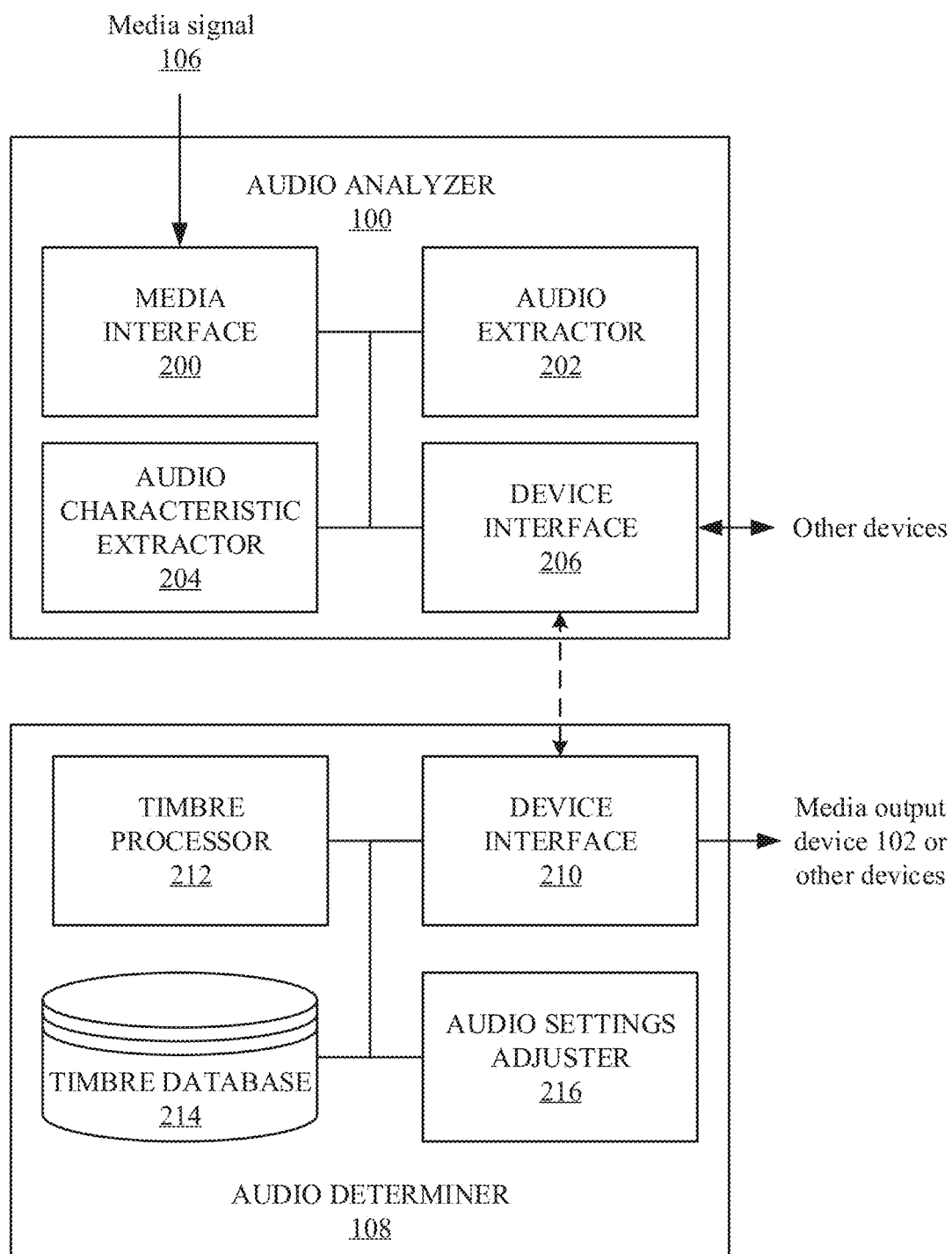


FIG. 2

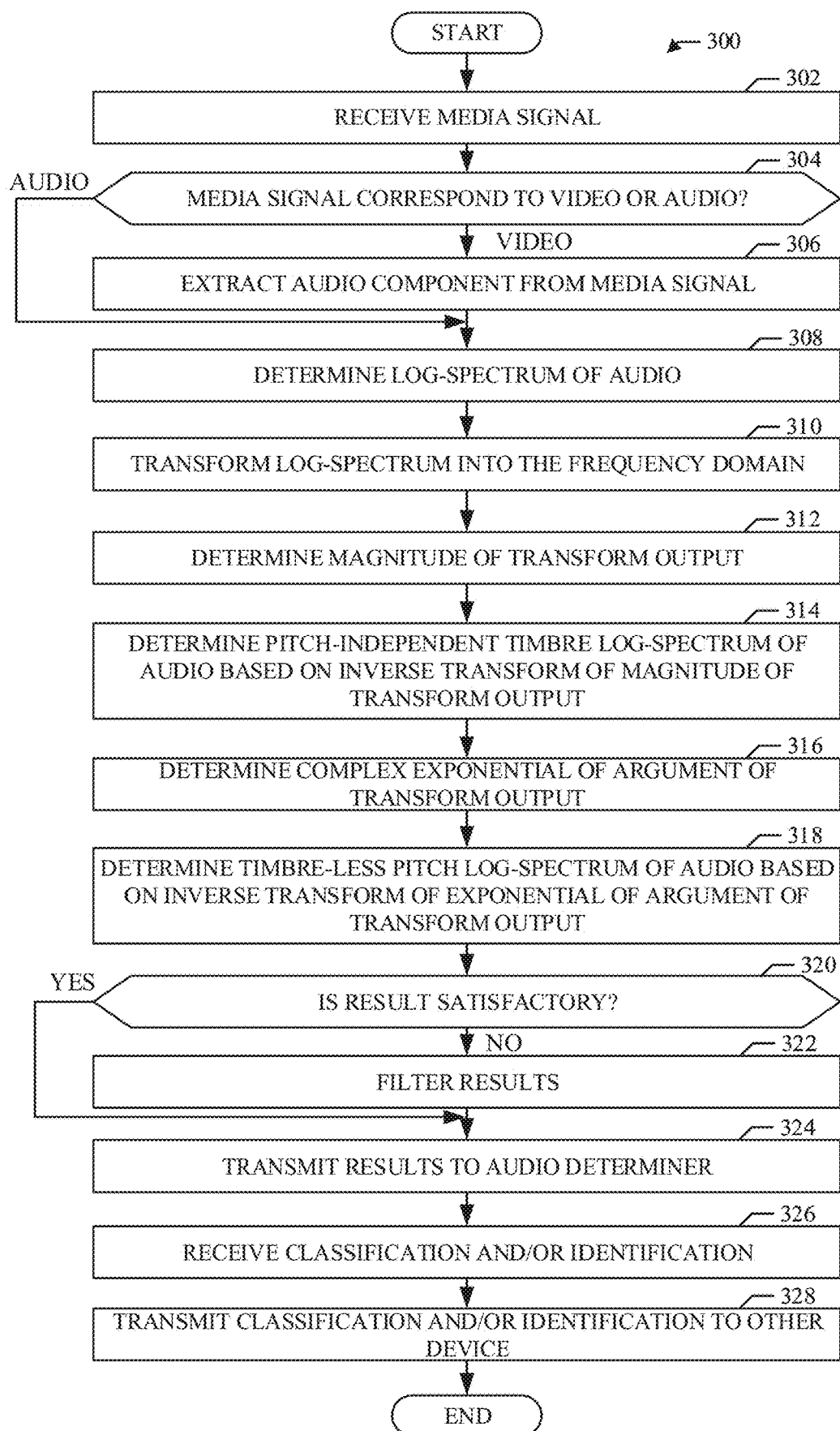


FIG. 3

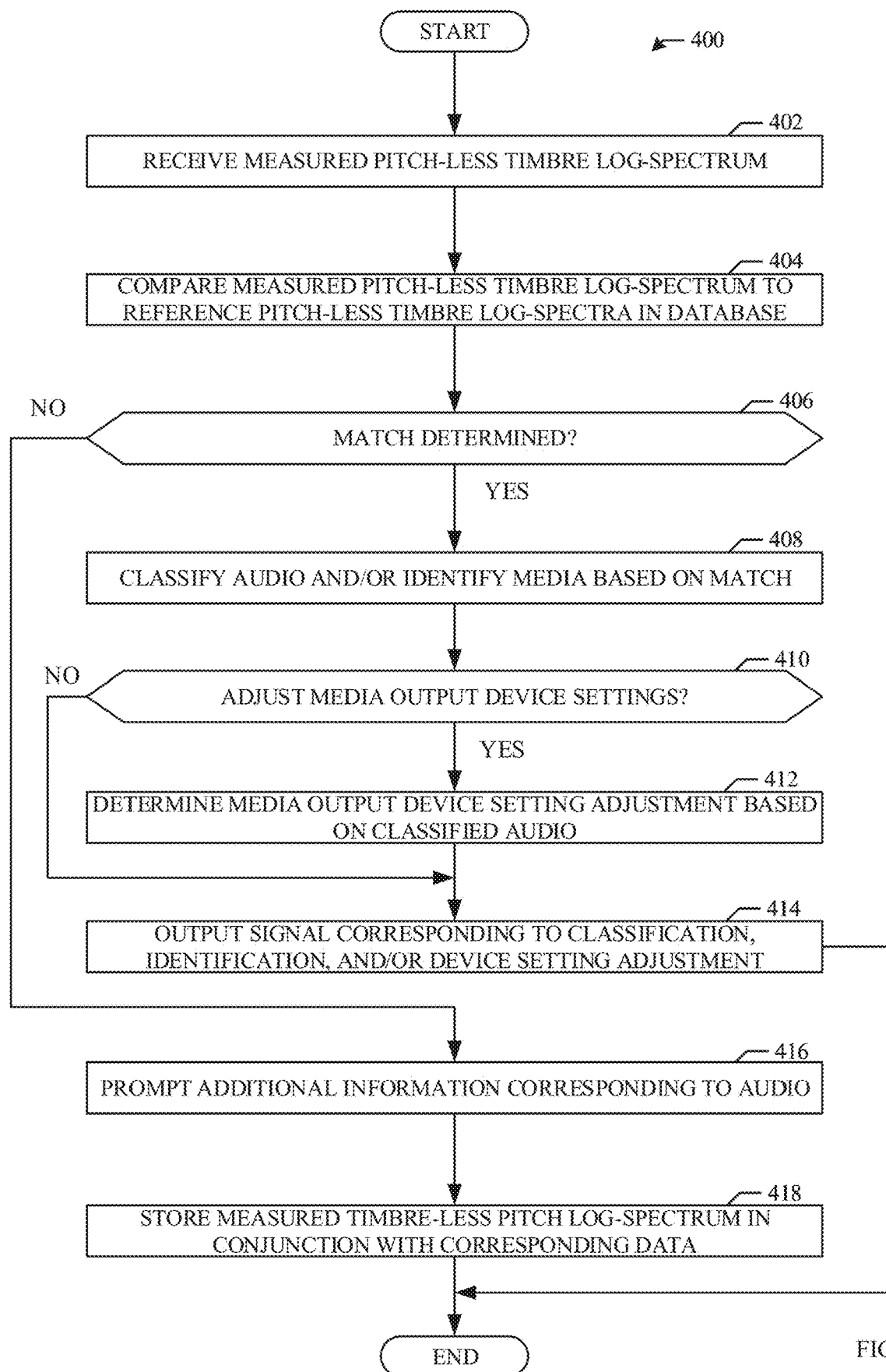


FIG. 4

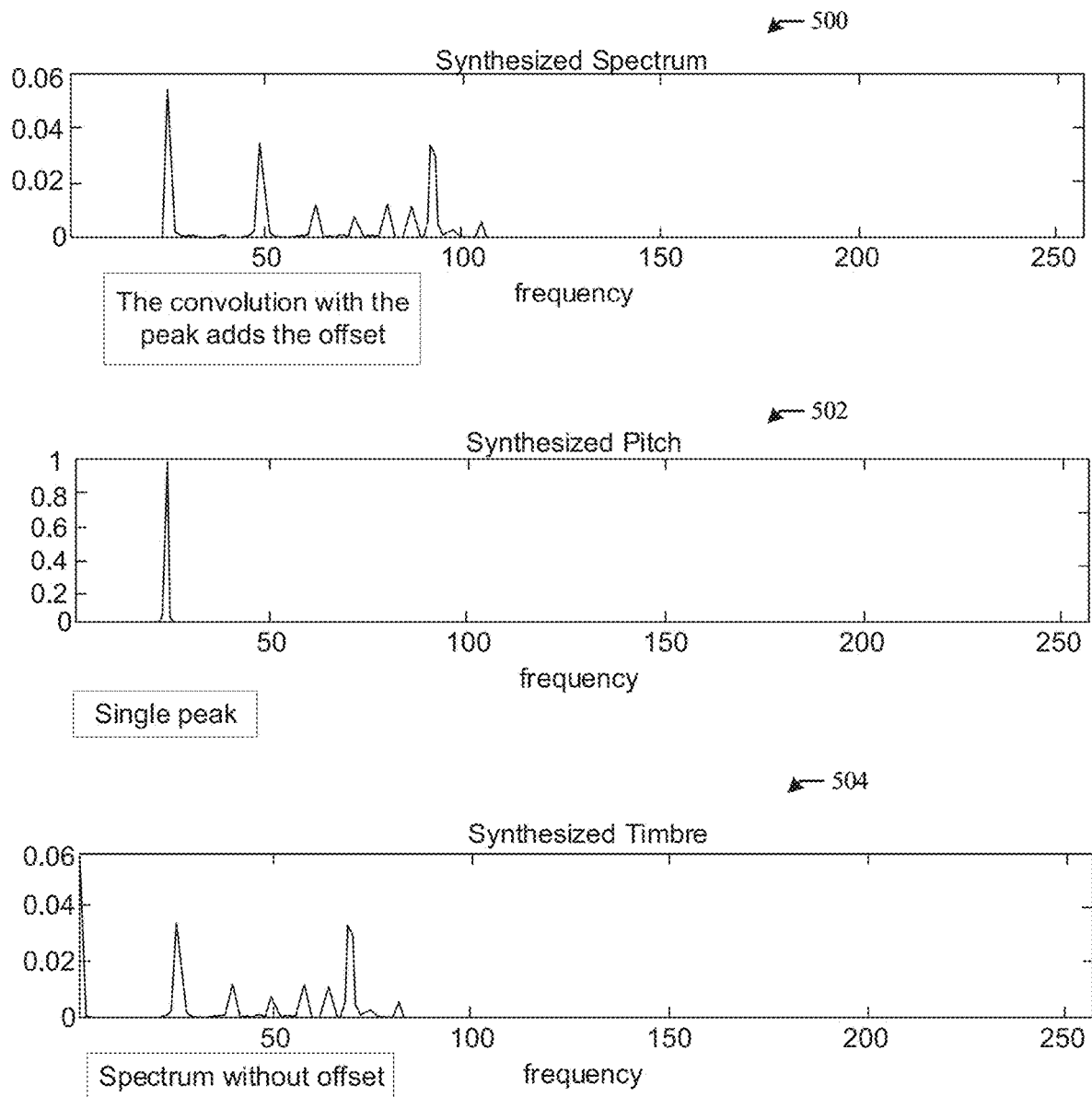


FIG. 5

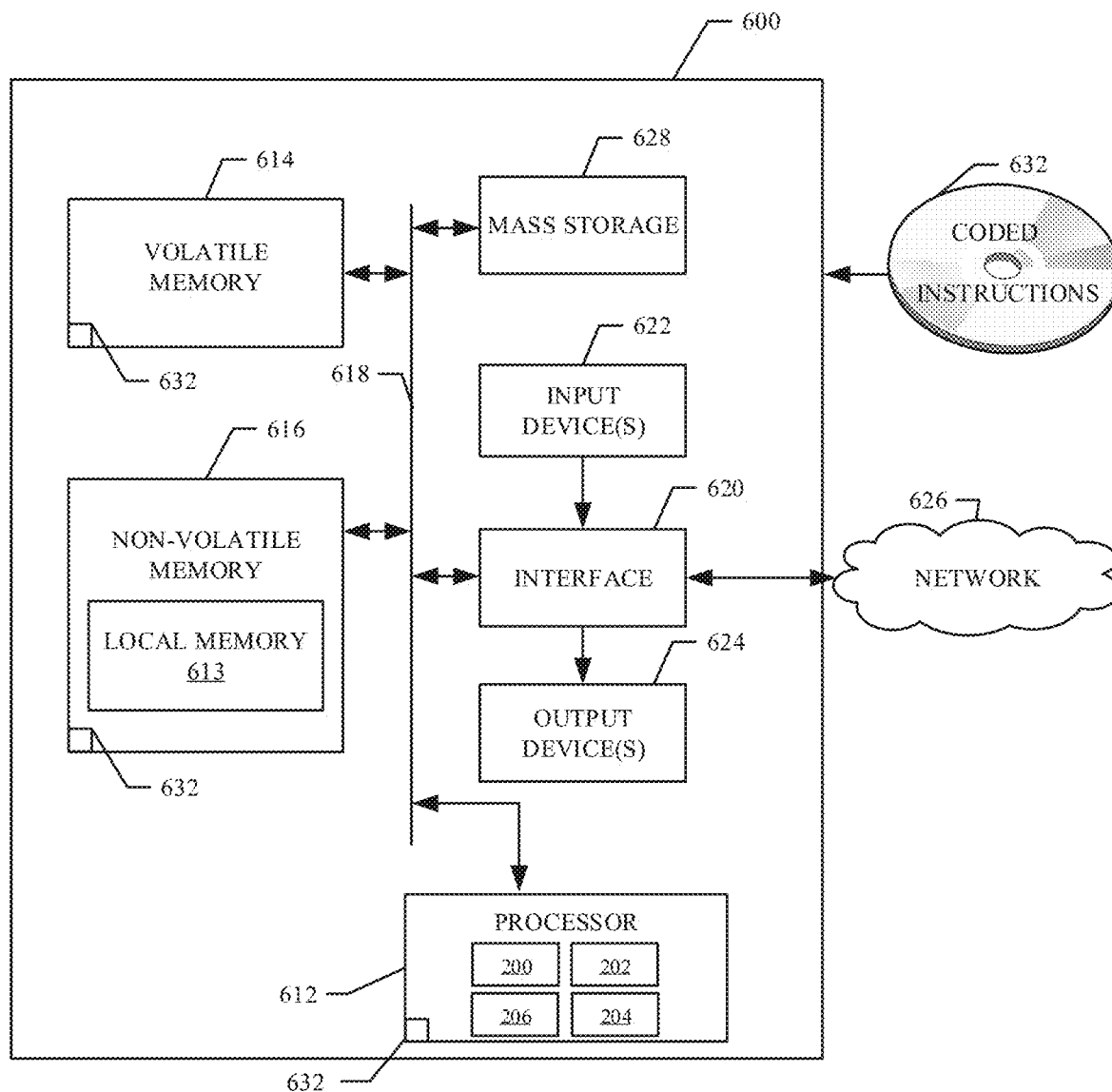


FIG. 6

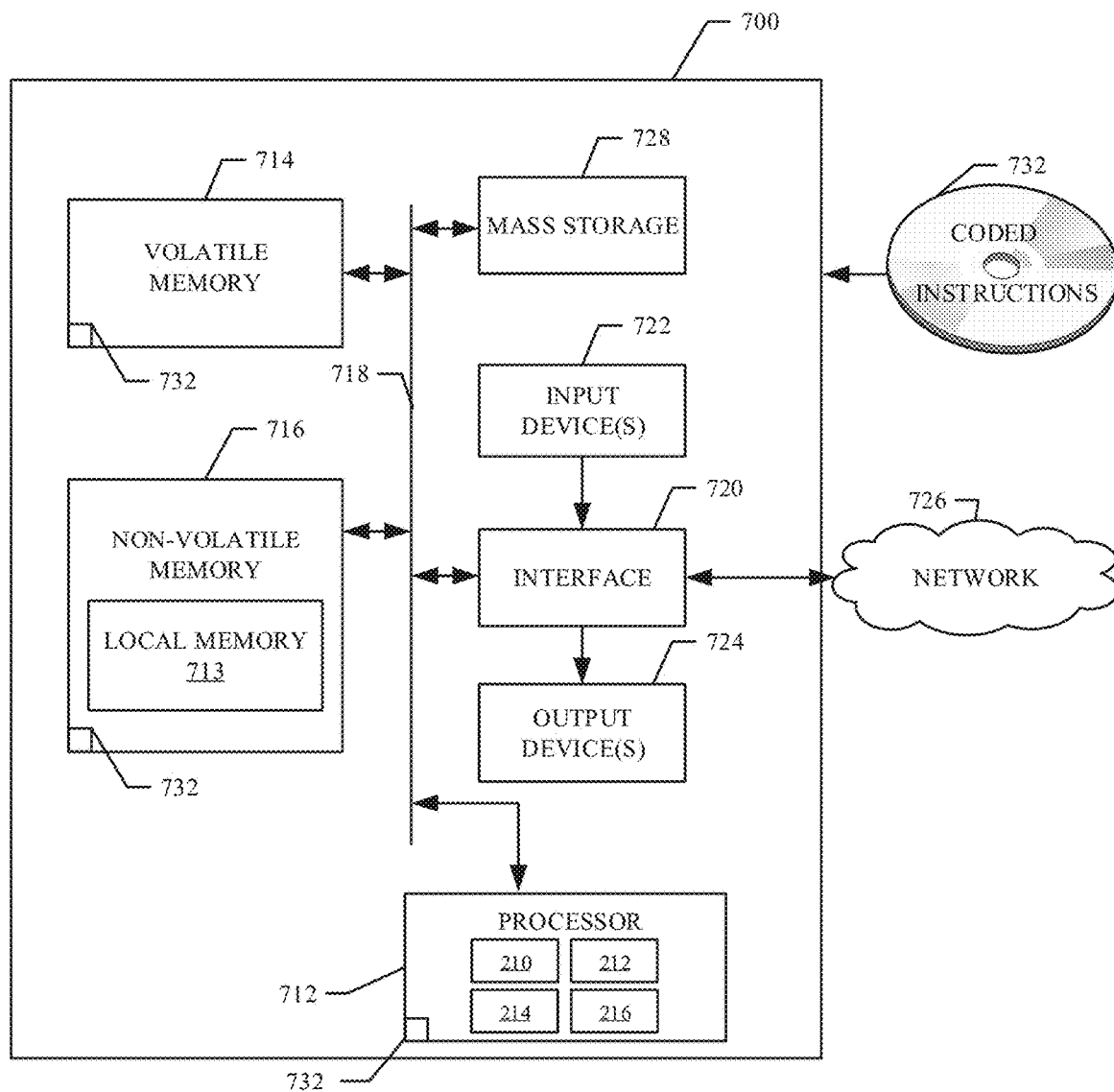


FIG. 7



## METHODS AND APPARATUS TO EXTRACT A PITCH-INDEPENDENT TIMBRE ATTRIBUTE FROM A MEDIA SIGNAL

### RELATED APPLICATION

[0001] This patent arises from a continuation of U.S. patent application Ser. No. 16/821,567, entitled “METHODS AND APPARATUS TO EXTRACT A PITCH-INDEPENDENT TIMBRE ATTRIBUTE FROM A MEDIA SIGNAL,” filed on Mar. 17, 2020, which is a continuation of U.S. patent application Ser. No. 16/659,099, entitled “METHODS AND APPARATUS TO EXTRACT A PITCH-INDEPENDENT TIMBRE ATTRIBUTE FROM A MEDIA SIGNAL,” filed on Oct. 21, 2019, which is a continuation of U.S. patent application Ser. No. 16/239,238, entitled “METHODS AND APPARATUS TO EXTRACT A PITCH-INDEPENDENT TIMBRE ATTRIBUTE FROM A MEDIA SIGNAL,” filed on Jan. 3, 2019, which is a continuation of U.S. patent application Ser. No. 15/920,060, entitled “METHODS AND APPARATUS TO EXTRACT A PITCH-INDEPENDENT TIMBRE ATTRIBUTE FROM A MEDIA SIGNAL,” filed on Mar. 13, 2018. Priority to U.S. patent application Ser. No. 16/821,567, U.S. patent application Ser. No. 16/659,099, U.S. patent application Ser. No. 16/239,238, and U.S. patent application Ser. No. 15/920,060 is claimed. U.S. patent application Ser. No. 16/821,567, U.S. patent application Ser. No. 16/659,099, U.S. patent application Ser. No. 16/239,238, and U.S. patent application Ser. No. 15/920,060 are incorporated herein by reference in their entireties.

### FIELD OF THE DISCLOSURE

[0002] This disclosure relates generally to audio processing and, more particularly, to methods and apparatus to extract a pitch-independent timbre attribute from a media signal.

### BACKGROUND

[0003] Timbre (e.g., timbre/timbral attributes) is a quality/character of audio, regardless of audio pitch or loudness. Timbre is what makes two different sounds sound different from each other, even when they have the same pitch and loudness. For example, a guitar and a flute playing the same note at the same amplitude sound different because the guitar and the flute have different timbre. Timbre corresponds to a frequency and time envelope of an audio event (e.g., the distribution of energy along time and frequency). The characteristics of audio that correspond to the perception of timbre include spectrum and envelope.

### BRIEF DESCRIPTION OF THE DRAWINGS

[0004] FIG. 1 is an illustration of an example meter to extract a pitch-independent timbre attribute from a media signal.

[0005] FIG. 2 is a block diagram of an example audio analyzer and an example audio determiner of FIG. 1.

[0006] FIG. 3 is a flowchart representative of example machine readable instructions that may be executed to implement the example audio analyzer of FIGS. 1 and 2 to extract a pitch-independent timbre attribute from a media signal and/or extract timbre-independent pitch from the media signal.

[0007] FIG. 4 is a flowchart representative of example machine readable instructions that may be executed to implement the example audio determiner of FIGS. 1 and 2 to characterize audio and/or identify media based on a pitch-less timbre log-spectrum.

[0008] FIG. 5 illustrates an example audio signal, an example pitch of the audio signal, and an example timbre of the audio signal that may be determined using the example audio analyzer of FIGS. 1 and 2.

[0009] FIG. 6 is a block diagram of a processor platform structured to execute the example machine readable instructions of FIG. 3 to control the example audio analyzer of FIGS. 1 and 2.

[0010] FIG. 7 is a block diagram of a processor platform structured to execute the example machine readable instructions of FIG. 4 to control the example audio determiner of FIGS. 1 and 2.

[0011] The figures are not to scale. Wherever possible, the same reference numbers will be used throughout the drawing(s) and accompanying written description to refer to the same or like parts.

### DETAILED DESCRIPTION

[0012] Audio meters are devices that capture audio signals (e.g., directly or indirectly) to process the audio signals. For example, when a panelist signs up to have their exposure to media monitored by an audience measurement entity, the audience measurement entity may send a technician to the home of the panelist to install a meter (e.g., a media monitor) capable of gathering media exposure data from a media output device(s) (e.g., a television, a radio, a computer, etc.). In another example, meters may correspond to instructions being executed on a processor in smart phones, for example, to process received audio and/or video data to determine characteristics of the media.

[0013] Generally, a meter includes or is otherwise connected to an interface to receive media signals directly from a media source or indirectly (e.g., a microphone and/or a magnetic-coupling device to gather ambient audio). For example, when the media output device is “on,” the microphone may receive an acoustic signal transmitted by the media output device. The meter may process the received acoustic signal to determine characteristics of the audio that may be used to characterize and/or identify the audio or a source of the audio. When a meter corresponds to instructions that operate within and/or in conjunction with a media output device to receive audio and/or video signals to be output by the media output device, the meter may process/analyze the incoming audio and/or video signals to directly determine data related to the signals. For example, a meter may operate in a set-top-box, a receiver, a mobile phone, etc. to receive and process incoming audio/video data prior to, during, or after being output by a media output device.

[0014] In some examples, audio metering devices/instructions utilize various characteristics of audio to classify and/or identify audio and/or audio sources. Such characteristics may include energies of a media signal, energies of the frequency bands of media signals, discrete cosine transform (DCT) coefficients of a media signal, etc. Examples disclosed herein classify and/or identify media based on timbre of the audio corresponding to a media signal.

[0015] Timbre (e.g., timbre/timbral attributes) is a quality/character of audio, regardless of audio pitch or loudness. For example, a guitar and a flute playing the same note at the

same amplitude sound different because the guitar and the flute have different timbre. Timbre corresponds to a frequency and time envelope of an audio event (e.g., the distribution of energy along time and frequency). Traditionally, timbre has been characterized through various features. However, timbre has not been extracted from audio, independent of other aspects of the audio (e.g., pitch). Accordingly, identifying media based on pitch-dependent timbre measurements would require a large database of reference pitch-dependent timbres corresponding to timbres for each category and each pitch. Examples disclosed herein extract a pitch-independent timbre log-spectrum from measured audio that is independent from pitch, thereby reducing the resources required to classify and/or identify media based on timbre.

**[0016]** As explained above, the extracted pitch-independent timbre may be used to classify media and/or identify media and/or may be used as part of a signaturing algorithm. For example, extracted pitch-independent timbre attribute (e.g., log-spectrum) may be used to determine that measured audio (e.g., audio samples) corresponds to violin, regardless of the notes being played by the violin. In some examples, the characteristic audio may be used to adjust audio settings of a media output device to provide a better audio experience for a user. For example, some audio equalizer settings may be better suited for audio from a particular instrument and/or genre. Accordingly, examples disclosed herein may adjust the audio equalizer settings of a media output device based on an identified instrument/genre corresponding to an extracted timbre. In another example, extracted pitch-independent timbre may be used to identify a media being output by a media presentation device (e.g., a television, computer, radio, smartphone, tablet, etc.) by comparing the extracted pitch-independent timbre attribute to reference timbre attributes in a database. In this manner, the extracted timbre and/or pitch may be used to provide an audience measurement entity with more detailed media exposure information than conventional techniques that only consider pitch of received audio.

**[0017]** FIG. 1 illustrates an example audio analyzer 100 to extract a pitch-independent timbre attribute from a media signal. FIG. 1 includes the example audio analyzer 100, an example media output device 102, example speakers 104a, 104b, an example media signal 106, and an example audio determiner 108.

**[0018]** The example audio analyzer 100 of FIG. 1 receives media signals from a device (e.g., the example media output device 102 and/or the example speakers 104a, 104b) and processes the media signal to determine a pitch-independent timbre attribute (e.g., log-spectrum) and a timbre-independent pitch attribute. In some examples, the audio analyzer 100 may include, or otherwise be connected to, a microphone to receive the example media signal 106 by sensing ambient audio. In such examples, the audio analyzer 100 may be implemented in a meter or other computing device utilizing a microphone (e.g., a computer, a tablet, a smartphone, a smart watch, etc.). In some examples, the audio analyzer 100 includes an interface to receive the example media signal 106 directly (e.g., via a wired or wireless connection) from the example media output device 102 and/or a media presentation device presenting the media to the media output device 102. For example, the audio analyzer 100 may receive the media signal 106 directly from a set-top-box, a mobile phone, a gaming device, an audio

receiver, a DVD player, a blue-ray player, a tablet, and/or any other devices that provides media to be output by the media output device 102 and/or the example speakers 104a, 104b. As further described below in conjunction with FIG. 2, the example audio analyzer 100 extracts the pitch-independent timbre attribute and/or the timbre-independent pitch attribute from the media signal 106. If the media signal 106 is a video signal with an audio component, the example audio analyzer 100 extracts the audio component from the media signal 106 prior to extracting the pitch and/or timbre.

**[0019]** The example media output device 102 of FIG. 1 is a device that outputs media. Although the example media output device 102 of FIG. 1 is illustrated as a television, the example media output device 102 may be a radio, an MP3 player, a video game console, a stereo system, a mobile device, a tablet, a computing device, a laptop, a projector, a DVD player, a set-top-box, an over-the-top device, and/or any device capable of outputting media (e.g., video and/or audio). The example media output device may include speakers 104a and/or may be coupled, or otherwise connected to portable speakers 104b via a wired or wireless connection. The example speakers 104a, 104b output the audio portion of the media output by the example media output device. In the illustrated example of FIG. 1, the media signal 106 represents audio that is output by the example speakers 104a, 104b. Additionally or alternatively, the example media signal 106 may be an audio signal and/or a video signal that is transmitted to the example media output device 102 and/or the example speakers 104a, 104b to be output by the example media output device 102 and/or the example speakers 104a, 104b. For example, the example media signal 106 may be a signal from a gaming console that is transmitted to the example media output device 102 and/or the example speakers 104a, 104b to output audio and video of a video game. The example audio analyzer 100 may receive the media signal 106 directly from the media presentation device (e.g., the gaming console) and/or from the ambient audio. In this manner, the audio analyzer 100 may classify and/or identify audio from a media signal even when the speakers 104a, 104b are off, not working, or turned down.

**[0020]** The example audio determiner 108 of FIG. 1 characterizes audio and/or identifies media based on a receives pitch-independent timbre attribute measurements from the example audio analyzer 100. For example, the audio determiner 108 may include a database of reference pitch-independent timbre attributes corresponding to classifications and/or identifications. In this manner, the example audio determiner 108 may compare received pitch-independent timbre attribute(s) with the reference pitch-independent attribute to identify a match. If the example audio determiner 108 identifies a match, the example audio determiner 108 classifies the audio and/or identifies the media on information corresponding to the matched reference timbre attribute. For example, if a received timbre attribute matches a reference attribute corresponding to a trumpet, the example audio determiner 108 classifies the audio corresponding to the received timbre attribute as audio from a trumpet. In such an example, if the audio analyzer 100 is part of a mobile phone, the example audio analyzer 100 may receive an audio signal of the trumpet playing a song (e.g., via an interface receiving the audio/video signal or via a microphone of the mobile phone receiving the audio signal). In this manner, the audio determiner 108 may identify that the instrument correspond-

ing to the received audio is a trumpet and identify the trumpet to the user (e.g., using a user interface of the mobile device). In another example, if a received timbre attribute matches a reference attribute corresponding to a particular video game, the example audio determiner **108** may identify the audio corresponding to the received timbre attribute as being from the particular video game. The example audio determiner **108** may generate a report to identify the audio. In this manner, an audience measurement entity may credit exposure to the video game based on the report. In some examples, the audio determiner **108** receives the timbre directly from the audio analyzer **100** (e.g., both the audio analyzer **100** and the audio determiner **108** are located in the same device). In some examples, the audio determiner **108** is located in a different location and receives the timbre from the example audio analyzer **100** via a wireless communication. In some example the audio determiner **108** transmits instructions to the example audio media output device **102** and/or the example audio analyzer **100** (e.g., when the example audio analyzer **100** is implemented in the example media output device **102**) to adjust the audio equalizer settings based on the audio classification. For example, if the audio determiner **108** classifies audio being output by the media output device **102** as being from a trumpet, the example audio determiner **108** may transmit instructions to adjust the audio equalizer settings to settings that correspond to trumpet audio. The example audio determiner **108** is further described below in conjunction with FIG. 2.

**[0021]** FIG. 2 includes block diagrams of example implementations of the example audio analyzer **100** and the example audio determiner **108** of FIG. 1. The example audio analyzer **100** of FIG. 2 includes an example media interface **200**, an example audio extractor **202**, an example audio characteristic extractor **204**, and an example device interface **206**. The example audio determiner **108** of FIG. 2 includes an example device interface **210**, an example timbre processor **212**, an example timbre database **214**, and an example audio settings adjuster **216**. In some examples, elements of the example audio analyzer **100** may be implemented in the example audio determiner **108** and/or elements of the example audio determiner **108** may be implemented in the example audio analyzer **100**.

**[0022]** The example media interface **200** of FIG. 2 receives (e.g., samples) the example media signal **106** of FIG. 1. In some examples, the media interface **200** may be a microphone used to obtain the media signal **106** as audio by gathering the media signal **106** through the sensing of ambient audio. In some examples, the media interface **200** may be an interface to directly receive an audio and/or video signal (e.g., a digital representation of a media signal) that is to be output by the example media output device **102**. In some examples, the media interface **200** may include two interfaces, a microphone for detecting and sampling ambient audio and an interface to directly receive and/or sample an audio and/or video signal.

**[0023]** The example audio extractor **202** of FIG. 2 extracts audio from the received/sampled media signal **106**. For example, the audio extractor **202** determines if a received media signal **106** corresponds to an audio signal or a video signal with an audio component. If the media signal corresponds to a video signal with an audio component, the example audio extractor **202** extracts the audio component to generate the audio signal/samples for further processing.

**[0024]** The example audio characteristic extractor **204** of FIG. 2 processes the audio signal/samples to extract a pitch-independent timbre log-spectrum and/or a timbre-independent pitch log-spectrum. A log-spectrum is a convolution between a pitch-independent (e.g., pitch-less) timbre log-spectrum and the timbre-independent (e.g., timbre-less) pitch log-spectrum (e.g.,  $X = T * P$ , where  $X$  is the log-spectrum of an audio signal,  $T$  is the pitch-independent log-spectrum, and  $P$  is the timbre-independent pitch log-spectrum). Thus, in the Fourier domain, the magnitude of the Fourier transform (FT) of the log-spectrum on an audio signal may correspond to an approximation of the FT of the timbre (e.g.,  $F(X) = F(T) \times F(P)$ , where  $F(\cdot)$  is a Fourier transform,  $F(T) \approx |F(X)|$ , and  $F(P) \approx e^{j \arg(F(X))}$ ). A complex argument is a combination of the magnitude and the phase (e.g., corresponding to energy and offset). Thus, the FT of the timbre can be approximated by the magnitude of the FT of the log-spectrum. Accordingly, to determine the pitch-independent timbre log-spectrum and/or timbre-independent pitch log-spectrum of the audio signal, the example audio characteristic extractor **204** determines the log-spectrum of the audio signal (e.g., using a constant Q transform (CQT)) and transforms the log-spectrum into the frequency domain (e.g., using a FT). In this manner, the example audio characteristic extractor **204** (A) determines the pitch-dependent timbre log-spectrum based on an inverse transform (e.g., inverse Fourier transform ( $F^{-1}$ ) of the magnitude of the transform output (e.g.,  $T = F^{-1}(|F(X)|)$ ) and (B) determines the timbre-less pitch log-spectrum based on an inverse transform of a complex argument of the transform output (e.g.,  $P = F^{-1}(e^{j \arg(F(X))})$ ). The log frequency scale of an audio spectrum of the audio signal allows a pitch shift to be equivalent to a vertical translation. Thus, the example audio characteristic extractor **204** determines the log-spectrum of the audio signal using a CQT.

**[0025]** In some examples, if the example audio characteristic extractor **204** of FIG. 2 determines that resulting timbre and/or pitch is not satisfactory, the audio characteristic extractor **204** filters the results to improve the decomposition. For example, the audio characteristic extractor **204** may filter the results by emphasizing particular harmonics in the timbre or by forcing a single peak/line in the pitch and updating other components of the result. The example audio characteristic extractor **204** may filter once or may perform an iterative algorithm while updating the filter/pitch at each iteration, thereby ensuring that the overall convolution of pitch and timbre result in the original log-spectrum of the audio. The audio characteristic extractor **204** may determine that the results are unsatisfactory based on user and/or manufacturer preferences.

**[0026]** The example device interface **206** of the example audio analyzer **100** of FIG. 2 interfaces with the example audio determiner **108** and/or other devices (e.g., user interfaces, processing device, etc.). For example, when the audio characteristic extractor **204** determines the pitch-independent timbre attribute, the example device interface **206** may transmit the attribute to the example audio determiner **108** to classify the audio and/or identify media. In response, the device interface **206** may receive a classification and/or identification (e.g., an identifier corresponding to the source of the media signal **106**) from the example audio determiner **108** (e.g., in a signal or report). In such an example, the example device interface **206** may transmit the classification and/or identification to other devices (e.g., a user interface)

to display the classification and/or identification to a user. For example, if the audio analyzer **100** is being used in conjunction with a smart phone, the device interface **206** may output the results of the classification and/or identification to a user of the smartphone via an interface (e.g., screen) of the smartphone.

**[0027]** The example device interface **210** of the example audio determiner **108** of FIG. 2 receives pitch-independent timbre attributes from the example audio analyzer **100**. Additionally, the example device interface **210** outputs a signal/report representative of the classification and/or identification determined by the example audio determiner **108**. The report may be a signal that corresponds to the classification and/or identification based on the received timbre. In some examples, the device interface **210** transmits the report (e.g., including an identification of media corresponding to the timbre) to a processor (e.g., such as a processor of an audience measurement entity) for further processing. For example, the processor of the receiving device may process the report to generate media exposure metrics, audience measurement metrics, etc. In some examples, the device interface **210** transmits the report to the example audio analyzer **100**.

**[0028]** The example timbre processor **212** of FIG. 2 processes the received timbre attribute of the example audio analyzer **100** to characterize the audio and/or identify the source of the audio. For example, the timbre processor **212** may compare the received timbre attribute to reference attributes in the example timbre database **214**. In this manner, if the example timbre processor **212** determines that the received timbre attribute matches a reference attribute, the example timbre processor **212** classifies and/or identifies a source of the audio based on data corresponding to the matched reference timbre attribute. For example, if the timbre processor **212** determines that a received timbre attribute matches a reference timbre attribute that corresponds to a particular commercial, the timbre processor **212** identifies the source of the audio to be the particular commercial. In some examples, the classification may include a genre classification. For example, if the example timbre processor **212** determines a number of instruments based on the timbre, the example timbre processor **212** may identify a genre of audio (e.g., classical, rock, hip hop, etc.) based on the identified instruments and/or based on the timbre itself. In some examples, when the timbre processor **212** does not find a match, the example timbre processor **212** stores the received timbre attribute in the timbre database **214** to become a new reference timbre attribute. If the example timbre processor **212** stores a new reference timbre in the example timbre database **214**, the example device interface **210** transmits instructions to the example audio analyzer **100** to prompt a user for identification information (e.g., what is the classification of the audio, what is the source of the media, etc.). In this manner, if the audio analyzer **100** responds with additional information, the timbre database **214** may store the additional information in conjunction with the new reference timbre. In some examples, a technician analyzes the new reference timbre to determine the additional information. The example timbre processor **212** generates a report based on the classification and/or identification.

**[0029]** The example audio settings adjuster **216** of FIG. 2 determines audio equalizer settings based on the classified audio. For example, if the classified audio corresponds to

one or more instruments and/or a genre, the example audio settings adjuster **216** may determine an audio equalizer setting corresponding to the one or more instruments and/or the genre. In some examples, if the audio is classified as classical music, the example audio settings adjuster **216** may select a classical audio equalizer setting (e.g., based on a level of bass, a level of tremble, etc.) corresponding to classical music. In this manner, the example device interface **210** may transmit the audio equalizer setting to the example media output device **102** and/or the example audio analyzer **100** to adjust the audio equalizer settings of the example media output device **102**.

**[0030]** While an example manner of implementing the example audio analyzer **100** and the example audio determiner **108** of FIG. 1 is illustrated in FIG. 2, one or more of the elements, processes and/or devices illustrated in FIG. 2 may be combined, divided, re-arranged, omitted, eliminated and/or implemented in any other way. Further, the example media interface **200**, the example audio extractor **202**, the example audio characteristic extractor **204**, the example device interface **206**, the example audio settings adjuster **216**, and/or, more generally, the example audio analyzer **100** of FIG. 2 and/or the example device interface **210**, the example timbre processor **212**, the example timbre database **214**, the example audio settings adjuster **216**, and/or, more generally, the example audio determiner **108** of FIG. 2 may be implemented by hardware, software, firmware and/or any combination of hardware, software and/or firmware. Thus, for example, any of the example media interface **200**, the example audio extractor **202**, the example audio characteristic extractor **204**, the example device interface **206**, and/or, more generally, the example audio analyzer **100** of FIG. 2 and/or the example device interface **210**, the example timbre processor **212**, the example timbre database **214**, the example audio settings adjuster **216**, and/or, more generally, the example audio determiner **108** of FIG. 2 could be implemented by one or more analog or digital circuit(s), logic circuits, programmable processor(s), programmable controller(s), graphics processing unit(s) (GPU(s)), digital signal processor(s) (DSP(s)), application specific integrated circuit(s) (ASIC(s)), programmable logic device(s) (PLD(s)) and/or field programmable logic device(s) (FPLD(s)). When reading any of the apparatus or system claims of this patent to cover a purely software and/or firmware implementation, at least one of the example media interface **200**, the example audio extractor **202**, the example audio characteristic extractor **204**, the example device interface **206**, and/or, more generally, the example audio analyzer **100** of FIG. 2 and/or the example device interface **210**, the example timbre processor **212**, the example timbre database **214**, the example audio settings adjuster **216**, and/or, more generally, the example audio determiner **108** of FIG. 2 is/are hereby expressly defined to include a non-transitory computer readable storage device or storage disk such as a memory, a digital versatile disk (DVD), a compact disk (CD), a Blu-ray disk, etc. including the software and/or firmware. Further still, the example audio analyzer **100** and/or the example audio determiner **108** of FIG. 1 may include one or more elements, processes and/or devices in addition to, or instead of, those illustrated in FIG. 2, and/or may include more than one of any or all of the illustrated elements, processes and devices. As used herein, the phrase “in communication,” including variations thereof, encompasses direct communication and/or indirect communication through one or more

intermediary components, and does not require direct physical (e.g., wired) communication and/or constant communication, but rather additionally includes selective communication at periodic intervals, scheduled intervals, aperiodic intervals, and/or one-time events.

[0031] A flowchart representative of example hardware logic or machine readable instructions for implementing the audio analyzer 100 of FIG. 2 is shown in FIG. 3 and a flowchart representative of example hardware logic or machine readable instructions for implementing the audio determiner 108 of FIG. 2 is shown in FIG. 4. The machine readable instructions may be a program or portion of a program for execution by a processor such as the processor 612, 712 shown in the example processor platform 600, 700 discussed below in connection with FIGS. 6 and/or 7. The program may be embodied in software stored on a non-transitory computer readable storage medium such as a CD-ROM, a floppy disk, a hard drive, a DVD, a Blu-ray disk, or a memory associated with the processor 612, 712, but the entire program and/or parts thereof could alternatively be executed by a device other than the processor 612, 712 and/or embodied in firmware or dedicated hardware. Further, although the example program is described with reference to the flowcharts illustrated in FIGS. 3-4, many other methods of implementing the example audio analyzer 100 and/or the example audio determiner 108 may alternatively be used. For example, the order of execution of the blocks may be changed, and/or some of the blocks described may be changed, eliminated, or combined. Additionally or alternatively, any or all of the blocks may be implemented by one or more hardware circuits (e.g., discrete and/or integrated analog and/or digital circuitry, an FPGA, an ASIC, a comparator, an operational-amplifier (op-amp), a logic circuit, etc.) structured to perform the corresponding operation without executing software or firmware.

[0032] As mentioned above, the example processes of FIGS. 3-4 may be implemented using executable instructions (e.g., computer and/or machine readable instructions) stored on a non-transitory computer and/or machine readable medium such as a hard disk drive, a flash memory, a read-only memory, a compact disk, a digital versatile disk, a cache, a random-access memory and/or any other storage device or storage disk in which information is stored for any duration (e.g., for extended time periods, permanently, for brief instances, for temporarily buffering, and/or for caching of the information). As used herein, the term non-transitory computer readable medium is expressly defined to include any type of computer readable storage device and/or storage disk and to exclude propagating signals and to exclude transmission media.

[0033] “Including” and “comprising” (and all forms and tenses thereof) are used herein to be open ended terms. Thus, whenever a claim employs any form of “include” or “comprise” (e.g., comprises, includes, comprising, including, having, etc.) as a preamble or within a claim recitation of any kind, it is to be understood that additional elements, terms, etc. may be present without falling outside the scope of the corresponding claim or recitation. As used herein, when the phrase “at least” is used as the transition term in, for example, a preamble of a claim, it is open-ended in the same manner as the term “comprising” and “including” are open ended. The term “and/or” when used, for example, in a form such as A, B, and/or C refers to any combination or

subset of A, B, C such as (1) A alone, (2) B alone, (3) C alone, (4) A with B, (5) A with C, and (6) B with C.

[0034] FIG. 3 is an example flowchart 300 representative of example machine readable instructions that may be executed by the example audio analyzer 100 of FIGS. 1 and 2 to extract a pitch-independent timbre attribute from a media signal (e.g., an audio signal of a media signal). Although the instructions of FIG. 3 are described in conjunction with the example audio analyzer 100 of FIG. 1, the example instructions may be used by an audio analyzer in any environment.

[0035] At block 302, the example media interface 200 receives one or more media signals or samples of media signals (e.g., the example media signal 106). As described above, the example media interface 200 may receive the media signal 106 directly (e.g., as a signal to/from the media output device 102) or indirectly (e.g., as a microphone detecting the media signal by sensing ambient audio). At block 304, the example audio extractor 202 determines if the media signal correspond to video or audio. For example, if the media signal was received using a microphone, the audio extractor 202 determines that the media corresponds to audio. However, if the media signal is received signal, the audio extractor 202 processes the received media signal to determine if the media signal corresponds to audio or video with an audio component. If the example audio extractor 202 determines that the media signal corresponds to audio (block 304: AUDIO), the process continues to block 308. If the example audio extractor 202 determines that the media signal corresponds to video (block 306: VIDEO), the example audio extractor 202 extracts the audio component from the media signal (block 306).

[0036] At block 308, the example audio characteristic extractor 204 determines the log-spectrum of the audio signal (e.g.,  $X$ ). For example, the audio characteristic extractor 204 may determine the log-spectrum of the audio signal by performing a CQT. At block 310, the example audio characteristic extractor 204 transforms the log-spectrum into the frequency domain. For example, the audio characteristic extractor 204 performs a FT to the log-spectrum (e.g.,  $F(X)$ ). At block 312, the example audio characteristic extractor 204 determines the magnitude of the transform update (e.g.,  $|F(X)|$ ). At block 314, the example audio characteristic extractor 204 determines the pitch-independent timbre log-spectrum of the audio based on the inverse transform (e.g., inverse FT) of the magnitude of the transform output (e.g.,  $T = F^{-1}(|F(X)|)$ ). At block 316, the example audio characteristic extractor 204 determines the complex argument of the transform output (e.g.,  $e^{j \arg(F(X))}$ ). At block 318, the example audio characteristic extractor 204 determines the timbre-less pitch log-spectrum of the audio based on the inverse transform (e.g., inverse FT) of the complex argument of the transform output (e.g.,  $P = F^{-1}(e^{j \arg(F(X))})$ ).

[0037] At block 320, the example audio characteristic extractor 204 determines if the result(s) (e.g., the determined pitch and/or the determined timbre) is satisfactory. As described above in conjunction with FIG. 2, the example audio characteristic extractor 204 determines that the result (s) are satisfactory based on user and/or manufacturer result preferences. If the example audio characteristic extractor 204 determines that the results are satisfactory (block 320: YES), the process continues to block 324. If the example audio characteristic extractor 204 determines that the results are not satisfactory (block 320: NO), the example audio char-

acteristic extractor **204** filters the results (block **322**). As described above in conjunction with FIG. 2, the example audio characteristic extractor **204** may filter the results by emphasizing harmonics in the timber or forcing a single peak/line in the pitch (e.g., once or iteratively).

[0038] At block **324**, the example device interface **206** transmits the results to the example audio determiner **108**. At block **326**, the example audio characteristic extractor **204** receives a classification and/or identification data corresponding to the audio signal. Alternatively, if the audio determiner **108** was not able to match the timber of the audio signal to a reference, the device interface **206** may transmit instructions for additional data corresponding to the audio signal. In such examples, the device interface **206** may transmit prompt to a user interface for a user to provide the additional data. Accordingly, the example device interface **206** may provide the additional data to the example audio determiner **108** to generate a new reference timber attribute. At block **328**, the example audio characteristic extractor **204** transmits the classification and/or identification to other connected devices. For example, the audio characteristic extractor **204** may transmit a classification to a user interface to provide the classification to a user.

[0039] FIG. 4 is an example flowchart **400** representative of example machine readable instructions that may be executed by the example audio determine **108** of FIGS. 1 and 2 to classify audio and/or identify media based on a pitch-independent timber attribute of audio. Although the instructions of FIG. 4 are described in conjunction with the example audio determiner **108** of FIG. 1, the example instructions may be used by an audio determiner in any environment.

[0040] At block **402**, the example device interface **210** receives a measured (e.g., determined or extracted) pitch-less timber log-spectrum from the example audio analyzer **100**. At block **404**, the example timber processor **212** compares the measured pitch-less timber log-spectrum to the reference pitch-less timber log-spectra in the example timber database **214**. At block **406**, the example timber processor **212** determines if a match is found between the received pitch-less timber attribute and the reference pitch-less timber attributes. If the example timber processor **212** determines that a match is determined (block **406**: YES), the example timber processor **212** classifies the audio (e.g., identifying instruments and/or genres) and/or identifies media corresponding to the audio based on the match (block **408**) using additional data stored in the example timber database **214** corresponding to the matched reference timber attribute.

[0041] At block **410**, the example audio settings adjuster **216** determines whether the audio settings of the media output device **102** can be adjusted. For example, there may be an enabled setting to allow the audio settings of the media output device **102** to be adjusted based on a classification of the audio being output by the example media output device **102**. If the example audio settings adjuster **216** determines that the audio settings of the media output device **102** are not to be adjusted (block **410**: NO), the process continues to block **414**. If the example audio settings adjuster **216** determines that the audio settings of the media output device **102** are to be adjusted (block **410**: YES), the example audio settings adjuster **216** determines a media output device setting adjustment based on the classified audio. For example, the example audio settings adjuster **216** may select an audio equalizer setting based on one or more identified

instruments and/or an identified genre (e.g., from the timber or based on the identified instruments) (block **412**). At block **414**, the example device interface **210** outputs a report corresponding to the classification, identification, and/or media output device setting adjustment. In some examples the device interface **210** outputs the report to another device for further processing/analysis. In some examples, the device interface **210** outputs the report to the example audio analyzer **100** to display the results to a user via a user interface. In some examples, the device interface **210** outputs the report to the example media output device **102** to adjust the audio settings of the media output device **102**.

[0042] If the example timber processor **212** determines that a match is not determined (block **406**: NO), the example device interface **210** prompts for additional information corresponding to the audio signal (block **416**). For example, the device interface **210** may transmit instructions to the example audio analyzer **100** to (A) prompt a user to provide information corresponding to the audio or (B) prompt the audio analyzer **100** to reply with the full audio signal. At block **418**, the example timber database **214** stores the measured timber-less pitch log-spectrum in conjunction with corresponding data that may have been received.

[0043] FIG. 5 illustrates an example FT of the log-spectrum **500** of an audio signal, an example timber-less pitch log-spectrum **502** of the audio signal, and an example pitch-less timber log-spectrum **504** of the audio signal.

[0044] As described in conjunction with FIG. 2, when the example audio analyzer **100** receives the example media signal **106** (e.g., or samples of a media signal), the example audio analyzer **100** determines the example log-spectrum of the audio signal/samples (e.g., if the media samples correspond to a video signal, the audio analyzer **100** extracts the audio component). Additionally, the example audio analyzer **100** determines the FT of the log-spectrum. The example FT log-spectrum **500** of FIG. 5 corresponds to an example transform output of the log-spectrum of the audio signal/samples. The example timber-less pitch log-spectrum **502** corresponds to inverse FT of the complex argument of the example FT of log-spectrum **500** (e.g.,  $P=F^{-1}(e^{j \arg(F(X))})$ ) and the pitch-less timber log-spectrum **504** corresponds to the inverse FT of the magnitude of the example FT of the log-spectrum **500** (e.g.,  $T=F^{-1}(|F(X)|)$ ). As illustrated in FIG. 5, the example FT of the log-spectrum **500** corresponds to a convolution of the example timber-less pitch log-spectrum **502** and the example pitch-less timber log-spectrum **504**. The convolution with the peak of the example pitch log-spectrum **502** adds the offset.

[0045] FIG. 6 is a block diagram of an example processor platform **600** structured to execute the instructions of FIG. 3 to implement the audio analyzer **100** of FIG. 2. The processor platform **600** can be, for example, a server, a personal computer, a workstation, a self-learning machine (e.g., a neural network), a mobile device (e.g., a cell phone, a smart phone, a tablet such as an iPad™), a personal digital assistant (PDA), an Internet appliance, a DVD player, a CD player, a digital video recorder, a Blu-ray player, a gaming console, a personal video recorder, a set top box, a headset or other wearable device, or any other type of computing device.

[0046] The processor platform **600** of the illustrated example includes a processor **612**. The processor **612** of the illustrated example is hardware. For example, the processor **612** can be implemented by one or more integrated circuits,

logic circuits, microprocessors, GPUs, DSPs, or controllers from any desired family or manufacturer. The hardware processor may be a semiconductor based (e.g., silicon based) device. In this example, the processor implements the example media interface **200**, the example audio extractor **202**, the example audio characteristic extractor **204**, and/or the example device interface of FIG. 2.

[0047] The processor **612** of the illustrated example includes a local memory **613** (e.g., a cache). The processor **612** of the illustrated example is in communication with a main memory including a volatile memory **614** and a non-volatile memory **616** via a bus **618**. The volatile memory **614** may be implemented by Synchronous Dynamic Random Access Memory (SDRAM), Dynamic Random Access Memory (DRAM), RAMBUS® Dynamic Random Access Memory (RDRAM®) and/or any other type of random access memory device. The non-volatile memory **616** may be implemented by flash memory and/or any other desired type of memory device. Access to the main memory **614**, **616** is controlled by a memory controller.

[0048] The processor platform **600** of the illustrated example also includes an interface circuit **620**. The interface circuit **620** may be implemented by any type of interface standard, such as an Ethernet interface, a universal serial bus (USB), a Bluetooth® interface, a near field communication (NFC) interface, and/or a PCI express interface.

[0049] In the illustrated example, one or more input devices **622** are connected to the interface circuit **620**. The input device(s) **622** permit(s) a user to enter data and/or commands into the processor **612**. The input device(s) can be implemented by, for example, an audio sensor, a microphone, a camera (still or video), a keyboard, a button, a mouse, a touchscreen, a track-pad, a trackball, isopoint and/or a voice recognition system.

[0050] One or more output devices **624** are also connected to the interface circuit **620** of the illustrated example. The output devices **624** can be implemented, for example, by display devices (e.g., a light emitting diode (LED), an organic light emitting diode (OLED), a liquid crystal display (LCD), a cathode ray tube display (CRT), an in-place switching (IPS) display, a touchscreen, etc.), a tactile output device, a printer and/or speaker. The interface circuit **620** of the illustrated example, thus, typically includes a graphics driver card, a graphics driver chip and/or a graphics driver processor.

[0051] The interface circuit **620** of the illustrated example also includes a communication device such as a transmitter, a receiver, a transceiver, a modem, a residential gateway, a wireless access point, and/or a network interface to facilitate exchange of data with external machines (e.g., computing devices of any kind) via a network **626**. The communication can be via, for example, an Ethernet connection, a digital subscriber line (DSL) connection, a telephone line connection, a coaxial cable system, a satellite system, a line-of-site wireless system, a cellular telephone system, etc.

[0052] The processor platform **600** of the illustrated example also includes one or more mass storage devices **628** for storing software and/or data. Examples of such mass storage devices **628** include floppy disk drives, hard drive disks, compact disk drives, Blu-ray disk drives, redundant array of independent disks (RAID) systems, and digital versatile disk (DVD) drives.

[0053] The machine executable instructions **632** of FIG. 3 may be stored in the mass storage device **628**, in the volatile

memory **614**, in the non-volatile memory **616**, and/or on a removable non-transitory computer readable storage medium such as a CD or DVD.

[0054] FIG. 7 is a block diagram of an example processor platform **700** structured to execute the instructions of FIG. 4 to implement the audio determiner **108** of FIG. 2. The processor platform **700** can be, for example, a server, a personal computer, a workstation, a self-learning machine (e.g., a neural network), a mobile device (e.g., a cell phone, a smart phone, a tablet such as an iPad™), a personal digital assistant (PDA), an Internet appliance, a DVD player, a CD player, a digital video recorder, a Blu-ray player, a gaming console, a personal video recorder, a set top box, a headset or other wearable device, or any other type of computing device.

[0055] The processor platform **700** of the illustrated example includes a processor **712**. The processor **712** of the illustrated example is hardware. For example, the processor **712** can be implemented by one or more integrated circuits, logic circuits, microprocessors, GPUs, DSPs, or controllers from any desired family or manufacturer. The hardware processor may be a semiconductor based (e.g., silicon based) device. In this example, the processor implements the example device interface **210**, the example timbre processor **212**, the example timbre database **214**, and/or the example audio settings adjuster **216**.

[0056] The processor **712** of the illustrated example includes a local memory **713** (e.g., a cache). The processor **712** of the illustrated example is in communication with a main memory including a volatile memory **714** and a non-volatile memory **716** via a bus **718**. The volatile memory **714** may be implemented by Synchronous Dynamic Random Access Memory (SDRAM), Dynamic Random Access Memory (DRAM), RAMBUS® Dynamic Random Access Memory (RDRAM®) and/or any other type of random access memory device. The non-volatile memory **716** may be implemented by flash memory and/or any other desired type of memory device. Access to the main memory **714**, **716** is controlled by a memory controller.

[0057] The processor platform **700** of the illustrated example also includes an interface circuit **720**. The interface circuit **720** may be implemented by any type of interface standard, such as an Ethernet interface, a universal serial bus (USB), a Bluetooth® interface, a near field communication (NFC) interface, and/or a PCI express interface.

[0058] In the illustrated example, one or more input devices **722** are connected to the interface circuit **720**. The input device(s) **722** permit(s) a user to enter data and/or commands into the processor **712**. The input device(s) can be implemented by, for example, an audio sensor, a microphone, a camera (still or video), a keyboard, a button, a mouse, a touchscreen, a track-pad, a trackball, isopoint and/or a voice recognition system.

[0059] One or more output devices **724** are also connected to the interface circuit **720** of the illustrated example. The output devices **724** can be implemented, for example, by display devices (e.g., a light emitting diode (LED), an organic light emitting diode (OLED), a liquid crystal display (LCD), a cathode ray tube display (CRT), an in-place switching (IPS) display, a touchscreen, etc.), a tactile output device, a printer and/or speaker. The interface circuit **720** of the illustrated example, thus, typically includes a graphics driver card, a graphics driver chip and/or a graphics driver processor.

**[0060]** The interface circuit **720** of the illustrated example also includes a communication device such as a transmitter, a receiver, a transceiver, a modem, a residential gateway, a wireless access point, and/or a network interface to facilitate exchange of data with external machines (e.g., computing devices of any kind) via a network **726**. The communication can be via, for example, an Ethernet connection, a digital subscriber line (DSL) connection, a telephone line connection, a coaxial cable system, a satellite system, a line-of-site wireless system, a cellular telephone system, etc.

**[0061]** The processor platform **700** of the illustrated example also includes one or more mass storage devices **728** for storing software and/or data. Examples of such mass storage devices **728** include floppy disk drives, hard drive disks, compact disk drives, Blu-ray disk drives, redundant array of independent disks (RAID) systems, and digital versatile disk (DVD) drives.

**[0062]** The machine executable instructions **732** of FIG. **4** may be stored in the mass storage device **728**, in the volatile memory **714**, in the non-volatile memory **716**, and/or on a removable non-transitory computer readable storage medium such as a CD or DVD.

**[0063]** From the foregoing, it would be appreciated that the above disclosed method, apparatus, and articles of manufacture extract a pitch-independent timbre attribute from a media signal. Examples disclosed herein determine a pitch-less independent timbre log-spectrum based on audio received directly or indirectly from a media output device. Example disclosed herein further include classifying the audio (e.g., identifying an instrument) based on the timbre and/or identifying a media source (e.g., a song, a video game, an advertisement, etc.) of the audio based on the timbre. Using examples disclosed herein, timbre can be used to classify and/or identify audio with significantly less resources than conventional techniques because the extract timbre is pitch-independent. Accordingly, audio may be classified and/or identified without the need to multiple reference timbre attributes for multiple pitches. Rather, a pitch-independent timbre may be used to classify audio regardless of the pitch.

**[0064]** Although certain example methods, apparatus and articles of manufacture have been described herein, other implementations are possible. The scope of coverage of this patent is not limited thereto. On the contrary, this patent covers all methods, apparatus and articles of manufacture fairly falling within the scope of the claims of this patent.

What is claimed is:

1. An apparatus comprising:  
an audio characteristic extractor to:  
determine a logarithmic spectrum of an audio signal;  
transform the logarithmic spectrum of the audio signal into a frequency domain to generate a transform output;  
determine a magnitude of the transform output; and  
determine a timbre attribute of the audio signal based on an inverse transform of the magnitude.
2. The apparatus of claim 1, wherein the audio signal is part of a media signal.
3. The apparatus of claim 1, wherein the audio signal is an audio component of a video signal, further including an audio extractor to extract the audio signal from the video signal.

4. The apparatus of claim 1, wherein the audio characteristic extractor is to determine the logarithmic spectrum of the audio signal using a constant Q transform.

5. The apparatus of claim 1, wherein the audio characteristic extractor is to determine the transform of the logarithmic spectrum using a Fourier transform and determine the inverse transform using an inverse Fourier transform.

6. The apparatus of claim 1, wherein the audio characteristic extractor is to determine a timbre-independent pitch attribute of the audio signal based on an inverse transform of a complex argument of the transform of the logarithmic spectrum.

7. The apparatus of claim 1, further including an interface to:

transmit the timbre attribute to a processing device; and  
in response to transmitting the timbre attribute to the processing device, receive at least one of a classification of the audio signal or an identifier corresponding to a media signal corresponding to the audio signal from the processing device.

8. The apparatus of claim 7, wherein the interface is to transmit the at least one of the classification of the audio signal or the identifier corresponding to the media signal to a user interface.

9. The apparatus of claim 1, further including a microphone to receive the audio signal via ambient audio.

10. The apparatus of claim 1, wherein the audio signal corresponds to a media signal to be output by a media output device.

11. The apparatus of claim 1, further including an interface to receive the audio signal from a microphone.

12. A non-transitory computer readable storage medium comprising instructions which, when executed, cause a one or more processors to at least:

determine a logarithmic spectrum of an audio signal;  
transform the logarithmic spectrum of the audio signal into a frequency domain to generate a transform output;  
determine a magnitude of the transform output; and  
determine a timbre attribute of the audio signal based on an inverse transform of the magnitude.

13. The computer readable storage medium of claim 12, wherein the audio signal is part of a media signal.

14. The computer readable storage medium of claim 12, wherein the audio signal is an audio component of a video signal, wherein the instructions when executed cause the one or more processors to extract the audio signal from the video signal.

15. The computer readable storage medium of claim 12, wherein the instructions when executed cause the one or more processors to determine the logarithmic spectrum of the audio signal using a constant Q transform.

16. The computer readable storage medium of claim 12, wherein the instructions when executed cause the one or more processors to determine the transform of the logarithmic spectrum using a Fourier transform and determine the inverse transform using an inverse Fourier transform.

17. The computer readable storage medium of claim 12, wherein the instructions when executed cause the one or more processors to determine a timbre-independent pitch attribute of the audio signal based on an inverse transform of a complex argument of the transform of the logarithmic spectrum.



**18.** The computer readable storage medium of claim **12**, wherein the instructions when executed cause the one or more processors to:

transmit the timbre attribute to a processing device; and in response to transmitting the timbre attribute to the processing device, receive at least one of a classification of the audio signal or an identifier corresponding to a media signal corresponding to the audio signal from the processing device.

**19.** The computer readable storage medium of claim **18**, wherein the instructions when executed cause the one or more processors to transmit the at least one of the classification of the audio signal or the identifier corresponding to the media signal to a user interface.

**20.** An apparatus comprising:

means for determining a timbre attribute of an audio signal, the means for determining to:

determine a logarithmic spectrum of the audio signal;  
transform the logarithmic spectrum of the audio signal into a frequency domain to generate a transform output;

determine a magnitude of the transform output; and  
determine the timbre attribute of the audio signal based on an inverse transform of the magnitude.

\* \* \* \* \*