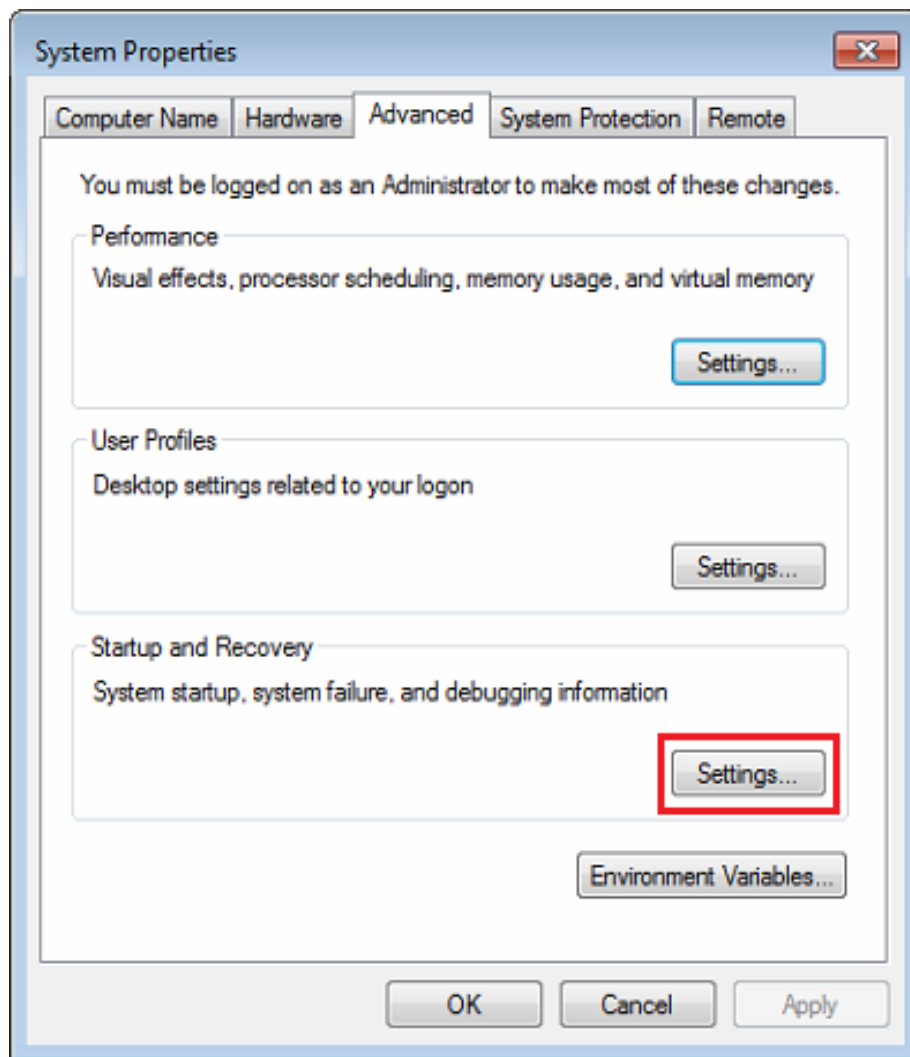


## How can I generate memory dumps in case of bluescreens?

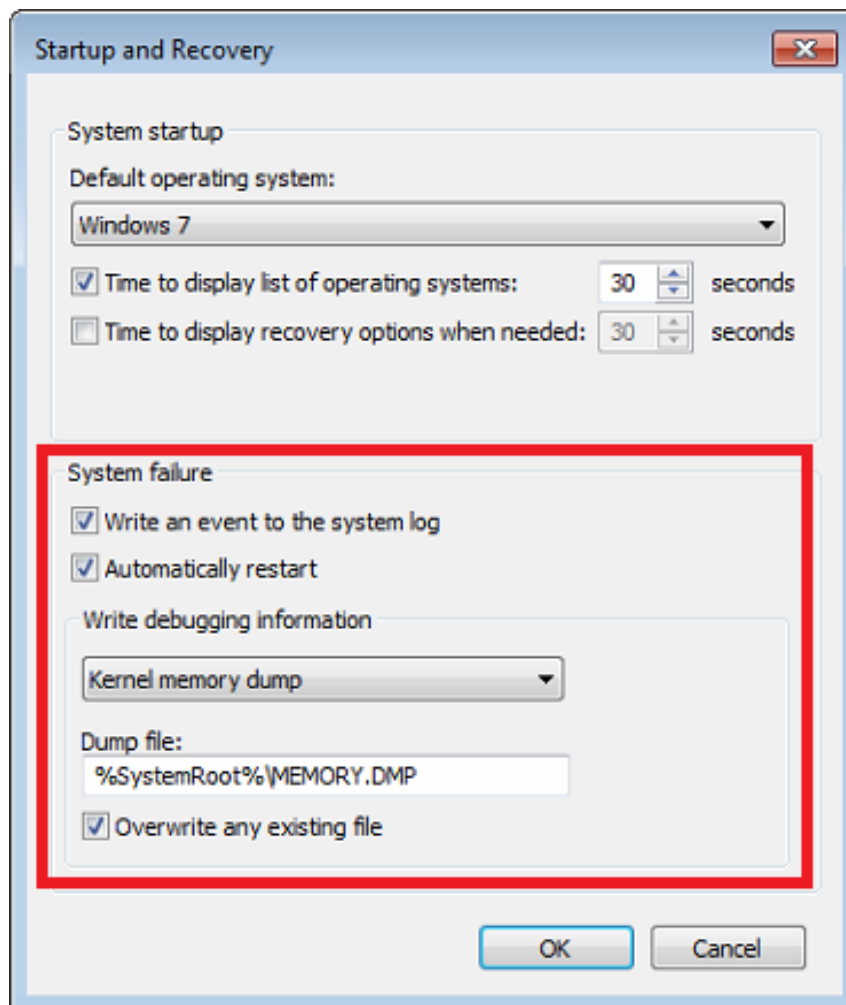
mvBlueFOX, mvBlueFOX3, mvBlueCOUGAR, mvTITAN, mvGAMMA, mvVirtualDevice,  
mvHYPERION, mvIMPACT Acquire

In some cases, it is possible that a bluescreen is generated for unknown reasons. To clarify the root cause for them it is necessary to have a look at the memory dumps from the moment when the blue screen is generated. By default the possibility to generate a memory dump after a blue screen is not enabled. You can enable this like the following way.

1. Open the **Control Panel**.
2. Open Menu **System**.
3. Select "**Advanced System Settings**" from the left pane.



4. Click "**Settings...**" (as marked in the previous image).
5. Adapt your settings to make them similar to the following:



6. Afterwards, confirm the changes via **"Ok"**.