



Ultrasonics.Steam.Ultraclean.



Healthcare

## Elmasteam 8 med

Powerful cleaning in the CSSD

- Long steam availability with 8 bar steam pressure
- Individually adjustable pressure ranges "soft" and "strong"
- Automatic "Eco-mode" saves costs and energy
- Run-dry-save heating and intelligent decalcification cycles
- Luer-Lock-connection for perfectly cleaning of hollow body instruments

# Elmasteam 8 med

## Removes easily and gently even tenacious soiling

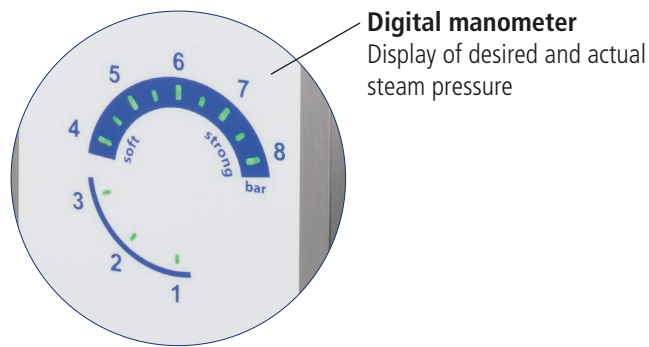
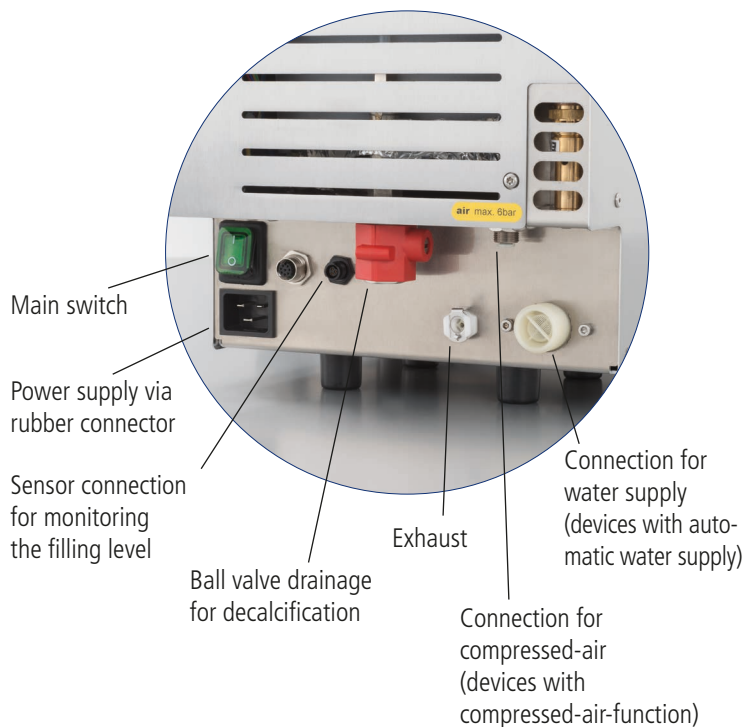
Certain instruments, such as burs, drills and electro-surgical instruments, often do not become sufficiently clean in the standard washing and disinfecting unit.

The Elmasteam 8 med steam jet cleaner is the ideal tool to pre-clean such instruments and smoothly removes even tenacious contaminations like burnt-in tissue on electro-surgical forceps. So the valuable instruments are preserved for longer time.

The insides of hollow body instruments can be connectec directly to the Luer-Lock-connection at the handpiece or can be cleaned with the optionally available adapter set.

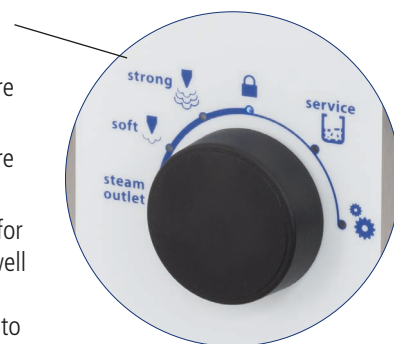


## Connections on the rear



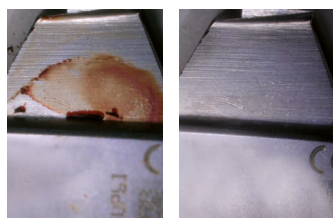
## Multi-function switch

- "Strong" cleaning mode with 6-8 bar steam pressure
- "Soft" cleaning mode with 4-6 bar steam pressure
- Adjustment of water hardness and chlorine content for decalcification in time as well as adjustment of the time until the steamer switches to Eco-mode



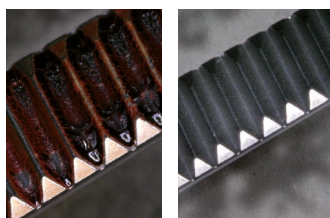
## Application examples before and after cleaning

Hemostatic forceps



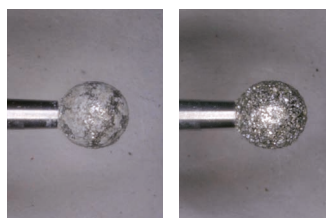
Removal of blood

Dissecting forceps



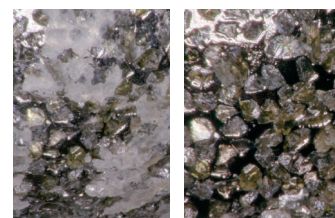
Removal of blood

Diamond burr



Removal of bone meal

Diamond burr - Detail



Anwendungsbilder ©www.mittelohr.de



Ultrasonics.Steam.Ultraclean.

# Elmasteam 8 med

## Great performance – tailor-cut technology

The high performance of the Elmasteam 8 med is due to the optimised piping system with larger cross sections, the intelligent pump control, the increased heating power (60% more) as well as the optimised heating position.

The intelligent control system of the Elmasteam 8 med calculates, by means of preset water hardness and the intensity and frequency of use, the proper time for decalcification. The user is led step by step through the decalcification process.

Due to this integrated decalcification programme and the protection against dry running of the heating, the Elmasteam 8 med is highly reliable and fit for use for a long time. By taking these measures and provided that the unit is being operated properly and in one-shift operation, the usual warranty can be extended to 3 years.

### Simple filling with DI-water

via the integrated funnel  
(devices optionally also  
with integrated, automatic  
water filling)

### Clearly arranged filling level and service display

Constant and easy control  
of the operating status

### Flexible handpiece

with 2 integrated functions:

- steam or
- compressed air for drying  
wet parts

(optional, if compressed-air function  
is integrated and connected)

### Settings and operation modes

- Steam outlet:  
Release of remaining pressure
- "Soft-" and "Strong"-modes:  
Individually adjustable pressure modes
- Lock-mode:  
Deactivates the handpiece and  
the foot pedal during breaks
- Service-modes:  
Integrated decalcification programme,  
energy-saving Eco-mode, etc.

Variable tube length  
with 1,3 or 2,3 m



More about Elmasteam 8 med.



Ultrasonics.Steam.Ultraclean.

# Elmasteam 8 med

With thought-out accessories for perfect cleaning results



## Technical Data

Mains voltage (V)	220 - 240	Pressure tank volume (litres)	5.0
Mains frequency (Hz)	50 / 60	Max. filling volume (litres)	3.8
Max. power consumption (W)	3120	Dimensions W/D/H (mm)	285 / 350 / 520
Steam temperature in the tank (°C)	185	Weight empty (kg)	20.0
Steam temperature at the nozzle (°C)	160	Registered as medical device	class 1
Operating pressure (bar)	8.0		

The scope of delivery includes:



Particle filter · Tweezers · Maintenance hose · Rinsing set · Extra tank cap · Universal top for handpiece

Further accessories and optional unit functions:



Steam absorber



Adapter set  
consisting of 8 parts  
incl. pliers for changing the adapters



Compressed-air  
(optional function)



Canister  
with level indicator

\*3 years warranty for proper use in accordance with the operating manual. Wear parts are not covered by the warranty.